



# LUMINAIRE TESTING LABORATORY, INC.

SUSTAINING MEMBER  
of the  
IESNA

905 Harrison Street · Allentown, PA 18103 · 610-770-1044 · Fax 610-770-8912 · www.LuminaireTesting.com

LTL NUMBER: 08685

DATE: 02-07-2005

PREPARED FOR: PRECISION ARCHITECTURAL LIGHTING

CATALOG NUMBER: LMSI/D03-PH-LI/PB-T8

LUMINAIRE: EXTRUDED ALUMINUM HOUSING WITH PERFORATED SECTIONS AND TRANSLUCENT WHITE ACRYLIC INSERTS, FORMED SPECULAR ALUMINUM REFLECTORS, 15 CELL, 1-3/8" DEEP, FORMED SEMI-SPECULAR ALUMINUM LOUVER, FORMED SPECULAR ALUMINUM UPPER REFLECTOR SURROUNDING MIDDLE LAMP.

LAMPS: THREE HORIZONTAL 32 WATT T8 LINEAR FLUORESCENT LAMPS RATED AT 2850 LUMENS EACH.

LAMP CATALOG NUMBER: PHILIPS F32T8/TL841/ALTO

BALLAST: ONE ADVANCE REL-3P32-SC

MOUNTING: PENDANT

LUMEN TO CANDELA RATIO USED = 9.18

TOTAL INPUT WATTS = 86.3 AT 120.0 VOLTS

THE 0 DEGREE PLANE IS PARALLEL WITH THE LAMPS.

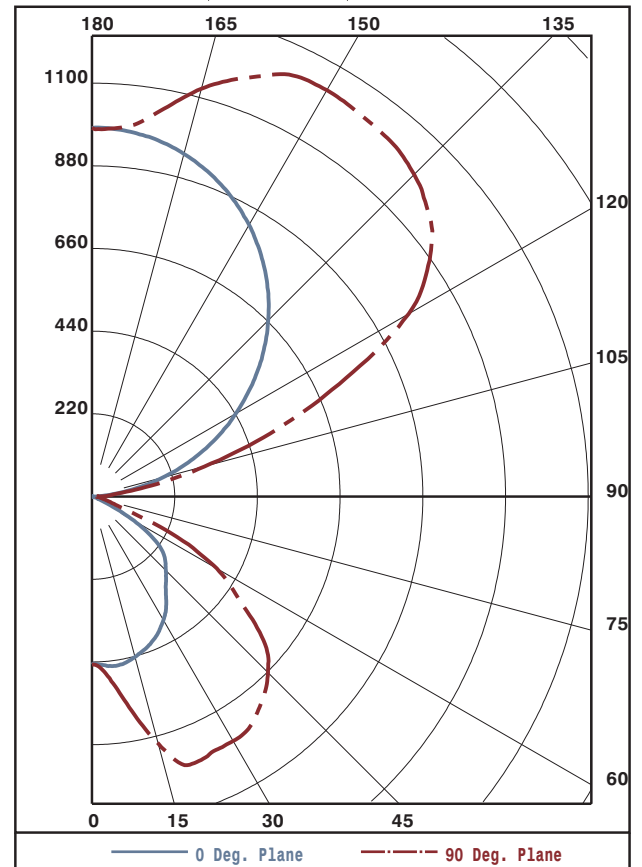
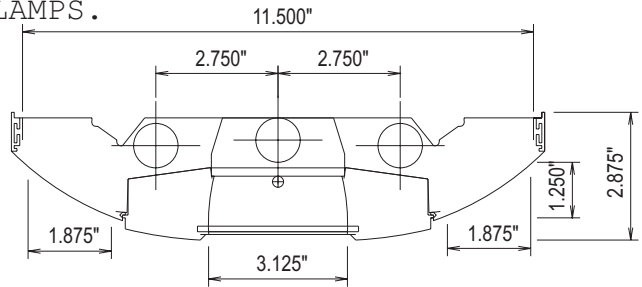
#08685

### CANDELA DISTRIBUTION

	0.0	22.5	45.0	67.5	90.0
0	447	447	447	447	447
5	452	460	470	476	479
15	441	496	598	663	680
25	407	542	705	744	752
35	344	556	656	715	740
45	278	490	575	630	662
55	207	367	429	460	477
65	47	96	155	206	235
75	8	14	24	36	41
85	0	5	10	15	18
90	0	3	7	10	13
95	35	66	46	49	52
105	193	397	374	326	309
115	363	593	770	767	746
125	520	757	952	1067	1097
135	663	878	1057	1173	1212
145	784	939	1131	1213	1242
155	879	958	1111	1206	1239
165	944	965	1038	1101	1123
175	978	979	984	986	988
180	980	980	980	980	980

### FLUX

46
165
296
386
417
355
151
28
11
69
357
662
800
781
673
501
294
94



### ZONAL LUMEN SUMMARY

ZONE	LUMENS	%LAMP	%FIXT
0- 30	507	5.9	8.3
0- 40	893	10.4	14.7
0- 60	1666	19.5	27.4
0- 90	1855	21.7	30.5
90-120	1088	12.7	17.9
90-130	1888	22.1	31.0
90-150	3342	39.1	54.9
90-180	4231	49.5	69.5
0-180	6086	71.2	100.0

TOTAL LUMINAIRE EFFICIENCY: 71.2%  
 CIE TYPE: SEMI-INDIRECT  
 PLANE: 0-DEG 90-DEG  
 SPACING CRITERIA: 1.3 2.0  
 SHIELDING ANGLES: 24 44

TESTED BY HERSCHEL SCHRECK  
 CHECKED BY MIKE GRATHER



LTL NUMBER: 08685

DATE: 02-07-2005

PREPARED FOR: PRECISION ARCHITECTURAL LIGHTING

COEFFICIENTS OF UTILIZATION - ZONAL CAVITY METHOD
EFFECTIVE FLOOR CAVITY REFLECTANCE 0.20

Table with columns RC, RW, and rows for angles 80, 70, 50, 30, 10, 0. Values range from 31 to 73.

PLANE: 0-DEG 90-DEG
LUMINOUS LENGTH: 46.750 11.625
HEIGHT OF SIDE: 0.000 1.250

LUMINANCE IN CANDELA PER SQUARE METER
Table with columns ANGLE IN DEG, AVERAGE 0-DEG, AVERAGE 45-DEG, AVERAGE 90-DEG. Values range from 0 to 2331.



LUMINAIRE TESTING LABORATORY, INC.

SUSTAINING MEMBER of the IESNA

905 Harrison Street · Allentown, PA 18103 · 610-770-1044 · Fax 610-770-8912 · www.LuminaireTesting.com

LTL NUMBER: 08685

DATE: 02-07-2005

PREPARED FOR: PRECISION ARCHITECTURAL LIGHTING

CANDELA DISTRIBUTION

Table with 6 columns of candela values for various angles from 0 to 180 degrees.

ZONAL LUMEN SUMMARY

Table with 2 columns showing lumen ranges and their corresponding total lumen values.

THIS TEST WAS CONDUCTED USING RELATIVE PHOTOMETRY TECHNIQUES ACCORDING TO STANDARD IESNA PROCEDURES. THE USER MUST THEREFORE USE CAUTION IN THE FOLLOWING SITUATIONS: 1) THIS TEST WAS PERFORMED USING A SPECIFIC BALLAST/LAMP COMBINATION. EXTRAPOLATION OF THESE DATA FOR OTHER BALLAST/LAMP COMBINATIONS MAY PRODUCE ERRONEOUS RESULTS. 2) ACCORDING TO IESNA PROCEDURES, THE BALLAST(S) AND LAMP(S) ARE PRESUMED TO PRODUCE 100% OF RATED OUTPUT. AN APPROPRIATE BALLAST FACTOR MUST BE APPLIED TO THE LUMEN OUTPUT RATINGS AND LUMINOUS INTENSITY VALUES GIVEN. 3) THIS TEST WAS CONDUCTED IN A CONTROLLED LABORATORY ENVIRONMENT WHERE THE AMBIENT TEMPERATURE WAS HELD AT 25°C ±1°C. FIELD PERFORMANCE MAY DIFFER PARTICULARLY IN REGARDS TO CHANGE IN LUMINOUS OUTPUT AS A RESULT OF DIFFERENCE IN AMBIENT TEMPERATURE AND METHOD OF MOUNTING THE LUMINAIRE.