



# LUMINAIRE TESTING LABORATORY, INC.

SUSTAINING  
MEMBER  
of the  
IESNA

905 Harrison Street · Allentown, PA 18103 · 610-770-1044 · Fax 610-770-8912 · www.LuminaireTesting.com

LTL NUMBER: 08683

DATE: 02-07-2005

PREPARED FOR: PRECISION ARCHITECTURAL LIGHTING

CATALOG NUMBER: LMSI/D03-PH-OP/PBW-T8

LUMINAIRE: EXTRUDED ALUMINUM HOUSING WITH PERFORATED SECTIONS AND TRANSLUCENT WHITE ACRYLIC INSERTS, FORMED SPECULAR ALUMINUM REFLECTORS, 15 CELL, 1-3/8" DEEP, FORMED WHITE ENAMEL ALUMINUM LOUVER, OPEN TOP.

LAMPS: THREE HORIZONTAL 32 WATT T8 LINEAR FLUORESCENT LAMPS RATED AT 2850 LUMENS EACH.

LAMP CATALOG NUMBER: PHILIPS F32T8/TL841/ALTO

BALLAST: ONE ADVANCE REL-3P32-SC

MOUNTING: PENDANT

LUMEN TO CANDELA RATIO USED = 9.18

TOTAL INPUT WATTS = 87.0 AT 120.0 VOLTS

THE 0 DEGREE PLANE IS PARALLEL WITH THE LAMPS.

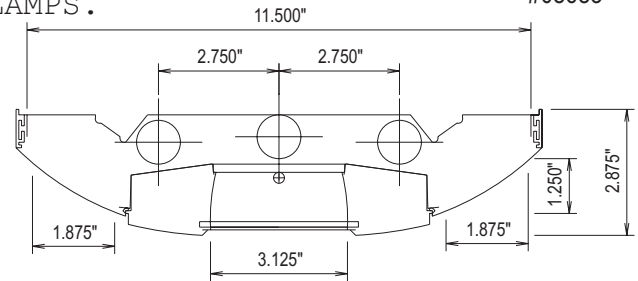
#08683

### CANDELA DISTRIBUTION

	0.0	22.5	45.0	67.5	90.0
0	425	425	425	425	425
5	420	423	426	425	426
15	391	400	418	433	441
25	345	363	403	448	469
35	289	318	374	334	320
45	224	267	238	179	154
55	155	185	126	153	187
65	86	94	117	138	139
75	40	46	57	65	68
85	11	13	18	22	24
90	2	5	9	13	15
95	59	188	192	178	173
105	291	598	735	781	784
115	532	816	1127	1235	1259
125	744	984	1291	1490	1548
135	932	1124	1388	1554	1615
145	1089	1226	1425	1564	1612
155	1213	1282	1420	1511	1548
165	1298	1315	1382	1435	1455
175	1344	1343	1348	1347	1347
180	1346	1346	1346	1346	1346

### FLUX

40
118
186
207
169
145
114
59
21
192
694
1007
1099
1033
873
647
390
129



### ZONAL LUMEN SUMMARY

ZONE	LUMENS	%LAMP	%FIXT
0- 30	344	4.0	4.8
0- 40	551	6.4	7.7
0- 60	865	10.1	12.1
0- 90	1059	12.4	14.9
90-120	1892	22.1	26.6
90-130	2991	35.0	42.0
90-150	4897	57.3	68.8
90-180	6063	70.9	85.1
0-180	7122	83.3	100.0

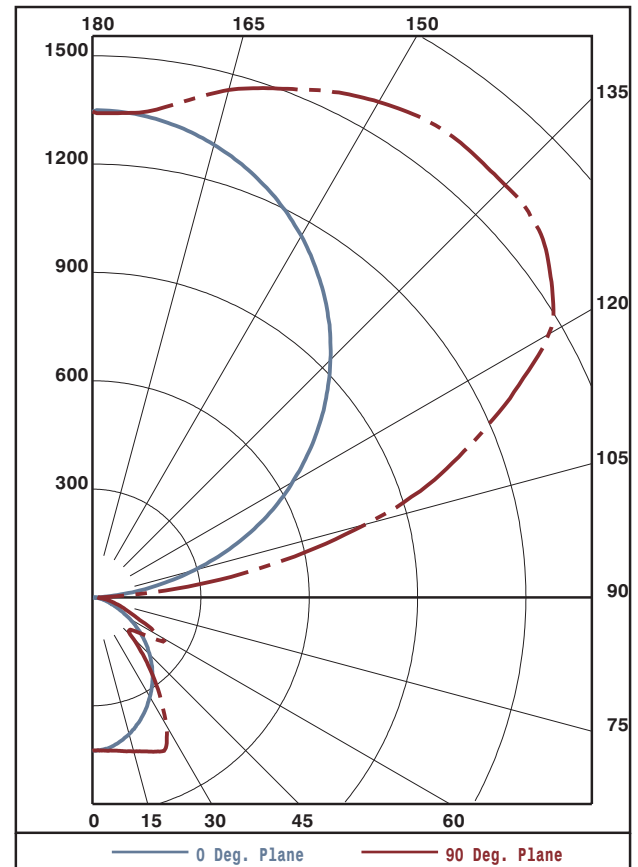
TOTAL LUMINAIRE EFFICIENCY: 83.3%

CIE TYPE: SEMI-INDIRECT

PLANE: 0-DEG 90-DEG

SPACING CRITERIA: 1.1 1.3

SHIELDING ANGLES: 24 30



TESTED BY HERSCHEL SCHRECK  
CHECKED BY MIKE GRATHER

**THIS REPORT BASED ON LM-41 AND OTHER PERTINENT IESNA PROCEDURES.**



LTL NUMBER: 08683

DATE: 02-07-2005

PREPARED FOR: PRECISION ARCHITECTURAL LIGHTING

COEFFICIENTS OF UTILIZATION - ZONAL CAVITY METHOD
EFFECTIVE FLOOR CAVITY REFLECTANCE 0.20

Table with columns RC, RW, and rows for angles 80, 70, 50, 30, 10, 0. Each cell contains four numerical values representing coefficients.

PLANE: 0-DEG 90-DEG
LUMINOUS LENGTH: 46.750 11.625
HEIGHT OF SIDE: 0.000 1.250

Table with columns ANGLE IN DEG, AVERAGE, and rows for angles 0, 45, 55, 65, 75, 85. Each cell contains three numerical values representing averages.



LUMINAIRE TESTING LABORATORY, INC.

SUSTAINING MEMBER of the IESNA

905 Harrison Street · Allentown, PA 18103 · 610-770-1044 · Fax 610-770-8912 · www.LuminaireTesting.com

LTL NUMBER: 08683

DATE: 02-07-2005

PREPARED FOR: PRECISION ARCHITECTURAL LIGHTING

CANDELA DISTRIBUTION

Table with 6 columns of candela values for various angles from 0.0 to 180 degrees.

ZONAL LUMEN SUMMARY

Table with 2 columns showing lumen ranges and their corresponding total lumen values.

THIS TEST WAS CONDUCTED USING RELATIVE PHOTOMETRY TECHNIQUES ACCORDING TO STANDARD IESNA PROCEDURES. THE USER MUST THEREFORE USE CAUTION IN THE FOLLOWING SITUATIONS: 1) THIS TEST WAS PERFORMED USING A SPECIFIC BALLAST/LAMP COMBINATION. EXTRAPOLATION OF THESE DATA FOR OTHER BALLAST/LAMP COMBINATIONS MAY PRODUCE ERRONEOUS RESULTS. 2) ACCORDING TO IESNA PROCEDURES, THE BALLAST(S) AND LAMP(S) ARE PRESUMED TO PRODUCE 100% OF RATED OUTPUT. AN APPROPRIATE BALLAST FACTOR MUST BE APPLIED TO THE LUMEN OUTPUT RATINGS AND LUMINOUS INTENSITY VALUES GIVEN. 3) THIS TEST WAS CONDUCTED IN A CONTROLLED LABORATORY ENVIRONMENT WHERE THE AMBIENT TEMPERATURE WAS HELD AT 25°C ±1°C. FIELD PERFORMANCE MAY DIFFER PARTICULARLY IN REGARDS TO CHANGE IN LUMINOUS OUTPUT AS A RESULT OF DIFFERENCE IN AMBIENT TEMPERATURE AND METHOD OF MOUNTING THE LUMINAIRE.