



LUMINAIRE TESTING LABORATORY, INC.

SUSTAINING
MEMBER
of the
IESNA

905 Harrison Street · Allentown, PA 18103 · 610-770-1044 · Fax 610-770-8912 · www.LuminaireTesting.com

LTL NUMBER: 08691

DATE: 02-10-2005

PREPARED FOR: PRECISION ARCHITECTURAL LIGHTING

CATALOG NUMBER: LMSI/D03-PH-OP/PBW-T5HO

LUMINAIRE: EXTRUDED ALUMINUM HOUSING WITH PERFORATED SECTIONS AND TRANSLUCENT WHITE ACRYLIC INSERTS, FORMED SPECULAR ALUMINUM REFLECTORS, 15 CELL, 1-3/8" DEEP, FORMED WHITE ENAMEL ALUMINUM LOUVER WITH TRANSLUCENT WHITE ACRYLIC OVERLAY, OPEN TOP.

LAMPS: THREE HORIZONTAL 54 WATT HIGH OUTPUT T5 LINEAR FLUORESCENT LAMPS RATED AT 4400 LUMENS EACH.

LAMP CATALOG NUMBER: PHILIPS F54T5/841/HO/ALTO

BALLASTS: TWO UNIVERSAL LIGHTING TECHNOLOGIES B254PUNV-D

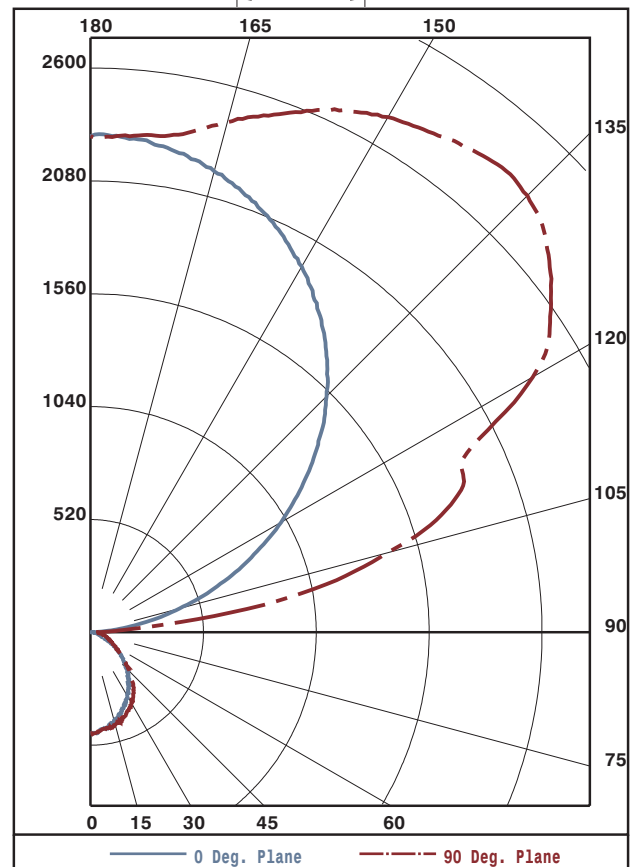
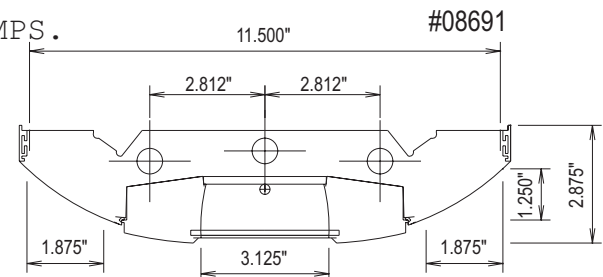
MOUNTING: PENDANT

LUMEN TO CANDELA RATIO USED = 9.18

TOTAL INPUT WATTS =176.5 AT 120.0 VOLTS

THE 0 DEGREE PLANE IS PARALLEL WITH THE LAMPS.

CANDELA DISTRIBUTION						FLUX
	0.0	22.5	45.0	67.5	90.0	
0	466	466	466	466	466	
5	459	461	461	456	458	43
15	418	428	430	434	440	122
25	365	371	382	394	400	177
35	305	315	318	333	344	202
45	229	243	246	248	254	190
55	156	166	164	159	166	148
65	77	88	97	100	107	95
75	39	51	53	68	72	61
85	14	15	20	32	35	27
90	0	15	20	22	32	
95	83	333	315	243	222	335
105	425	940	1234	1400	1415	1168
115	817	1366	1836	1877	1894	1612
125	1196	1641	2228	2503	2589	1850
135	1539	1875	2384	2738	2846	1774
145	1821	2033	2435	2700	2794	1488
155	2049	2134	2389	2586	2660	1094
165	2200	2231	2309	2399	2433	657
175	2283	2284	2297	2299	2297	219
180	2286	2286	2286	2286	2286	



ZONAL LUMEN SUMMARY			
ZONE	LUMENS	%LAMP	%FIXT
0- 30	343	2.6	3.0
0- 40	545	4.1	4.8
0- 60	883	6.7	7.8
0- 90	1066	8.1	9.5
90-120	3114	23.6	27.7
90-130	4964	37.6	44.1
90-150	8226	62.3	73.0
90-180	10196	77.2	90.5
0-180	11261	85.3	100.0

TOTAL LUMINAIRE EFFICIENCY: 85.3%
 CIE TYPE: INDIRECT
 PLANE: 0-DEG 90-DEG
 SPACING CRITERIA: 1.1 1.2

TESTED BY HERSCHEL SCHRECK
 CHECKED BY MIKE GRATHER



LUMINAIRE TESTING LABORATORY, INC.

SUSTAINING MEMBER of the IESNA

905 Harrison Street · Allentown, PA 18103 · 610-770-1044 · Fax 610-770-8912 · www.LuminaireTesting.com

LTL NUMBER: 08691

DATE: 02-10-2005

PREPARED FOR: PRECISION ARCHITECTURAL LIGHTING

COEFFICIENTS OF UTILIZATION - ZONAL CAVITY METHOD
EFFECTIVE FLOOR CAVITY REFLECTANCE 0.20

Table with 19 columns (RC, RW, 80, 70, 50, 30, 10, 0) and 11 rows (0-10) showing utilization coefficients.

PLANE: 0-DEG 90-DEG
LUMINOUS LENGTH: 46.750 11.625
HEIGHT OF SIDE: 0.000 1.250

Table with 4 columns (ANGLE IN DEG, AVERAGE 0-DEG, AVERAGE 45-DEG, AVERAGE 90-DEG) and 6 rows (0, 45, 55, 65, 75, 85) showing luminance values.



LUMINAIRE TESTING LABORATORY, INC.

SUSTAINING MEMBER of the IESNA

905 Harrison Street · Allentown, PA 18103 · 610-770-1044 · Fax 610-770-8912 · www.LuminaireTesting.com

LTL NUMBER: 08691

DATE: 02-10-2005

PREPARED FOR: PRECISION ARCHITECTURAL LIGHTING

CANDELA DISTRIBUTION

ZONAL LUMEN SUMMARY

Table with 6 columns for Candela values (0.0 to 180) and 1 column for Zonal Lumen Summary (0-5 to 175-180).

THIS TEST WAS CONDUCTED USING RELATIVE PHOTOMETRY TECHNIQUES ACCORDING TO STANDARD IESNA PROCEDURES. THE USER MUST THEREFORE USE CAUTION IN THE FOLLOWING SITUATIONS: 1) THIS TEST WAS PERFORMED USING A SPECIFIC BALLAST/LAMP COMBINATION. EXTRAPOLATION OF THESE DATA FOR OTHER BALLAST/LAMP COMBINATIONS MAY PRODUCE ERRONEOUS RESULTS. 2) ACCORDING TO IESNA PROCEDURES, THE BALLAST(S) AND LAMP(S) ARE PRESUMED TO PRODUCE 100% OF RATED OUTPUT. AN APPROPRIATE BALLAST FACTOR MUST BE APPLIED TO THE LUMEN OUTPUT RATINGS AND LUMINOUS INTENSITY VALUES GIVEN. 3) THIS TEST WAS CONDUCTED IN A CONTROLLED LABORATORY ENVIRONMENT WHERE THE AMBIENT TEMPERATURE WAS HELD AT 25°C ±1°C. FIELD PERFORMANCE MAY DIFFER PARTICULARLY IN REGARDS TO CHANGE IN LUMINOUS OUTPUT AS A RESULT OF DIFFERENCE IN AMBIENT TEMPERATURE AND METHOD OF MOUNTING THE LUMINAIRE.