



LUMINAIRE TESTING LABORATORY, INC.

SUSTAINING
MEMBER
of the
IESNA

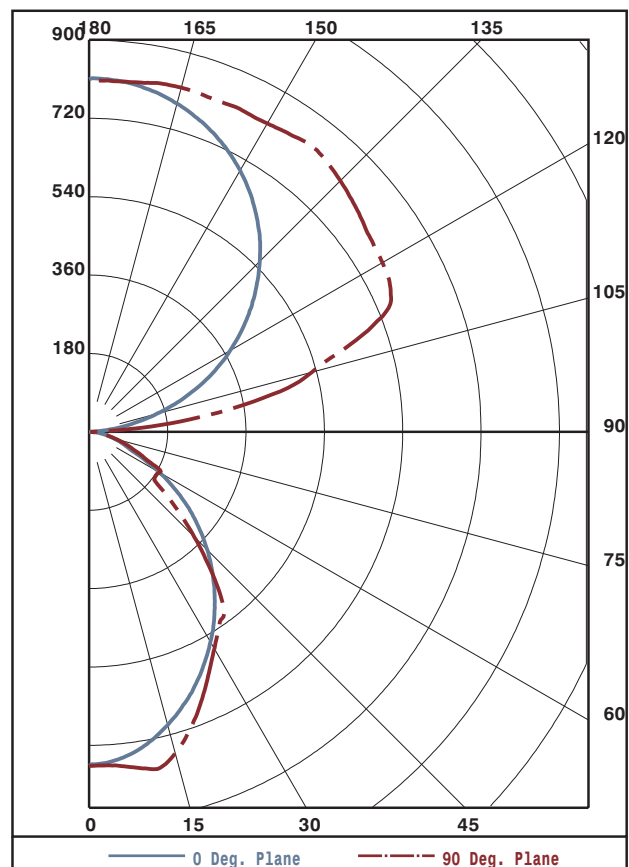
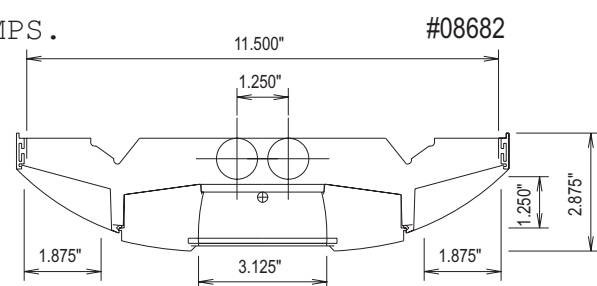
905 Harrison Street · Allentown, PA 18103 · 610-770-1044 · Fax 610-770-8912 · www.LuminaireTesting.com

LTL NUMBER: 08682
 PREPARED FOR: PRECISION ARCHITECTURAL LIGHTING
 CATALOG NUMBER: LMSI/D02-PH-OP/PBW-T8
 LUMINAIRE: EXTRUDED ALUMINUM HOUSING WITH PERFORATED SECTIONS AND TRANSLUCENT WHITE ACRYLIC INSERTS, TRANSLUCENT WHITE POLYCARBONATE SIDE SHIELDS, FORMED SPECULAR ALUMINUM REFLECTORS, 15 CELL, 1-3/8" DEEP, FORMED WHITE ENAMEL ALUMINUM LOUVER, OPEN TOP.
 LAMPS: TWO HORIZONTAL 32 WATT T8 LINEAR FLUORESCENT LAMPS RATED AT 2850 LUMENS EACH.
 LAMP CATALOG NUMBER: PHILIPS F32T8/TL841/ALTO
 BALLAST: ONE ADVANCE REL-2P32-SC
 MOUNTING: PENDANT

DATE: 02-07-2005

LUMEN TO CANDELA RATIO USED = 9.18
 TOTAL INPUT WATTS = 61.2 AT 120.0 VOLTS
 THE 0 DEGREE PLANE IS PARALLEL WITH THE LAMPS.

CANDELA DISTRIBUTION						FLUX
0.0	22.5	45.0	67.5	90.0		
0	767	767	767	767	767	73
5	755	759	766	767	770	208
15	697	714	755	763	764	293
25	609	647	645	634	637	322
35	502	532	503	507	527	287
45	384	394	383	353	342	201
55	255	257	224	179	184	131
65	121	130	123	139	138	66
75	59	60	63	65	66	16
85	15	14	13	12	12	4
90	0	2	3	4	4	141
95	32	136	150	148	144	435
105	162	313	479	508	530	560
115	308	433	584	714	764	568
125	437	514	659	750	785	540
135	554	606	713	791	816	466
145	652	685	746	802	826	359
155	728	746	780	806	818	226
165	781	785	803	814	818	77
175	808	806	809	808	808	
180	809	809	809	809	809	



ZONAL LUMEN ZONE	SUMMARY LUMENS	%LAMP	%FIXT
0- 30	575	10.1	11.6
0- 40	897	15.7	18.0
0- 60	1385	24.3	27.9
0- 90	1597	28.0	32.1
90-120	1136	19.9	22.9
90-130	1704	29.9	34.3
90-150	2711	47.6	54.5
90-180	3373	59.2	67.9
0-180	4971	87.2	100.0

TOTAL LUMINAIRE EFFICIENCY: 87.2%
 CIE TYPE: SEMI-INDIRECT
 PLANE: 0-DEG 90-DEG
 SPACING CRITERIA: 1.1 1.1
 SHIELDING ANGLES: 24 37

TESTED BY HERSCHEL SCHRECK
 CHECKED BY MIKE GRATHER



LUMINAIRE TESTING LABORATORY, INC.

SUSTAINING MEMBER of the IESNA

905 Harrison Street · Allentown, PA 18103 · 610-770-1044 · Fax 610-770-8912 · www.LuminaireTesting.com

LTL NUMBER: 08682

DATE: 02-07-2005

PREPARED FOR: PRECISION ARCHITECTURAL LIGHTING

COEFFICIENTS OF UTILIZATION - ZONAL CAVITY METHOD
EFFECTIVE FLOOR CAVITY REFLECTANCE 0.20

Table with columns RC, RW, and rows for angles 0-10 and reflectance values 80, 70, 50, 30, 10, 0.

PLANE: 0-DEG 90-DEG
LUMINOUS LENGTH: 46.750 11.625
HEIGHT OF SIDE: 0.000 1.250

LUMINANCE IN CANDELA PER SQUARE METER

Table with columns ANGLE IN DEG, AVERAGE 0-DEG, AVERAGE 45-DEG, AVERAGE 90-DEG.



LUMINAIRE TESTING LABORATORY, INC.

SUSTAINING MEMBER of the IESNA

905 Harrison Street · Allentown, PA 18103 · 610-770-1044 · Fax 610-770-8912 · www.LuminaireTesting.com

LTL NUMBER: 08682

DATE: 02-07-2005

PREPARED FOR: PRECISION ARCHITECTURAL LIGHTING

CANDELA DISTRIBUTION

Table with 6 columns of candela values for various angles from 0 to 180 degrees.

ZONAL LUMEN SUMMARY

Table with 2 columns showing lumen values for various zones from 0-5 to 175-180 degrees.

THIS TEST WAS CONDUCTED USING RELATIVE PHOTOMETRY TECHNIQUES ACCORDING TO STANDARD IESNA PROCEDURES. THE USER MUST THEREFORE USE CAUTION IN THE FOLLOWING SITUATIONS: 1) THIS TEST WAS PERFORMED USING A SPECIFIC BALLAST/LAMP COMBINATION. EXTRAPOLATION OF THESE DATA FOR OTHER BALLAST/LAMP COMBINATIONS MAY PRODUCE ERRONEOUS RESULTS. 2) ACCORDING TO IESNA PROCEDURES, THE BALLAST(S) AND LAMP(S) ARE PRESUMED TO PRODUCE 100% OF RATED OUTPUT. AN APPROPRIATE BALLAST FACTOR MUST BE APPLIED TO THE LUMEN OUTPUT RATINGS AND LUMINOUS INTENSITY VALUES GIVEN. 3) THIS TEST WAS CONDUCTED IN A CONTROLLED LABORATORY ENVIRONMENT WHERE THE AMBIENT TEMPERATURE WAS HELD AT 25°C ±1°C. FIELD PERFORMANCE MAY DIFFER PARTICULARLY IN REGARDS TO CHANGE IN LUMINOUS OUTPUT AS A RESULT OF DIFFERENCE IN AMBIENT TEMPERATURE AND METHOD OF MOUNTING THE LUMINAIRE.