



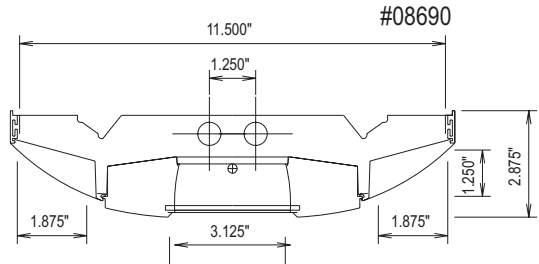
LUMINAIRE TESTING LABORATORY, INC.

SUSTAINING MEMBER of the IESNA

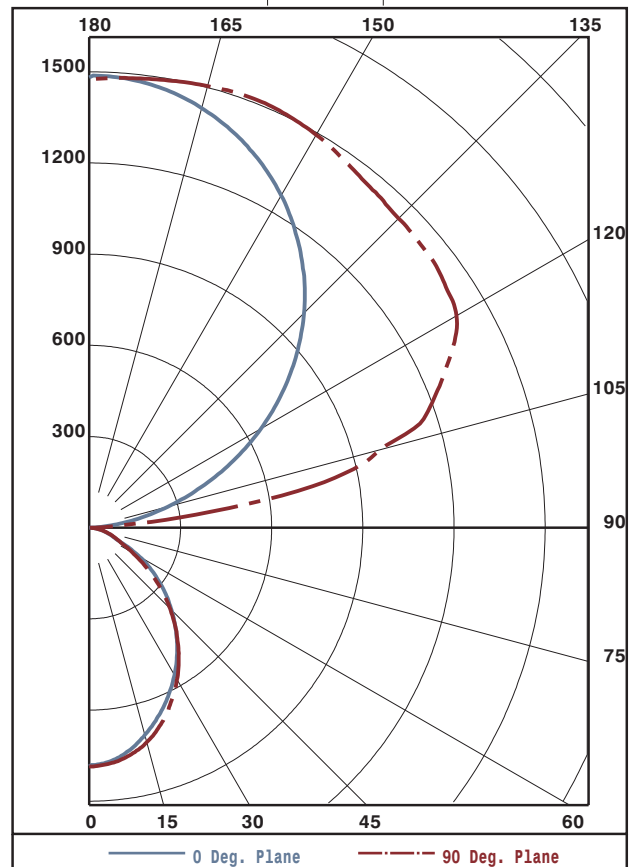
905 Harrison Street · Allentown, PA 18103 · 610-770-1044 · Fax 610-770-8912 · www.LuminaireTesting.com

LTL NUMBER: 08690 DATE: 02-08-2005
 PREPARED FOR: PRECISION ARCHITECTURAL LIGHTING
 CATALOG NUMBER: LMSI/D02-PH-OP/PBW-T5HO
 LUMINAIRE: EXTRUDED ALUMINUM HOUSING WITH PERFORATED SECTIONS AND TRANSLUCENT WHITE ACRYLIC INSERTS, TRANSLUCENT WHITE POLYCARBONATE SIDE SHIELDS, FORMED SPECULAR ALUMINUM REFLECTORS, 15 CELL, 1-3/8" DEEP, FORMED WHITE ENAMEL ALUMINUM LOUVER WITH TRANSLUCENT WHITE ACRYLIC OVERLAY, OPEN TOP.
 LAMPS: TWO HORIZONTAL 54 WATT HIGH OUTPUT T5 LINEAR FLUORESCENT LAMPS RATED AT 4400 LUMENS EACH.
 LAMP CATALOG NUMBER: PHILIPS F54T5/841/HO/ALTO
 BALLAST: ONE UNIVERSAL LIGHTING TECHNOLOGIES B254PUNV-D
 MOUNTING: PENDANT

LUMEN TO CANDELA RATIO USED = 9.18
 TOTAL INPUT WATTS = 117.9 AT 120.0 VOLTS
 THE 0 DEGREE PLANE IS PARALLEL WITH THE LAMPS.



CANDELA DISTRIBUTION						FLUX
	0.0	22.5	45.0	67.5	90.0	
0	785	785	785	785	785	
5	772	777	780	777	779	74
15	706	712	720	726	731	203
25	613	616	619	626	635	286
35	503	503	497	499	513	314
45	383	379	367	364	376	287
55	258	254	240	228	231	216
65	120	130	125	117	114	123
75	57	58	58	59	60	62
85	15	15	15	15	16	18
90	1	4	6	7	8	
95	55	245	228	177	162	234
105	268	559	826	968	991	788
115	524	727	1050	1247	1306	976
125	775	929	1150	1351	1421	1014
135	999	1113	1256	1385	1439	962
145	1184	1255	1367	1441	1470	845
155	1330	1368	1441	1490	1507	660
165	1429	1443	1475	1495	1505	416
175	1482	1478	1487	1485	1484	142
180	1482	1482	1482	1482	1482	



ZONAL LUMEN SUMMARY			
ZONE	LUMENS	%LAMP	%FIXT
0- 30	562	6.4	7.4
0- 40	876	10.0	11.5
0- 60	1379	15.7	18.1
0- 90	1582	18.0	20.8
90-120	1998	22.7	26.2
90-130	3012	34.2	39.5
90-150	4820	54.8	63.3
90-180	6038	68.6	79.2
0-180	7619	86.6	100.0

TOTAL LUMINAIRE EFFICIENCY: 86.6%
 CIE TYPE: SEMI-INDIRECT
 PLANE: 0-DEG 90-DEG
 SPACING CRITERIA: 1.1 1.1

TESTED BY HERSCHEL SCHRECK
 CHECKED BY MIKE GRATHER



LTL NUMBER: 08690

DATE: 02-08-2005

PREPARED FOR: PRECISION ARCHITECTURAL LIGHTING

COEFFICIENTS OF UTILIZATION - ZONAL CAVITY METHOD
EFFECTIVE FLOOR CAVITY REFLECTANCE 0.20

Table with columns RC, RW, and rows for angles 80, 70, 50, 30, 10, 0. Values range from 37 to 87.

PLANE: 0-DEG 90-DEG
LUMINOUS LENGTH: 46.750 11.625
HEIGHT OF SIDE: 0.000 1.250

Table with columns ANGLE IN DEG, AVERAGE, AVERAGE, AVERAGE. Values range from 321 to 4093.



LUMINAIRE TESTING LABORATORY, INC.

SUSTAINING MEMBER of the IESNA

905 Harrison Street · Allentown, PA 18103 · 610-770-1044 · Fax 610-770-8912 · www.LuminaireTesting.com

LTL NUMBER: 08690

DATE: 02-08-2005

PREPARED FOR: PRECISION ARCHITECTURAL LIGHTING

CANDELA DISTRIBUTION

Table with 6 columns of candela values for various angles from 0.0 to 180 degrees.

ZONAL LUMEN SUMMARY

Table with 2 columns: Zonal angle ranges and corresponding lumen values.

THIS TEST WAS CONDUCTED USING RELATIVE PHOTOMETRY TECHNIQUES ACCORDING TO STANDARD IESNA PROCEDURES. THE USER MUST THEREFORE USE CAUTION IN THE FOLLOWING SITUATIONS: 1) THIS TEST WAS PERFORMED USING A SPECIFIC BALLAST/LAMP COMBINATION. EXTRAPOLATION OF THESE DATA FOR OTHER BALLAST/LAMP COMBINATIONS MAY PRODUCE ERRONEOUS RESULTS. 2) ACCORDING TO IESNA PROCEDURES, THE BALLAST(S) AND LAMP(S) ARE PRESUMED TO PRODUCE 100% OF RATED OUTPUT. AN APPROPRIATE BALLAST FACTOR MUST BE APPLIED TO THE LUMEN OUTPUT RATINGS AND LUMINOUS INTENSITY VALUES GIVEN. 3) THIS TEST WAS CONDUCTED IN A CONTROLLED LABORATORY ENVIRONMENT WHERE THE AMBIENT TEMPERATURE WAS HELD AT 25°C ±1°C. FIELD PERFORMANCE MAY DIFFER PARTICULARLY IN REGARDS TO CHANGE IN LUMINOUS OUTPUT AS A RESULT OF DIFFERENCE IN AMBIENT TEMPERATURE AND METHOD OF MOUNTING THE LUMINAIRE.