



LTL NUMBER: 06551

DATE: 03-20-2002

PREPARED FOR: PRECISION ARCHITECTURAL LIGHTING

CATALOG NUMBER: LMSO3-SH-X-WR-4-X-X-120-T8

LUMINAIRE: EXTRUDED ALUMINUM HOUSING WITH FORMED STEEL ENDS, FORMED WHITE ENAMEL ALUMINUM REFLECTORS, OPEN TOP.

LAMPS: THREE PHILIPS F32T8/TL841 RATED AT 2850 LUMENS EACH.

BALLAST: ONE ADVANCE REL-3P32-SC

MOUNTING: PENDENT

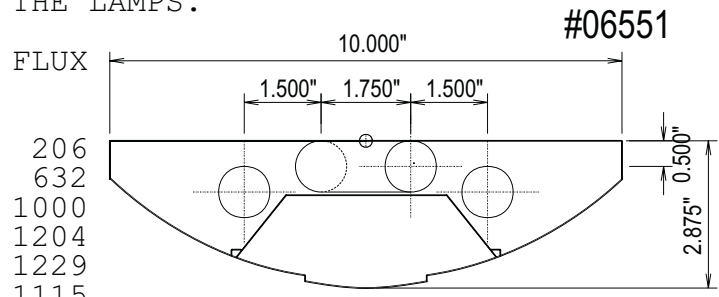
LUMEN TO CANDELA RATIO USED = 9.18

TOTAL INPUT WATTS = 86.4 AT 120.0 VOLTS

THE 0 DEGREE PLANE IS PARALLEL WITH THE LAMPS.

CANDELA DISTRIBUTION

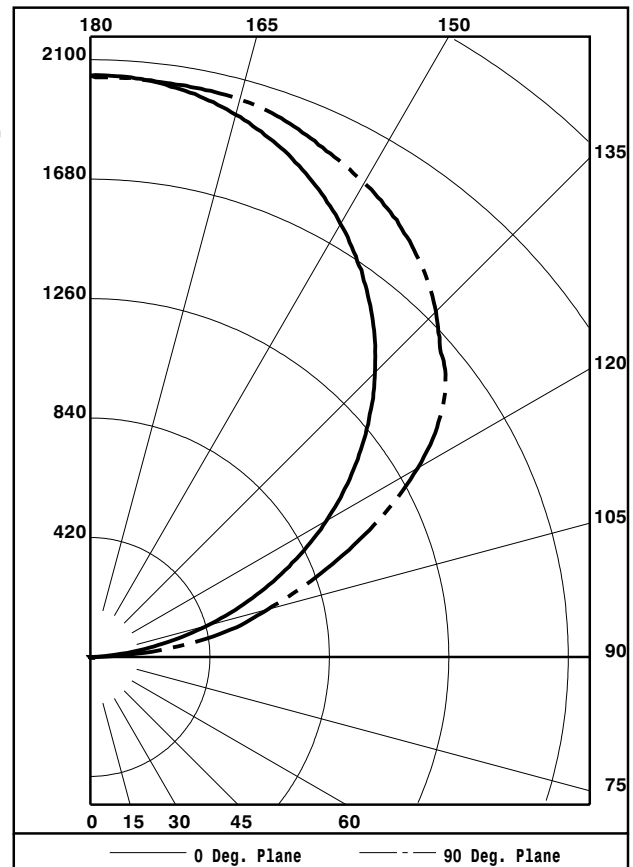
	0.0	22.5	45.0	67.5	90.0
90	0	4	5	5	6
95	88	178	209	215	216
105	425	593	627	638	645
115	781	920	1083	1104	1102
125	1120	1229	1369	1479	1507
135	1415	1494	1612	1690	1718
145	1661	1712	1790	1851	1877
155	1845	1870	1928	1954	1963
165	1973	1984	2010	2023	2030
175	2040	2037	2046	2041	2038
180	2044	2044	2044	2044	2044



ZONAL LUMEN SUMMARY

ZONE	LUMENS	%LAMP	%FIXT
0- 90	0	0.0	0.0
90-120	1838	21.5	26.1
90-130	3042	35.6	43.3
90-150	5385	63.0	76.6
90-180	7031	82.2	100.0
0-180	7031	82.2	100.0

TOTAL LUMINAIRE EFFICIENCY: 82.2%
 TOTAL REFLECTANCE OF PAINT: 91.2%
 CIE TYPE: INDIRECT



TESTED BY HERSCHEL SCHRECK
 CHECKED BY MIKE GRATHER



LTL NUMBER: 06551

DATE: 03-20-2002

PREPARED FOR: PRECISION ARCHITECTURAL LIGHTING

COEFFICIENTS OF UTILIZATION - ZONAL CAVITY METHOD
EFFECTIVE FLOOR CAVITY REFLECTANCE 0.20

Table with columns RC, RW, and rows for cavity heights 80, 70, 50, 30, 10, 0. Each row contains 18 numerical values representing utilization coefficients.

CANDELA DISTRIBUTION

Table with columns for candela values (0.0, 22.5, 45.0, 67.5, 90.0) and rows for beam angles (90, 95, 100, 105, 110, 115, 120, 125, 130, 135, 140, 145, 150, 155, 160, 165, 170, 175, 180).

ZONAL LUMEN SUMMARY

Table with columns for zonal lumen ranges (90-95, 95-100, 100-105, 105-110, 110-115, 115-120, 120-125, 125-130, 130-135, 135-140, 140-145, 145-150, 150-155, 155-160, 160-165, 165-170, 170-175, 175-180) and corresponding lumen values.

THIS TEST WAS CONDUCTED USING RELATIVE PHOTOMETRY TECHNIQUES ACCORDING TO STANDARD IESNA PROCEDURES. THE USER MUST THEREFORE USE CAUTION IN THE FOLLOWING SITUATIONS: 1) THIS TEST WAS PERFORMED USING A SPECIFIC BALLAST/LAMP COMBINATION. EXTRAPOLATION OF THESE DATA FOR OTHER BALLAST/LAMP COMBINATIONS MAY PRODUCE ERRONEOUS RESULTS. 2) ACCORDING TO IESNA PROCEDURES, THE BALLAST(S) AND LAMP(S) ARE PRESUMED TO PRODUCE 100% OF RATED OUTPUT. AN APPROPRIATE BALLAST FACTOR MUST BE APPLIED TO THE LUMEN OUTPUT RATINGS AND LUMINOUS INTENSITY VALUES GIVEN. 3) THIS TEST WAS CONDUCTED IN A CONTROLLED LABORATORY ENVIRONMENT WHERE THE AMBIENT TEMPERATURE WAS HELD AT 25°C ±1°C. FIELD PERFORMANCE MAY DIFFER PARTICULARLY IN REGARDS TO CHANGE IN LUMINOUS OUTPUT AS A RESULT OF DIFFERENCE IN AMBIENT TEMPERATURE AND METHOD OF MOUNTING THE LUMINAIRE.



LUMINAIRE TESTING LABORATORY, INC.



905 Harrison Street · Allentown, PA 18103 · (610) 770-1044 · Fax (610) 770-8912 · www.LuminaireTesting.com

INITIAL ILLUMINATION OF 50 FOOTCANDLES USING LTL TEST NUMBER 06551
 LUMINAIRE SUSPENSION LENGTH = 1.5
 WORKING PLANE HEIGHT = 2.50
 FLOOR REFLECTANCE = 20

ROOM HT	CEIL RF	8				9				10				12			
		80	70	80	70	80	70	80	70	80	70	80	70	80	70		
WALL RF		70	50	50	30	70	50	50	30	70	50	50	30	70	50	50	30
WIDTH	LENGTH																
10.	10.	2	2	2	2	2	2	2	2	2	2	2	3	2	3	3	3
10.	15.	2	2	3	3	2	2	3	3	2	3	3	3	3	3	4	4
15.	20.	3	4	4	4	3	4	4	5	4	4	5	5	4	5	5	6
15.	30.	5	5	6	6	5	5	6	7	5	6	6	7	5	6	7	8
20.	20.	4	4	5	5	4	5	5	6	4	5	6	6	5	6	6	7
20.	30.	6	6	7	8	6	6	7	8	6	7	8	9	7	8	9	10
20.	40.	7	8	9	10	8	8	10	10	8	9	10	11	8	10	11	12
20.	60.	11	11	13	14	11	12	14	15	11	12	14	15	12	13	16	17
30.	30.	8	9	10	10	8	9	10	11	9	9	11	12	9	10	12	13
30.	40.	11	11	13	13	11	11	13	14	11	12	14	15	12	13	15	16
30.	50.	13	14	16	16	13	14	16	17	14	14	17	18	14	16	18	20
30.	60.	15	16	19	19	16	17	19	20	16	17	20	21	17	18	21	23
60.	60.	29	30	35	36	30	31	36	37	30	32	37	38	31	33	38	40
60.	80.	38	39	46	47	39	40	47	48	39	41	48	50	41	43	50	52
60.	100.	48	49	57	58	48	50	58	60	49	51	59	61	50	53	61	64
100.	100.	78	79	93	94	79	80	94	96	79	82	95	98	81	84	98	101

QUANTITY OF LUMINAIRES