



LTL NUMBER: 06522

DATE: 02-20-2002

PREPARED FOR: PRECISION ARCHITECTURAL LIGHTING

CATALOG NUMBER: LMSO3-PH-X-WR-4-120-T8

LUMINAIRE: EXTRUDED ALUMINUM HOUSING WITH FORMED STEEL ENDS, FORMED WHITE ENAMEL ALUMINUM REFLECTOR, PERFORATED SECTIONS WITH TRANSLUCENT WHITE ACRYLIC INSERTS, OPEN TOP.

LAMPS: THREE PHILIPS F32T8/TL841 RATED AT 2850 LUMENS EACH.

BALLAST: ONE ADVANCE REL-3P32-SC

MOUNTING: PENDENT

LUMEN TO CANDELA RATIO USED = 9.18

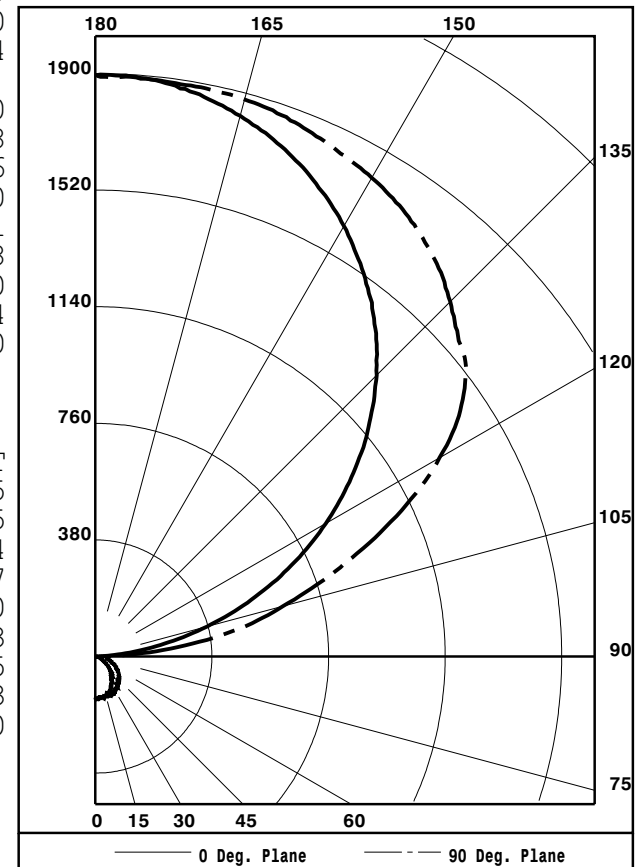
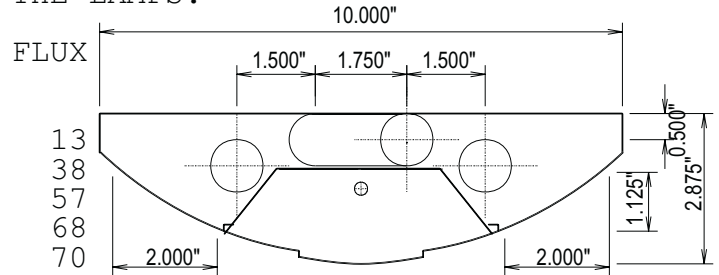
TOTAL INPUT WATTS = 86.1 AT 120.0 VOLTS

THE 0 DEGREE PLANE IS PARALLEL WITH THE LAMPS.

#06522

CANDELA DISTRIBUTION

	0.0	22.5	45.0	67.5	90.0
0	140	140	140	140	140
5	137	137	137	136	134
15	132	134	136	135	135
25	118	119	124	128	135
35	91	97	107	118	124
45	69	80	95	104	110
55	44	58	73	85	92
65	29	37	53	65	70
75	7	16	28	42	50
85	0	9	12	23	26
90	0	4	11	19	23
95	75	166	191	199	199
105	377	563	611	627	634
115	706	858	1044	1080	1083
125	1019	1138	1297	1429	1462
135	1297	1379	1511	1603	1636
145	1524	1577	1665	1736	1763
155	1701	1728	1784	1818	1832
165	1824	1832	1856	1872	1880
175	1890	1890	1894	1891	1890
180	1894	1894	1894	1894	1894



ZONAL LUMEN SUMMARY

ZONE	LUMENS	%LAMP	%FIXT
0- 30	107	1.3	1.5
0- 40	175	2.1	2.5
0- 60	309	3.6	4.4
0- 90	403	4.7	5.7
90-120	1755	20.5	25.0
90-130	2895	33.9	41.3
90-150	5083	59.5	72.5
90-180	6607	77.3	94.3
0-180	7010	82.0	100.0

TOTAL LUMINAIRE EFFICIENCY: 82.0%
 TOTAL REFLECTANCE OF PAINT: 91.3%
 CIE TYPE: INDIRECT
 PLANE: 0-DEG 90-DEG
 SPACING CRITERIA: 1.1 1.4

TESTED BY HERSCHEL SCHRECK
 CHECKED BY MIKE GRATHER



LUMINAIRE TESTING LABORATORY, INC.



905 Harrison Street · Allentown, PA 18103 · (610) 770-1044 · Fax (610) 770-8912 · www.LuminaireTesting.com

LTL NUMBER: 06522

DATE: 02-20-2002

PREPARED FOR: PRECISION ARCHITECTURAL LIGHTING

COEFFICIENTS OF UTILIZATION - ZONAL CAVITY METHOD
EFFECTIVE FLOOR CAVITY REFLECTANCE 0.20

Table with 18 columns (RC, RW, 80, 70, 50, 30, 10, 0) and 11 rows (0-10) showing utilization coefficients.

PLANE: 0-DEG 90-DEG
LUMINOUS LENGTH: 46.500 4.000
HEIGHT OF SIDE: 0.000 1.125

Table with 4 columns (ANGLE IN DEG, AVERAGE 0-DEG, AVERAGE 45-DEG, AVERAGE 90-DEG) and 6 rows (0, 45, 55, 65, 75, 85) showing luminance values.



LTL NUMBER: 06522

DATE: 02-20-2002

PREPARED FOR: PRECISION ARCHITECTURAL LIGHTING

CANDELA DISTRIBUTION

Table with 6 columns of candela values for angles 0.0, 22.5, 45.0, 67.5, 90.0, and 180 degrees.

ZONAL LUMEN SUMMARY

Table with 2 columns: Zonal angle ranges (e.g., 0-5, 5-10) and corresponding Lumen values.

THIS TEST WAS CONDUCTED USING RELATIVE PHOTOMETRY TECHNIQUES ACCORDING TO STANDARD IESNA PROCEDURES. THE USER MUST THEREFORE USE CAUTION IN THE FOLLOWING SITUATIONS: 1) THIS TEST WAS PERFORMED USING A SPECIFIC BALLAST/LAMP COMBINATION. EXTRAPOLATION OF THESE DATA FOR OTHER BALLAST/LAMP COMBINATIONS MAY PRODUCE ERRONEOUS RESULTS. 2) ACCORDING TO IESNA PROCEDURES, THE BALLAST(S) AND LAMP(S) ARE PRESUMED TO PRODUCE 100% OF RATED OUTPUT. AN APPROPRIATE BALLAST FACTOR MUST BE APPLIED TO THE LUMEN OUTPUT RATINGS AND LUMINOUS INTENSITY VALUES GIVEN. 3) THIS TEST WAS CONDUCTED IN A CONTROLLED LABORATORY ENVIRONMENT WHERE THE AMBIENT TEMPERATURE WAS HELD AT 25°C ±1°C. FIELD PERFORMANCE MAY DIFFER PARTICULARLY IN REGARDS TO CHANGE IN LUMINOUS OUTPUT AS A RESULT OF DIFFERENCE IN AMBIENT TEMPERATURE AND METHOD OF MOUNTING THE LUMINAIRE.



LUMINAIRE TESTING LABORATORY, INC.



905 Harrison Street · Allentown, PA 18103 · (610) 770-1044 · Fax (610) 770-8912 · www.LuminaireTesting.com

INITIAL ILLUMINATION OF 50 FOOTCANDLES USING LTL TEST NUMBER 06522
 LUMINAIRE SUSPENSION LENGTH = 1.5
 WORKING PLANE HEIGHT = 2.50
 FLOOR REFLECTANCE = 20

ROOM HT	CEIL RF	8				9				10				12			
		80	70	80	70	80	70	80	70	80	70	80	70				
WALL RF		70	50	50	30	70	50	50	30	70	50	50	30	70	50	50	30
WIDTH	LENGTH																
10.	10.	2	2	2	2	2	2	2	2	2	2	2	3	2	2	3	3
10.	15.	2	2	3	3	2	2	3	3	2	3	3	3	3	3	3	4
15.	20.	3	4	4	4	3	4	4	5	4	4	5	5	4	5	5	6
15.	30.	5	5	6	6	5	5	6	6	5	6	6	7	5	6	7	8
20.	20.	4	4	5	5	4	5	5	6	4	5	6	6	5	6	6	7
20.	30.	6	6	7	7	6	6	7	8	6	7	8	8	7	7	9	9
20.	40.	7	8	9	9	8	8	9	10	8	9	10	11	8	9	11	12
20.	60.	11	11	13	13	11	12	13	14	11	12	14	15	12	13	15	17
30.	30.	8	9	10	10	8	9	10	11	9	9	11	11	9	10	12	13
30.	40.	10	11	13	13	11	11	13	14	11	12	14	14	12	13	15	16
30.	50.	13	13	15	16	13	14	16	17	13	14	16	17	14	15	18	19
30.	60.	15	16	18	19	15	16	19	20	16	17	19	21	17	18	21	22
60.	60.	29	30	34	35	29	30	35	36	30	31	36	37	31	33	38	39
60.	80.	38	39	45	46	38	40	46	47	39	41	47	49	40	42	49	51
60.	100.	47	48	56	57	48	49	57	58	48	50	58	60	50	52	60	63
100.	100.	77	78	91	92	78	80	92	94	79	81	93	96	80	83	96	99

QUANTITY OF LUMINAIRES