



LTL NUMBER: 06523

DATE: 02-20-2002

PREPARED FOR: PRECISION ARCHITECTURAL LIGHTING

CATALOG NUMBER: LMSO3-PH-X-SR-4-120-T8

LUMINAIRE: EXTRUDED ALUMINUM HOUSING WITH FORMED STEEL ENDS, FORMED SPECULAR ALUMINUM REFLECTOR, PERFORATED SECTIONS WITH TRANSLUCENT WHITE ACRYLIC INSERTS, OPEN TOP.

LAMPS: THREE PHILIPS F32T8/TL841 RATED AT 2850 LUMENS EACH.

BALLAST: ONE ADVANCE REL-3P32-SC

MOUNTING: PENDENT

LUMEN TO CANDELA RATIO USED = 9.18

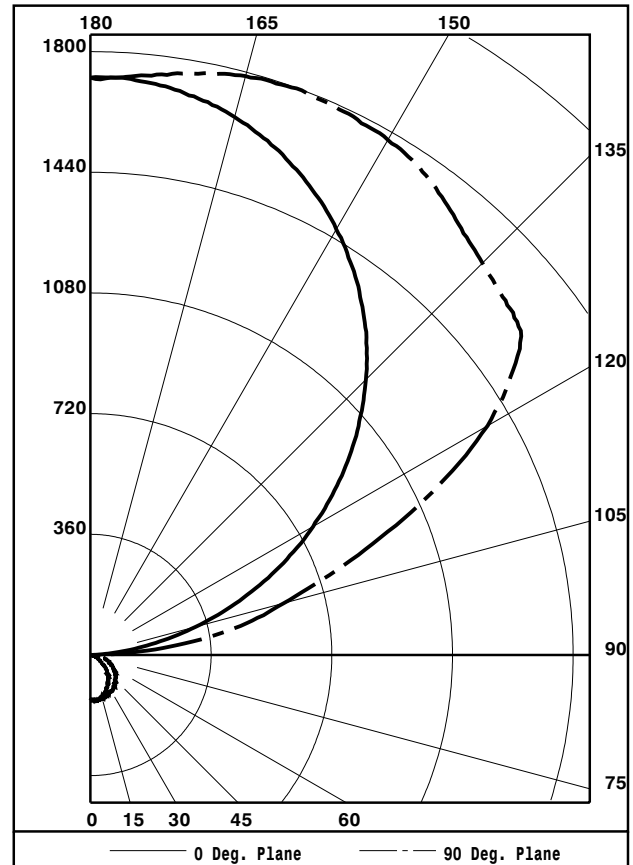
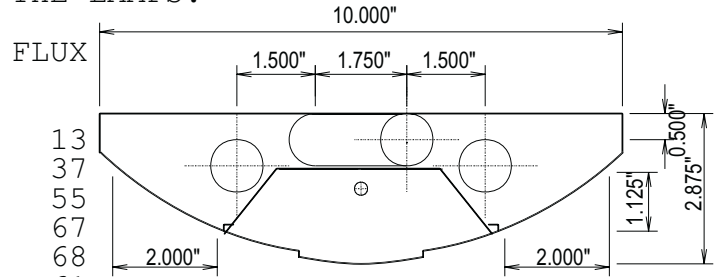
TOTAL INPUT WATTS = 85.8 AT 120.0 VOLTS

THE 0 DEGREE PLANE IS PARALLEL WITH THE LAMPS.

#06523

CANDELA DISTRIBUTION

	0.0	22.5	45.0	67.5	90.0
0	136	136	136	136	136
5	134	134	135	133	134
15	130	129	132	136	137
25	108	114	114	123	124
35	93	93	107	117	118
45	69	79	90	103	105
55	44	56	70	86	88
65	25	34	49	61	68
75	9	17	27	40	49
85	0	8	12	22	26
90	0	6	13	20	24
95	64	155	186	191	194
105	324	559	589	590	596
115	622	822	1089	1112	1102
125	906	1093	1302	1512	1556
135	1163	1319	1488	1601	1654
145	1378	1492	1628	1716	1746
155	1545	1615	1713	1768	1789
165	1662	1691	1745	1776	1788
175	1718	1721	1732	1734	1736
180	1722	1722	1722	1722	1722



ZONAL LUMEN SUMMARY

ZONE	LUMENS	%LAMP	%FIXT
0- 30	105	1.2	1.5
0- 40	172	2.0	2.5
0- 60	301	3.5	4.4
0- 90	393	4.6	5.8
90-120	1721	20.1	25.2
90-130	2865	33.5	42.0
90-150	4991	58.4	73.2
90-180	6428	75.2	94.2
0-180	6821	79.8	100.0

TOTAL LUMINAIRE EFFICIENCY: 79.8%  
 CIE TYPE: INDIRECT  
 PLANE: 0-DEG 90-DEG  
 SPACING CRITERIA: 1.1 1.4

TESTED BY HERSCHEL SCHRECK  
 CHECKED BY MIKE GRATHER



LUMINAIRE TESTING LABORATORY, INC.



905 Harrison Street · Allentown, PA 18103 · (610) 770-1044 · Fax (610) 770-8912 · www.LuminaireTesting.com

LTL NUMBER: 06523

DATE: 02-20-2002

PREPARED FOR: PRECISION ARCHITECTURAL LIGHTING

COEFFICIENTS OF UTILIZATION - ZONAL CAVITY METHOD
EFFECTIVE FLOOR CAVITY REFLECTANCE 0.20

Table with columns RC, RW, and rows for cavity heights 80, 70, 50, 30, 10, 0. Each row contains 18 numerical values representing utilization coefficients.

PLANE: 0-DEG 90-DEG
LUMINOUS LENGTH: 46.500 4.000
HEIGHT OF SIDE: 0.000 1.125

Table with columns ANGLE IN DEG, AVERAGE, and rows for angles 0, 45, 55, 65, 75, 85. Values represent luminance in candela per square meter.



LTL NUMBER: 06523

DATE: 02-20-2002

PREPARED FOR: PRECISION ARCHITECTURAL LIGHTING

CANDELA DISTRIBUTION

Table with 6 columns of candela values for various angles from 0 to 180 degrees.

ZONAL LUMEN SUMMARY

Table with 2 columns: Zonal angle ranges and corresponding lumen values.

THIS TEST WAS CONDUCTED USING RELATIVE PHOTOMETRY TECHNIQUES ACCORDING TO STANDARD IESNA PROCEDURES. THE USER MUST THEREFORE USE CAUTION IN THE FOLLOWING SITUATIONS: 1) THIS TEST WAS PERFORMED USING A SPECIFIC BALLAST/LAMP COMBINATION. EXTRAPOLATION OF THESE DATA FOR OTHER BALLAST/LAMP COMBINATIONS MAY PRODUCE ERRONEOUS RESULTS. 2) ACCORDING TO IESNA PROCEDURES, THE BALLAST(S) AND LAMP(S) ARE PRESUMED TO PRODUCE 100% OF RATED OUTPUT. AN APPROPRIATE BALLAST FACTOR MUST BE APPLIED TO THE LUMEN OUTPUT RATINGS AND LUMINOUS INTENSITY VALUES GIVEN. 3) THIS TEST WAS CONDUCTED IN A CONTROLLED LABORATORY ENVIRONMENT WHERE THE AMBIENT TEMPERATURE WAS HELD AT 25°C ±1°C. FIELD PERFORMANCE MAY DIFFER PARTICULARLY IN REGARDS TO CHANGE IN LUMINOUS OUTPUT AS A RESULT OF DIFFERENCE IN AMBIENT TEMPERATURE AND METHOD OF MOUNTING THE LUMINAIRE.



LUMINAIRE TESTING LABORATORY, INC.



905 Harrison Street · Allentown, PA 18103 · (610) 770-1044 · Fax (610) 770-8912 · www.LuminaireTesting.com

INITIAL ILLUMINATION OF 50 FOOTCANDLES USING LTL TEST NUMBER 06523  
 LUMINAIRE SUSPENSION LENGTH = 1.5  
 WORKING PLANE HEIGHT = 2.50  
 FLOOR REFLECTANCE = 20

ROOM HT	CEIL RF	8				9				10				12			
		80	70	50	30	80	70	50	30	80	70	50	30	80	70	50	30
WALL RF		70	50	50	30	70	50	50	30	70	50	50	30	70	50	50	30
WIDTH	LENGTH																
10.	10.	2	2	2	2	2	2	2	2	2	2	2	3	2	3	3	3
10.	15.	2	2	3	3	2	2	3	3	2	3	3	3	3	3	4	4
15.	20.	3	4	4	4	3	4	4	5	4	4	5	5	4	5	5	6
15.	30.	5	5	6	6	5	5	6	7	5	6	6	7	5	6	7	8
20.	20.	4	5	5	5	4	5	5	6	5	5	6	6	5	6	6	7
20.	30.	6	6	7	8	6	7	8	8	6	7	8	9	7	8	9	10
20.	40.	7	8	9	10	8	8	10	10	8	9	10	11	9	10	11	12
20.	60.	11	11	13	14	11	12	14	15	12	13	14	15	12	14	16	17
30.	30.	8	9	10	11	8	9	10	11	9	10	11	12	9	10	12	13
30.	40.	11	11	13	13	11	12	13	14	11	12	14	15	12	13	15	16
30.	50.	13	14	16	16	13	14	16	17	14	15	17	18	14	16	18	20
30.	60.	16	16	19	19	16	17	19	20	16	17	20	21	17	19	21	23
60.	60.	30	30	35	36	30	31	36	37	31	32	37	38	31	33	39	41
60.	80.	39	40	46	47	40	41	47	49	40	42	48	50	41	43	50	52
60.	100.	48	49	57	58	49	50	58	60	50	51	59	61	51	53	62	64
100.	100.	79	81	93	95	80	82	95	96	81	83	96	98	82	85	99	102

QUANTITY OF LUMINAIRES