



LTL NUMBER: 06451

DATE: 01-24-2002

PREPARED FOR: PRECISION ARCHITECTURAL LIGHTING

CATALOG NUMBER: LMSO2A-GP-4-X-OP/PF-X-120-T8

LUMINAIRE: EXTRUDED ALUMINUM HOUSING WITH FORMED STEEL ENDS, FORMED WHITE ENAMEL ALUMINUM REFLECTOR, PERFORATED SECTIONS WITH TRANSLUCENT WHITE ACRYLIC INSERTS, OPEN TOP.

LAMPS: TWO PHILIPS F32T8/TL841 RATED AT 2850 LUMENS EACH.

BALLAST: ONE ADVANCE REL-2P32-SC

MOUNTING: PENDENT

LUMEN TO CANDELA RATIO USED = 9.18

TOTAL INPUT WATTS = 59.7 AT 120.0 VOLTS

THE 0 DEGREE PLANE IS PARALLEL WITH THE LAMPS.

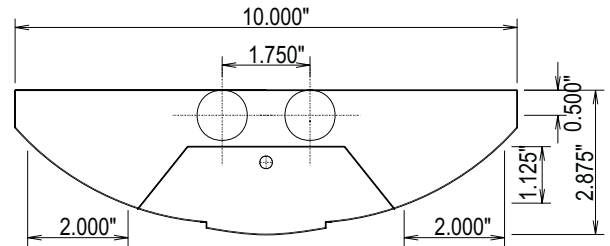
#06451

CANDELA DISTRIBUTION

	0.0	22.5	45.0	67.5	90.0
0	47	47	47	47	47
5	47	47	47	47	47
15	45	44	45	45	45
25	40	40	40	42	45
35	33	33	40	41	42
45	26	27	34	37	40
55	16	24	26	33	34
65	9	17	18	25	25
75	7	7	12	16	16
85	0	4	8	7	9
90	0	4	8	10	13
95	45	158	183	190	192
105	239	418	585	663	665
115	457	610	781	885	920
125	662	771	938	1042	1074
135	842	921	1049	1143	1176
145	991	1042	1130	1196	1222
155	1108	1133	1189	1225	1237
165	1187	1198	1221	1236	1241
175	1233	1230	1236	1233	1232
180	1234	1234	1234	1234	1234

FLUX

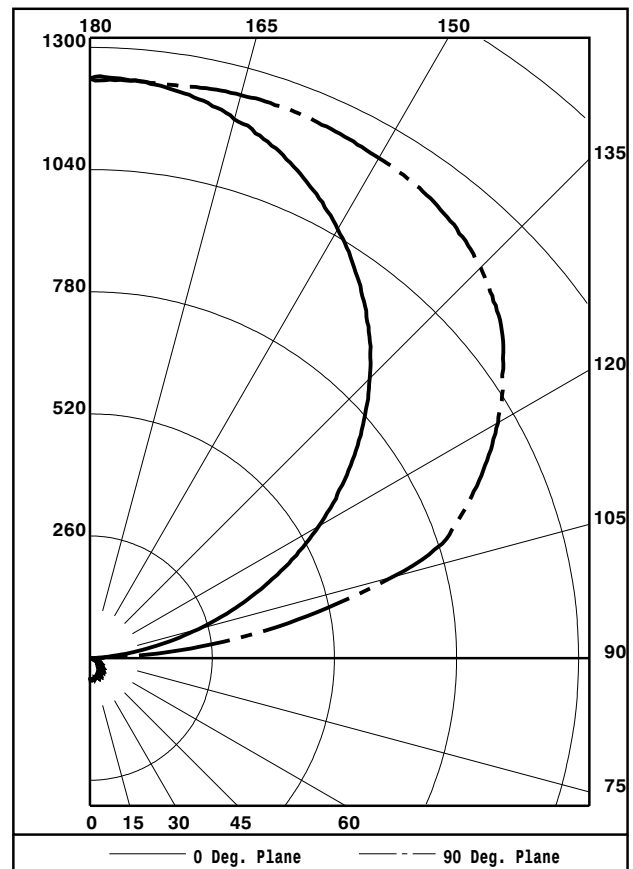
4
12
19
24
25
24
19
13
7
181
550
734
810
796
701
545
344
118



ZONAL LUMEN SUMMARY

ZONE	LUMENS	%LAMP	%FIXT
0- 30	36	0.6	0.7
0- 40	59	1.0	1.2
0- 60	108	1.9	2.2
0- 90	148	2.6	3.0
90-120	1464	25.7	29.7
90-130	2274	39.9	46.2
90-150	3772	66.2	76.6
90-180	4779	83.8	97.0
0-180	4926	86.4	100.0

TOTAL LUMINAIRE EFFICIENCY: 86.4%  
TOTAL REFLECTANCE OF PAINT: 91.3%  
CIE TYPE: INDIRECT  
PLANE: 0-DEG 90-DEG  
SPACING CRITERIA: 1.2 1.4



TESTED BY HERSCHEL SCHRECK  
CHECKED BY MIKE GRATHER



LUMINAIRE TESTING LABORATORY, INC.



905 Harrison Street · Allentown, PA 18103 · (610) 770-1044 · Fax (610) 770-8912 · www.LuminaireTesting.com

LTL NUMBER: 06451

DATE: 01-24-2002

PREPARED FOR: PRECISION ARCHITECTURAL LIGHTING

COEFFICIENTS OF UTILIZATION - ZONAL CAVITY METHOD
EFFECTIVE FLOOR CAVITY REFLECTANCE 0.20

Table with 18 columns (RC, RW, 80, 70, 50, 30, 10, 0) and 11 rows (0-10) showing utilization coefficients.

PLANE: 0-DEG 90-DEG
LUMINOUS LENGTH: 46.500 4.000
HEIGHT OF SIDE: 0.000 1.125

Table with 4 columns (ANGLE IN DEG, AVERAGE 0-DEG, AVERAGE 45-DEG, AVERAGE 90-DEG) and 6 rows (0, 45, 55, 65, 75, 85) showing luminance values.



LTL NUMBER: 06451

DATE: 01-24-2002

PREPARED FOR: PRECISION ARCHITECTURAL LIGHTING

CANDELA DISTRIBUTION

ZONAL LUMEN SUMMARY

Table with 6 columns: Candela values (0, 5, 10, 15, 20, 25, 30, 35, 40, 45, 50, 55, 60, 65, 70, 75, 80, 85, 90, 95, 100, 105, 110, 115, 120, 125, 130, 135, 140, 145, 150, 155, 160, 165, 170, 175, 180) and Zonal Lumen Summary values (0-5, 5-10, 10-15, 15-20, 20-25, 25-30, 30-35, 35-40, 40-45, 45-50, 50-55, 55-60, 60-65, 65-70, 70-75, 75-80, 80-85, 85-90, 90-95, 95-100, 100-105, 105-110, 110-115, 115-120, 120-125, 125-130, 130-135, 135-140, 140-145, 145-150, 150-155, 155-160, 160-165, 165-170, 170-175, 175-180).

THIS TEST WAS CONDUCTED USING RELATIVE PHOTOMETRY TECHNIQUES ACCORDING TO STANDARD IESNA PROCEDURES. THE USER MUST THEREFORE USE CAUTION IN THE FOLLOWING SITUATIONS: 1) THIS TEST WAS PERFORMED USING A SPECIFIC BALLAST/LAMP COMBINATION. EXTRAPOLATION OF THESE DATA FOR OTHER BALLAST/LAMP COMBINATIONS MAY PRODUCE ERRONEOUS RESULTS. 2) ACCORDING TO IESNA PROCEDURES, THE BALLAST(S) AND LAMP(S) ARE PRESUMED TO PRODUCE 100% OF RATED OUTPUT. AN APPROPRIATE BALLAST FACTOR MUST BE APPLIED TO THE LUMEN OUTPUT RATINGS AND LUMINOUS INTENSITY VALUES GIVEN. 3) THIS TEST WAS CONDUCTED IN A CONTROLLED LABORATORY ENVIRONMENT WHERE THE AMBIENT TEMPERATURE WAS HELD AT 25°C ±1°C. FIELD PERFORMANCE MAY DIFFER PARTICULARLY IN REGARDS TO CHANGE IN LUMINOUS OUTPUT AS A RESULT OF DIFFERENCE IN AMBIENT TEMPERATURE AND METHOD OF MOUNTING THE LUMINAIRE.



LUMINAIRE TESTING LABORATORY, INC.



905 Harrison Street · Allentown, PA 18103 · (610) 770-1044 · Fax (610) 770-8912 · www.LuminaireTesting.com

INITIAL ILLUMINATION OF 50 FOOTCANDLES USING LTL TEST NUMBER 06451  
 LUMINAIRE SUSPENSION LENGTH = 1.5  
 WORKING PLANE HEIGHT = 2.50  
 FLOOR REFLECTANCE = 20

ROOM HT		8				9				10				12			
CEIL RF		80		70		80		70		80		70		80		70	
WALL RF		70	50	50	30	70	50	50	30	70	50	50	30	70	50	50	30
WIDTH	LENGTH																
10.	10.	2	2	3	3	2	3	3	3	2	3	3	4	3	3	4	5
10.	15.	3	3	3	4	3	3	4	4	3	4	4	5	3	4	5	6
15.	20.	4	5	6	6	5	5	6	7	5	6	6	7	5	6	7	8
15.	30.	6	7	8	8	7	7	8	9	7	8	9	10	7	9	10	11
20.	20.	6	6	7	8	6	6	7	8	6	7	8	9	7	8	9	10
20.	30.	8	9	10	10	8	9	10	11	9	9	11	12	9	10	12	13
20.	40.	10	11	13	13	11	11	13	14	11	12	14	15	12	13	15	17
20.	60.	15	16	18	19	15	17	19	20	16	17	20	22	17	19	22	24
30.	30.	11	12	14	15	12	13	14	15	12	13	15	16	13	14	16	18
30.	40.	15	15	18	19	15	16	19	20	15	17	19	21	16	18	21	23
30.	50.	18	19	22	23	18	20	23	24	19	20	24	25	20	22	25	27
30.	60.	21	22	26	27	22	23	27	28	22	24	28	29	24	26	30	32
60.	60.	41	42	49	50	42	43	50	52	42	44	52	54	44	46	54	57
60.	80.	54	56	65	66	55	57	66	68	56	58	67	70	57	60	70	73
60.	100.	67	69	80	82	68	70	82	84	69	72	83	86	71	74	86	90
100.	100.	110	112	131	132	111	114	132	135	112	115	134	137	115	119	138	143

QUANTITY OF LUMINAIRES