



LTL NUMBER: 06405

DATE: 01-09-2002

PREPARED FOR: PRECISION ARCHITECTURAL LIGHTING

CATALOG NUMBER: LMSO2-GP-4-X-OP/PF-X-120-T5-HO

LUMINAIRE: EXTRUDED ALUMINUM HOUSING WITH FORMED STEEL ENDS, FORMED WHITE ENAMEL ALUMINUM REFLECTOR, PERFORATED SECTIONS WITH TRANSLUCENT WHITE ACRYLIC INSERTS, OPEN TOP.

LAMPS: TWO SYLVANIA FP54/830/HO RATED AT 4400 LUMENS EACH.

BALLAST: ONE ADVANCE ICN-2S54

MOUNTING: PENDENT

LUMEN TO CANDELA RATIO USED = 9.18

TOTAL INPUT WATTS =125.9 AT 120.0 VOLTS

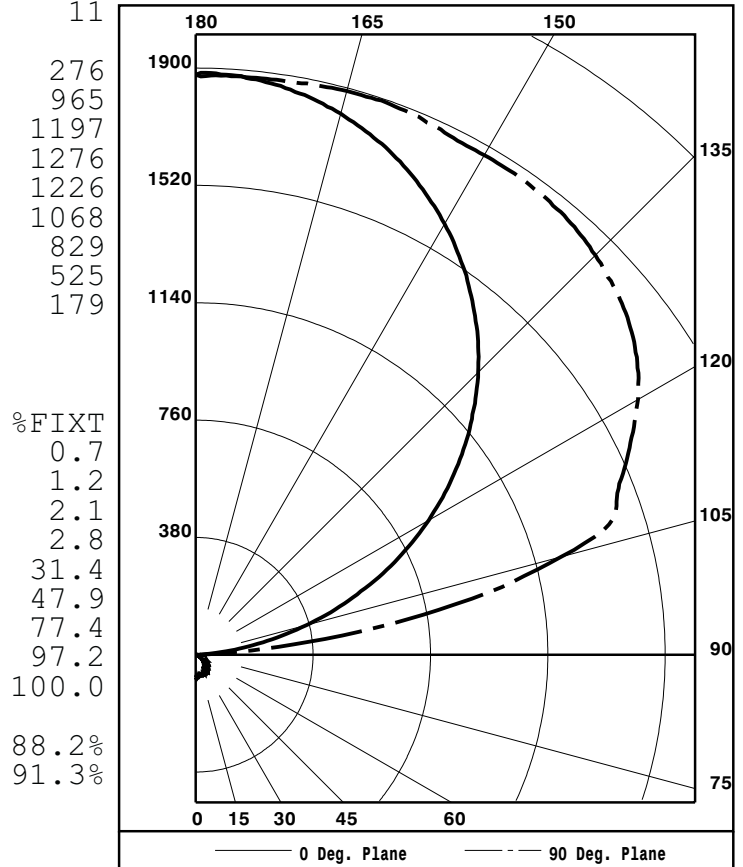
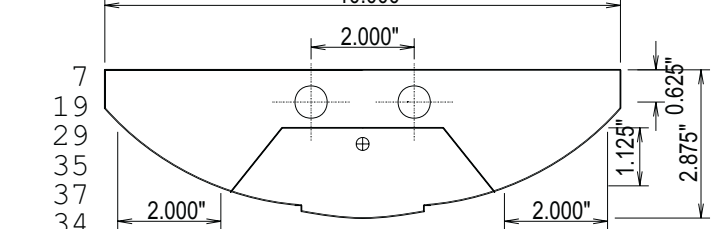
THE 0 DEGREE PLANE IS PARALLEL WITH THE LAMPS.

#06405

CANDELA DISTRIBUTION

	0.0	22.5	45.0	67.5	90.0
0	73	73	73	73	73
5	73	72	71	71	70
15	67	68	68	68	68
25	60	60	61	65	68
35	48	49	57	64	66
45	35	39	49	54	56
55	23	30	38	45	49
65	14	21	28	36	37
75	9	10	17	24	29
85	3	5	12	17	19
90	0	5	7	11	14
95	62	300	275	237	222
105	372	691	1019	1216	1225
115	710	963	1271	1469	1545
125	1021	1183	1467	1664	1736
135	1293	1411	1605	1769	1831
145	1518	1590	1709	1819	1868
155	1693	1728	1808	1856	1877
165	1814	1824	1857	1878	1890
175	1875	1873	1880	1876	1878
180	1879	1879	1879	1879	1879

FLUX



ZONAL LUMEN SUMMARY

ZONE	LUMENS	%LAMP	%FIXT
0- 30	55	0.6	0.7
0- 40	90	1.0	1.2
0- 60	160	1.8	2.1
0- 90	219	2.5	2.8
90-120	2438	27.7	31.4
90-130	3713	42.2	47.9
90-150	6008	68.3	77.4
90-180	7540	85.7	97.2
0-180	7759	88.2	100.0

TOTAL LUMINAIRE EFFICIENCY: 88.2%
TOTAL REFLECTANCE OF PAINT: 91.3%
CIE TYPE: INDIRECT
PLANE: 0-DEG 90-DEG
SPACING CRITERIA: 1.1 1.4

CHECKED BY MIKE GRATHER



LTL NUMBER: 06405

DATE: 01-09-2002

PREPARED FOR: PRECISION ARCHITECTURAL LIGHTING

COEFFICIENTS OF UTILIZATION - ZONAL CAVITY METHOD
EFFECTIVE FLOOR CAVITY REFLECTANCE 0.20

Table with columns RC, RW, and rows for angles 80, 70, 50, 30, 10, 0. Each cell contains a numerical value representing the coefficient of utilization.

PLANE: 0-DEG 90-DEG
LUMINOUS LENGTH: 46.500 4.000
HEIGHT OF SIDE: 0.000 1.125

Table with columns ANGLE IN DEG, AVERAGE 0-DEG, AVERAGE 45-DEG, AVERAGE 90-DEG. Values range from 287 to 608.



LTL NUMBER: 06405

DATE: 01-09-2002

PREPARED FOR: PRECISION ARCHITECTURAL LIGHTING

CANDELA DISTRIBUTION

ZONAL LUMEN SUMMARY

Table with 6 columns for Candela values and 2 columns for Zonal Lumen Summary. Rows range from 0 to 180 degrees.

THIS TEST WAS CONDUCTED USING RELATIVE PHOTOMETRY TECHNIQUES ACCORDING TO STANDARD IESNA PROCEDURES. THE USER MUST THEREFORE USE CAUTION IN THE FOLLOWING SITUATIONS: 1) THIS TEST WAS PERFORMED USING A SPECIFIC BALLAST/LAMP COMBINATION. EXTRAPOLATION OF THESE DATA FOR OTHER BALLAST/LAMP COMBINATIONS MAY PRODUCE ERRONEOUS RESULTS. 2) ACCORDING TO IESNA PROCEDURES, THE BALLAST(S) AND LAMP(S) ARE PRESUMED TO PRODUCE 100% OF RATED OUTPUT. AN APPROPRIATE BALLAST FACTOR MUST BE APPLIED TO THE LUMEN OUTPUT RATINGS AND LUMINOUS INTENSITY VALUES GIVEN. 3) THIS TEST WAS CONDUCTED IN A CONTROLLED LABORATORY ENVIRONMENT WHERE THE AMBIENT TEMPERATURE WAS HELD AT 25°C ±1°C. FIELD PERFORMANCE MAY DIFFER PARTICULARLY IN REGARDS TO CHANGE IN LUMINOUS OUTPUT AS A RESULT OF DIFFERENCE IN AMBIENT TEMPERATURE AND METHOD OF MOUNTING THE LUMINAIRE.



LUMINAIRE TESTING LABORATORY, INC.



905 Harrison Street · Allentown, PA 18103 · (610) 770-1044 · Fax (610) 770-8912 · www.LuminaireTesting.com

INITIAL ILLUMINATION OF 50 FOOTCANDLES USING LTL TEST NUMBER 06405
 LUMINAIRE SUSPENSION LENGTH = 1.5
 WORKING PLANE HEIGHT = 2.50
 FLOOR REFLECTANCE = 20

ROOM HT	CEIL RF	8				9				10				12			
		80	70	50	30	80	70	50	30	80	70	50	30	80	70	50	30
WALL RF		70	50	50	30	70	50	50	30	70	50	50	30	70	50	50	30
WIDTH	LENGTH																
10.	10.	1	2	2	2	2	2	2	2	2	2	2	3	2	2	3	3
10.	15.	2	2	2	3	2	2	3	3	2	2	3	3	2	3	3	4
15.	20.	3	3	4	4	3	4	4	4	3	4	4	5	4	4	5	6
15.	30.	4	4	5	6	4	5	5	6	5	5	6	6	5	6	7	7
20.	20.	4	4	5	5	4	4	5	5	4	5	5	6	4	5	6	7
20.	30.	5	6	6	7	5	6	7	7	6	6	7	8	6	7	8	9
20.	40.	7	7	8	9	7	7	9	9	7	8	9	10	8	9	10	11
20.	60.	10	10	12	12	10	11	12	13	10	11	13	14	11	12	14	15
30.	30.	7	8	9	9	8	8	9	10	8	8	10	11	8	9	11	12
30.	40.	10	10	12	12	10	10	12	13	10	11	12	13	11	12	13	15
30.	50.	12	12	14	15	12	13	15	15	12	13	15	16	13	14	16	18
30.	60.	14	14	17	17	14	15	17	18	14	15	18	19	15	16	19	21
60.	60.	26	27	31	32	27	28	32	33	27	28	33	34	28	30	34	36
60.	80.	35	35	41	42	35	36	42	43	36	37	43	44	37	39	45	47
60.	100.	43	44	51	52	43	45	52	53	44	46	53	55	45	47	55	57
100.	100.	70	71	83	84	71	72	84	86	72	74	85	87	73	76	88	91

QUANTITY OF LUMINAIRES