



LTL NUMBER: 06452

DATE: 01-24-2002

PREPARED FOR: PRECISION ARCHITECTURAL LIGHTING

CATALOG NUMBER: LMSO2A-HP-4-X-OP/PF-X-120-T8

LUMINAIRE: EXTRUDED ALUMINUM HOUSING WITH FORMED STEEL ENDS, FORMED SPECULAR ALUMINUM REFLECTOR, PERFORATED SECTIONS WITH TRANSLUCENT WHITE ACRYLIC INSERTS, OPEN TOP.

LAMPS: TWO PHILIPS F32T8/TL841 RATED AT 2850 LUMENS EACH.

BALLAST: ONE ADVANCE REL-2P32-SC

MOUNTING: PENDENT

LUMEN TO CANDELA RATIO USED = 9.18

TOTAL INPUT WATTS = 59.4 AT 120.0 VOLTS

THE 0 DEGREE PLANE IS PARALLEL WITH THE LAMPS.

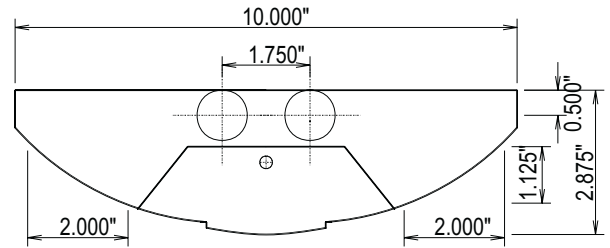
#06452

CANDELA DISTRIBUTION

	0.0	22.5	45.0	67.5	90.0
0	43	43	43	43	43
5	45	45	44	44	43
15	40	39	40	41	41
25	37	38	40	40	40
35	32	33	35	41	40
45	26	25	34	34	36
55	16	19	25	29	32
65	9	15	17	24	24
75	6	7	10	16	16
85	0	3	8	9	9
90	0	5	8	11	13
95	40	154	183	189	191
105	187	394	570	634	637
115	352	596	760	870	908
125	510	786	936	1024	1064
135	653	909	1089	1165	1194
145	769	981	1171	1260	1284
155	864	1006	1158	1242	1274
165	927	998	1089	1148	1169
175	960	970	992	1003	1010
180	963	963	963	963	963

FLUX

4
11
19
23
24
22
18
13
6
177
526
709
791
789
696
517
304
95



ZONAL LUMEN SUMMARY

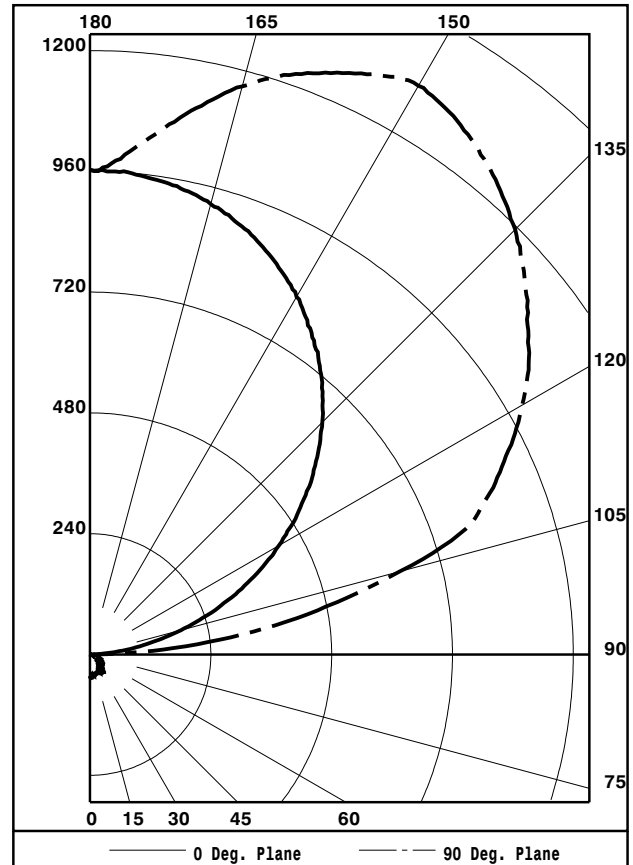
ZONE	LUMENS	%LAMP	%FIXT
0- 30	34	0.6	0.7
0- 40	57	1.0	1.2
0- 60	102	1.8	2.2
0- 90	138	2.4	2.9
90-120	1411	24.8	29.8
90-130	2203	38.6	46.4
90-150	3688	64.7	77.8
90-180	4604	80.8	97.1
0-180	4742	83.2	100.0

TOTAL LUMINAIRE EFFICIENCY: 83.2%

CIE TYPE: INDIRECT

PLANE: 0-DEG 90-DEG

SPACING CRITERIA: 1.2 1.5



TESTED BY HERSCHEL SCHRECK
 CHECKED BY MIKE GRATHER



LUMINAIRE TESTING LABORATORY, INC.



905 Harrison Street · Allentown, PA 18103 · (610) 770-1044 · Fax (610) 770-8912 · www.LuminaireTesting.com

LTL NUMBER: 06452

DATE: 01-24-2002

PREPARED FOR: PRECISION ARCHITECTURAL LIGHTING

COEFFICIENTS OF UTILIZATION - ZONAL CAVITY METHOD
EFFECTIVE FLOOR CAVITY REFLECTANCE 0.20

Table with 18 columns (RC, RW, 80, 70, 50, 30, 10, 0) and 11 rows (0-10) showing utilization coefficients.

PLANE: 0-DEG 90-DEG
LUMINOUS LENGTH: 46.500 4.000
HEIGHT OF SIDE: 0.000 1.125

Table with 4 columns (ANGLE IN DEG, AVERAGE 0-DEG, AVERAGE 45-DEG, AVERAGE 90-DEG) and 6 rows (0, 45, 55, 65, 75, 85) showing luminance values.



LTL NUMBER: 06452

DATE: 01-24-2002

PREPARED FOR: PRECISION ARCHITECTURAL LIGHTING

CANDELA DISTRIBUTION

ZONAL LUMEN SUMMARY

Table with 6 columns: Candela values at 0.0, 22.5, 45.0, 67.5, 90.0 degrees and Zonal Lumen Summary ranges from 0-5 to 175-180 degrees.

THIS TEST WAS CONDUCTED USING RELATIVE PHOTOMETRY TECHNIQUES ACCORDING TO STANDARD IESNA PROCEDURES. THE USER MUST THEREFORE USE CAUTION IN THE FOLLOWING SITUATIONS: 1) THIS TEST WAS PERFORMED USING A SPECIFIC BALLAST/LAMP COMBINATION. EXTRAPOLATION OF THESE DATA FOR OTHER BALLAST/LAMP COMBINATIONS MAY PRODUCE ERRONEOUS RESULTS. 2) ACCORDING TO IESNA PROCEDURES, THE BALLAST(S) AND LAMP(S) ARE PRESUMED TO PRODUCE 100% OF RATED OUTPUT. AN APPROPRIATE BALLAST FACTOR MUST BE APPLIED TO THE LUMEN OUTPUT RATINGS AND LUMINOUS INTENSITY VALUES GIVEN. 3) THIS TEST WAS CONDUCTED IN A CONTROLLED LABORATORY ENVIRONMENT WHERE THE AMBIENT TEMPERATURE WAS HELD AT 25°C ±1°C. FIELD PERFORMANCE MAY DIFFER PARTICULARLY IN REGARDS TO CHANGE IN LUMINOUS OUTPUT AS A RESULT OF DIFFERENCE IN AMBIENT TEMPERATURE AND METHOD OF MOUNTING THE LUMINAIRE.



LUMINAIRE TESTING LABORATORY, INC.



905 Harrison Street · Allentown, PA 18103 · (610) 770-1044 · Fax (610) 770-8912 · www.LuminaireTesting.com

INITIAL ILLUMINATION OF 50 FOOTCANDLES USING LTL TEST NUMBER 06452
 LUMINAIRE SUSPENSION LENGTH = 1.5
 WORKING PLANE HEIGHT = 2.50
 FLOOR REFLECTANCE = 20

ROOM HT		8				9				10				12				
CEIL RF		80		70		80		70		80		70		80		70		
WALL RF		70	50	50	30	70	50	50	30	70	50	50	30	70	50	50	30	
WIDTH	LENGTH																	
10.	10.		2	2	3	3	2	3	3	3	2	3	3	4	3	3	4	5
10.	15.		3	3	4	4	3	3	4	4	3	4	4	5	4	4	5	6
15.	20.		5	5	6	6	5	5	6	7	5	6	7	7	6	7	8	9
15.	30.		6	7	8	9	7	7	9	9	7	8	9	10	8	9	10	12
20.	20.		6	6	7	8	6	7	8	8	6	7	8	9	7	8	9	10
20.	30.		8	9	10	11	9	9	11	12	9	10	11	12	10	11	13	14
20.	40.		11	11	13	14	11	12	14	15	11	12	14	16	12	14	16	18
20.	60.		15	16	19	20	16	17	20	21	16	18	21	22	17	20	23	25
30.	30.		12	12	14	15	12	13	15	16	12	14	16	17	13	15	17	19
30.	40.		15	16	19	19	16	17	19	20	16	17	20	21	17	19	22	23
30.	50.		19	20	23	24	19	20	24	25	20	21	24	26	21	23	26	28
30.	60.		22	23	27	28	23	24	28	29	23	25	29	30	24	27	31	33
60.	60.		43	44	51	52	43	45	52	54	44	46	54	56	45	48	56	59
60.	80.		56	58	67	69	57	59	68	70	58	60	70	72	59	63	73	76
60.	100.		70	71	83	85	71	73	85	87	72	74	86	89	73	77	90	94
100.	100.		115	117	136	138	116	118	137	140	117	120	139	143	119	123	143	148

QUANTITY OF LUMINAIRES