



LTL NUMBER: 06406

DATE: 01-09-2002

PREPARED FOR: PRECISION ARCHITECTURAL LIGHTING

CATALOG NUMBER: LMSO2-HP-4-X-OP/PF-X-120-T5-HO

LUMINAIRE: EXTRUDED ALUMINUM HOUSING WITH FORMED STEEL ENDS, FORMED SPECULAR ALUMINUM REFLECTOR, PERFORATED SECTIONS WITH TRANSLUCENT WHITE ACRYLIC INSERTS, OPEN TOP.

LAMPS: TWO SYLVANIA FP54/830/HO RATED AT 4400 LUMENS EACH.

BALLAST: ONE ADVANCE ICN-2S54

MOUNTING: PENDENT

LUMEN TO CANDELA RATIO USED = 9.18

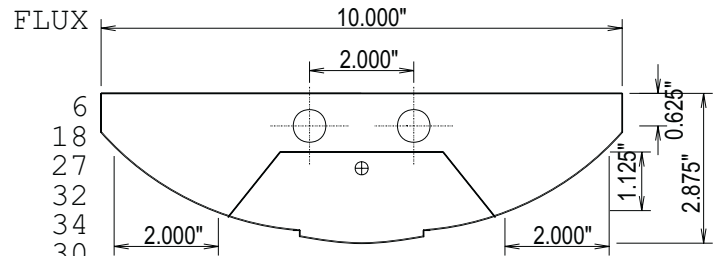
TOTAL INPUT WATTS =125.6 AT 120.0 VOLTS

THE 0 DEGREE PLANE IS PARALLEL WITH THE LAMPS.

#06406

CANDELA DISTRIBUTION

	0.0	22.5	45.0	67.5	90.0
0	67	67	67	67	67
5	68	68	68	67	67
15	63	62	62	63	63
25	55	55	56	60	64
35	45	48	52	58	59
45	34	36	45	51	52
55	20	27	34	41	42
65	12	18	24	32	36
75	8	11	18	24	26
85	3	5	10	13	18
90	0	5	6	11	13
95	49	292	274	238	223
105	260	609	980	1245	1248
115	496	1013	1147	1219	1321
125	715	1262	1617	1665	1660
135	916	1410	1849	2016	2070
145	1082	1465	1869	2106	2182
155	1212	1467	1767	1960	2021
165	1302	1425	1596	1706	1745
175	1350	1364	1403	1427	1436
180	1348	1348	1348	1348	1348



ZONAL LUMEN SUMMARY

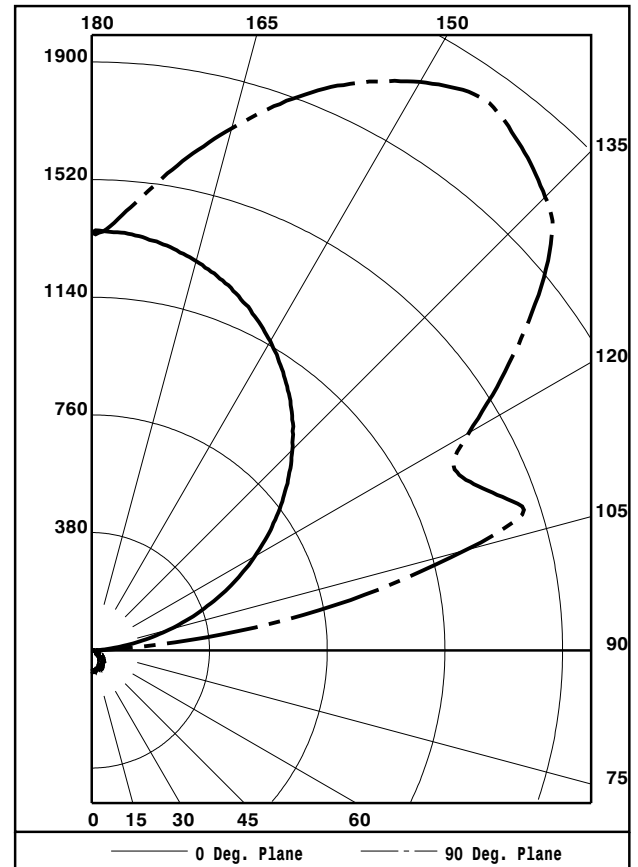
ZONE	LUMENS	%LAMP	%FIXT
0- 30	51	0.6	0.7
0- 40	83	0.9	1.1
0- 60	147	1.7	2.0
0- 90	201	2.3	2.7
90-120	2262	25.7	30.1
90-130	3543	40.3	47.1
90-150	5957	67.7	79.2
90-180	7325	83.2	97.3
0-180	7526	85.5	100.0

TOTAL LUMINAIRE EFFICIENCY: 85.5%

CIE TYPE: INDIRECT

PLANE: 0-DEG 90-DEG

SPACING CRITERIA: 1.1 1.4



CHECKED BY MIKE GRATHER



LUMINAIRE TESTING LABORATORY, INC.



905 Harrison Street · Allentown, PA 18103 · (610) 770-1044 · Fax (610) 770-8912 · www.LuminaireTesting.com

LTL NUMBER: 06406

DATE: 01-09-2002

PREPARED FOR: PRECISION ARCHITECTURAL LIGHTING

COEFFICIENTS OF UTILIZATION - ZONAL CAVITY METHOD
EFFECTIVE FLOOR CAVITY REFLECTANCE 0.20

Table with columns RC, RW, and rows for cavity heights 80, 70, 50, 30, 10, 0. Each row contains 18 numerical values representing utilization coefficients.

PLANE: 0-DEG 90-DEG
LUMINOUS LENGTH: 46.500 4.000
HEIGHT OF SIDE: 0.000 1.125

Table with columns ANGLE IN DEG, AVERAGE 0-DEG, AVERAGE 45-DEG, AVERAGE 90-DEG. Rows show luminance values for angles 0, 45, 55, 65, 75, 85.



LTL NUMBER: 06406

DATE: 01-09-2002

PREPARED FOR: PRECISION ARCHITECTURAL LIGHTING

CANDELA DISTRIBUTION

ZONAL LUMEN SUMMARY

Table with 6 columns: Candela values at 0.0, 22.5, 45.0, 67.5, 90.0 degrees and Zonal Lumen Summary ranges from 0-5 to 175-180.

THIS TEST WAS CONDUCTED USING RELATIVE PHOTOMETRY TECHNIQUES ACCORDING TO STANDARD IESNA PROCEDURES. THE USER MUST THEREFORE USE CAUTION IN THE FOLLOWING SITUATIONS: 1) THIS TEST WAS PERFORMED USING A SPECIFIC BALLAST/LAMP COMBINATION. EXTRAPOLATION OF THESE DATA FOR OTHER BALLAST/LAMP COMBINATIONS MAY PRODUCE ERRONEOUS RESULTS. 2) ACCORDING TO IESNA PROCEDURES, THE BALLAST(S) AND LAMP(S) ARE PRESUMED TO PRODUCE 100% OF RATED OUTPUT. AN APPROPRIATE BALLAST FACTOR MUST BE APPLIED TO THE LUMEN OUTPUT RATINGS AND LUMINOUS INTENSITY VALUES GIVEN. 3) THIS TEST WAS CONDUCTED IN A CONTROLLED LABORATORY ENVIRONMENT WHERE THE AMBIENT TEMPERATURE WAS HELD AT 25°C ±1°C. FIELD PERFORMANCE MAY DIFFER PARTICULARLY IN REGARDS TO CHANGE IN LUMINOUS OUTPUT AS A RESULT OF DIFFERENCE IN AMBIENT TEMPERATURE AND METHOD OF MOUNTING THE LUMINAIRE.



LUMINAIRE TESTING LABORATORY, INC.



905 Harrison Street · Allentown, PA 18103 · (610) 770-1044 · Fax (610) 770-8912 · www.LuminaireTesting.com

INITIAL ILLUMINATION OF 50 FOOTCANDLES USING LTL TEST NUMBER 06406
 LUMINAIRE SUSPENSION LENGTH = 1.5
 WORKING PLANE HEIGHT = 2.50
 FLOOR REFLECTANCE = 20

ROOM HT		8				9				10				12			
CEIL RF	WALL RF	80	70	50	30	80	70	50	30	80	70	50	30	80	70	50	30
10.	10.	2	2	2	2	2	2	2	2	2	2	2	3	2	2	3	3
10.	15.	2	2	2	3	2	2	3	3	2	3	3	3	2	3	3	4
15.	20.	3	3	4	4	3	4	4	4	3	4	4	5	4	4	5	6
15.	30.	4	5	5	6	4	5	6	6	5	5	6	7	5	6	7	8
20.	20.	4	4	5	5	4	4	5	5	4	5	5	6	5	5	6	7
20.	30.	5	6	7	7	6	6	7	7	6	6	7	8	6	7	8	9
20.	40.	7	7	8	9	7	8	9	9	7	8	9	10	8	9	10	11
20.	60.	10	11	12	13	10	11	13	13	11	12	13	14	11	12	14	16
30.	30.	8	8	9	10	8	8	10	10	8	9	10	11	9	9	11	12
30.	40.	10	10	12	12	10	11	12	13	10	11	13	14	11	12	14	15
30.	50.	12	13	15	15	12	13	15	16	13	13	16	17	13	14	17	18
30.	60.	14	15	17	18	15	15	18	19	15	16	18	19	16	17	20	21
60.	60.	27	28	32	33	27	29	33	34	28	29	34	35	29	31	35	37
60.	80.	36	37	42	43	36	37	43	45	37	38	44	46	38	40	46	48
60.	100.	44	45	53	54	45	46	54	55	45	47	55	56	47	49	57	59
100.	100.	72	74	86	87	73	75	87	89	74	76	88	90	75	78	91	94

QUANTITY OF LUMINAIRES