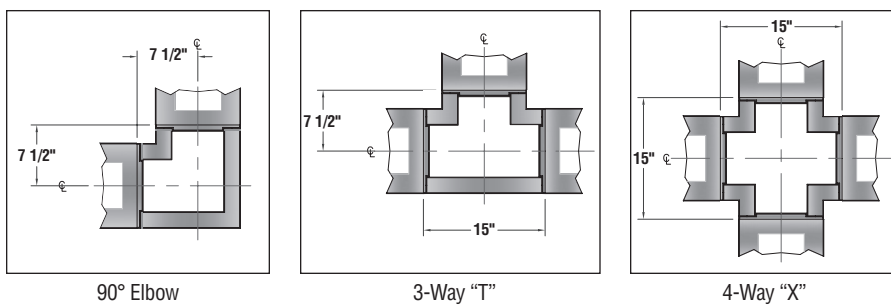


Catalog Number	Type
Project Name	

Latera Series™

Connector Specifications

S P E C I F I C A T I O N S



Latera Series **2 1/8" x 10 1/2"**

Construction .100" thick cast aluminum ends with .100" thick extruded aluminum arms.

Suspension Suspension occurs at each fixture end.

Finish Standard and premium finishes are baked powder coat electrostatically applied (2.0 mil. minimum thickness) to assure aesthetics and durability.

H O W T O O R D E R

Standard Connectors are 2-way 90°, 3-way "T", and 4-way "X".

Catalog Logic

All connectors should be specified and ordered as follows:

Series
Latera
Suspended

LTS-L90-F01M

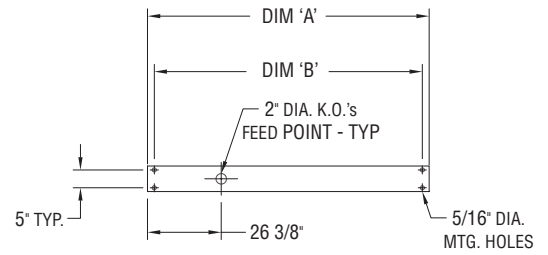
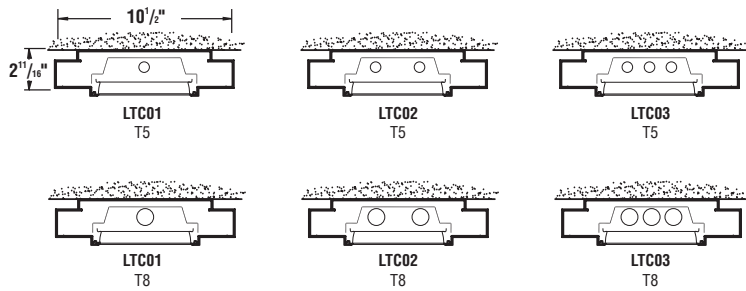
- | | |
|-----------------------|-----------------------------|
| Connector Type | Standard Finish |
| L90 | F01M Matte White |
| 90° Connector | Premium Finishes |
| T | F01G Gloss White |
| 3-Way Connector | F02 Ivory |
| X | F03 Stonewash |
| 4-Way Connector | F04 Camel |
| | F05 Gray Day |
| | F06 Pebble Beach |
| | F07 Steel |
| | F08 Gray Seal |
| | F09 Mocha |
| | F10 Bronzed |
| | F11 Black |
| | F12 Ultrasonic Clear |
| | F13 Merlot |
| | F14 Red Skies |
| | F15 Lemon |
| | F16 Forest Hunter |
| | F17 Olive |
| | F18 Khaki |
| | F19 Heather Green |
| | F20 Blue Print |
| | F21 Reflex Blue |
| | F22 Navy |
| | FCC Custom Color |



Latera Series™

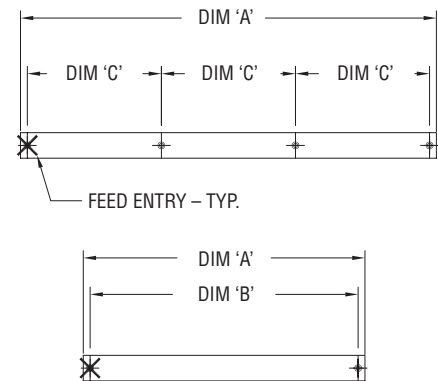
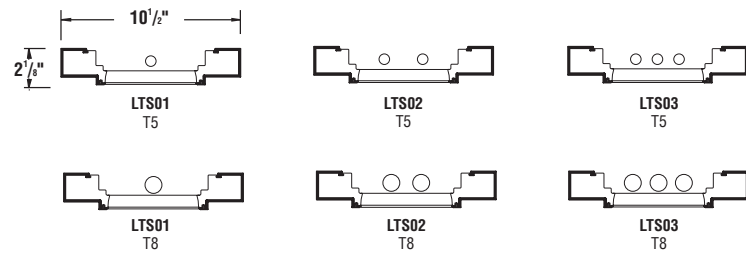
Standard Fixture Lengths and Mounting Centers

Ceiling Mount – Direct Configurations



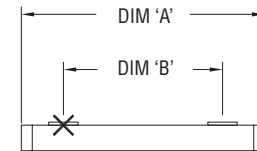
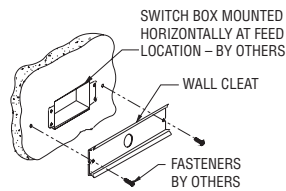
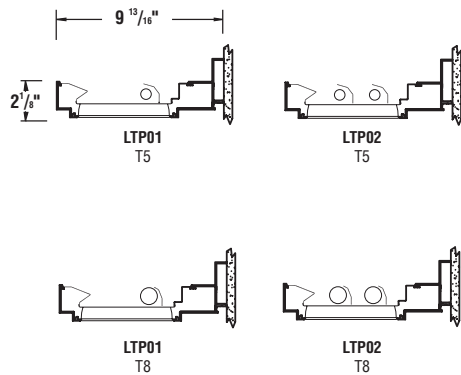
FIXTURE LENGTH		MOUNTING CENTERS	
DIM 'A'	DIM 'B'	DIM 'A'	DIM 'B'
52 3/4"	47 1/4"	100 3/4"	95 1/4"

Suspended (Cable Mount) – Indirect/Direct Configurations

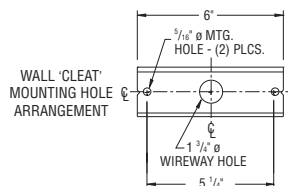


FIXTURE LENGTH	MOUNTING CENTERS	
	DIM 'B'	DIM 'C'
52 3/4"	48"	—
100 3/4"	96"	—
148 3/4"	—	48"

Wall Mount – Indirect/Direct Configurations



FIXTURE LENGTH	MOUNTING CENTERS	
	DIM 'A'	DIM 'B'
52 3/4"	36"	84"



PAL RESERVES THE RIGHT TO CHANGE PRODUCT DESIGN AND SPECIFICATIONS. CONTACT FACTORY FOR MOST RECENT PRODUCT INFORMATION.

