

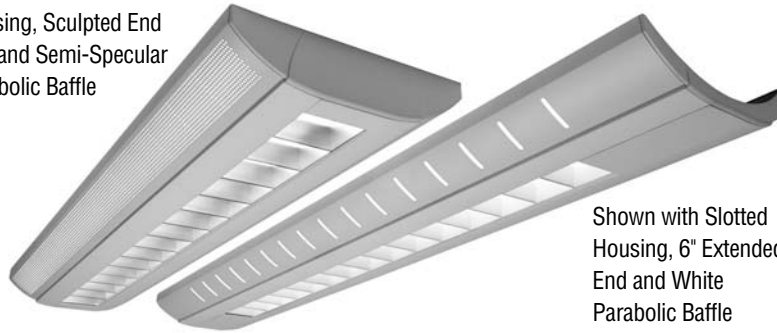
# Luminata II Series™

Catalog Number

Type

Project Name

Shown with Perforated Housing, Sculpted End Cap and Semi-Specular Parabolic Baffle



Shown with Slotted Housing, 6" Extended End and White Parabolic Baffle

## LMSI/D02

12" x 3" Indirect/Direct (T5 or T5HO Lamps)

### S P E C I F I C A T I O N S

#### Housing

- (PH) Perforated Housing - Two-piece .070" thick extruded aluminum with perforated hole pattern on each side. Perforations to be .125" on .185" staggered centers and backed with a translucent white acrylic diffuser.
- (SL) Slotted Housing - Two-piece .070" thick extruded aluminum with slotted hole pattern on each side. Slots to be 1/4" wide by 1 7/8" long on 3" centers and backed with a translucent white acrylic diffuser.
- (SH) Solid Housing - Two-piece .070" thick extruded aluminum.

#### End Caps

- (SE) Sculpted End - .125" thick die-cast aluminum finished to match fixture housing and secured with no visible fasteners.
- (XE) Extended End - 6" extension of extruded aluminum housing with a .125" low profile die cast aluminum end cap finished to match fixture housing and secured with no visible fasteners.

#### Finish

Standard and premium finishes are baked powder coat electrostatically applied (2.0 mil minimum thickness) to assure aesthetics and durability. Standard finish for canopies is white.

#### Direct Optical Controls

- (PB) 1 1/4" deep semi-specular aluminum parabolic baffle with blades on 3" centers.
- (PBW) 1 1/4" deep white aluminum parabolic baffle with blades on 3" centers.
- (BWPF) 1 1/4" deep perforated white aluminum baffle with straight blades on 3" centers.

#### Reflectors

Die-formed from .020" thick high reflectance specular aluminum.

#### Ballast

Standard ballasts for T5 and T5HO lamps are UL/CUL listed, Class P, HPF, electronic, universal 120/277volt, programmed rapid start with <10% THD.

#### Circuitry

All fixtures are factory pre-wired for a single circuit. Provision for multiple switching/circuiting is optional.

#### Wiring

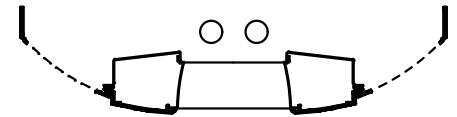
All fixtures intended for continuous rows are provided with factory installed quick-connect wiring.

#### Controls

Contact factory for daylight and/or occupancy sensor controls.

#### Certification

All fixtures are UL/CUL listed for use in "Dry Applications". "Damp Location" is optional.



T5 or T5HO

Standard Lengths:  
4', 8' and 12'

For Continuous Rows  
see Note below

#### Mounting

- CT = Cable (15/16" Tbar) Fully Adjustable (36" Standard)
- CN = Cable (Non-Tbar) Fully Adjustable (36" Standard)

Series  
LMSI/D02

#### End Caps

- SE  
Sculpted End
- XE  
Extended End

## LMSI/D02-PH-SE-12-CT-PB-FO1M-V-T5HO-□

Housing Style	Direct Optical Controls	Standard Finishes	Voltage	Lamp Type	Options
<b>PH</b> Perforated	<b>PB</b> Semi-Specular Parabolic Baffle	<b>F01M</b> Matte White <b>Premium Finishes</b>	120	T5	<b>SS-L/R (Left/Right)</b> Lamp Row Switching (Common Neutral Utilized)
<b>SH</b> Solid	<b>PBW</b> White Parabolic Baffle	<b>F01G</b> Gloss White	277	T5HO	<b>NLCKT</b> Separate Night Light Circuit
<b>SL</b> Slotted	<b>BWPF</b> Perforated White Baffle	<b>F02</b> Ivory	347		<b>EMCKT</b> Separate Emergency Circuit
		<b>F03</b> Stonewash			<b>EBPL</b> Emergency Battery Pack (635-700 Lumens)
		<b>F04</b> Camel			<b>EBPH</b> Emergency Battery Pack (975-1325 Lumens)
		<b>F05</b> Gray Day			<b>Dim</b> Dimming
		<b>F06</b> Pebble Beach			<b>FS</b> Fused Ballasts
		<b>F07</b> Steel			<b>GTD</b> Generator Transfer Device
		<b>F08</b> Gray Seal			<b>DC</b> Clear Acrylic Dust Cover (1/A for T5HO)
		<b>F09</b> Mocha			<b>AO</b> White Acrylic Baffle Overlay
		<b>F10</b> Bronzed			<b>DL</b> Damp Location
		<b>F11</b> Black			
		<b>F12</b> Ultrasonic Clear			
		<b>F13</b> Merlot			
		<b>F14</b> Red Skies			
		<b>F15</b> Lemon			
		<b>F16</b> Forest Hunter			
		<b>F17</b> Olive			
		<b>F18</b> Khaki			
		<b>F19</b> Heather Green			
		<b>F20</b> Blue Print			
		<b>F21</b> Reflex Blue			
		<b>F22</b> Navy			
		<b>FCC</b> Custom Color			

Note: For continuous rows over 12' specify nominal row length in 1' increments.



# LMSI/D02

## Indirect/Direct - T5HO Lamps

### Semi-Specular Baffle

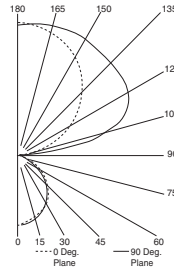
**Catalog Number:** LMSI/D02-PH-SE-4-C-PB-F01M-120-T5HO

**Report Number:** LTL#08689.ies

**Luminaire Description:** Extruded Aluminum Housing with Specular Aluminum Reflector and Semi-Specular Aluminum Baffle Open Top

**Lamps:** Two Philips F54T5/841/HO Rated at 4400 Lumens Each

Total Luminaire Efficiency = 85.1%  
78% Up 22% Down



### CANDELA DISTRIBUTION

	0.0	22.5	45.0	67.5	90.0	LUMENS
0	739	739	739	739	739	
5	730	734	737	735	736	70
15	687	693	700	703	707	197
25	620	625	630	636	643	291
35	530	533	534	541	553	336
45	425	423	421	424	440	328
55	301	294	287	289	306	261
65	59	78	101	118	132	101
75	7	10	15	20	22	17
85	2	4	7	9	10	7
90	0	3	5	7	8	
95	51	246	218	167	152	229
105	253	556	830	943	970	779
115	500	707	1040	1233	1297	961
125	740	901	1125	1328	1399	990
135	958	1076	1220	1343	1400	933
145	1137	1211	1323	1397	1425	817
155	1277	1317	1390	1438	1455	636
165	1374	1389	1421	1439	1449	401
175	1426	1422	1430	1427	1427	136
180	1425	1425	1425	1425	1425	

### COEFFICIENTS OF UTILIZATION - ZONAL CAVITY METHOD

Effective Floor Cavity Reflectance 0.20

RC	80				70				50				30				10				0
	70	50	30	10	70	50	30	10	50	30	10	50	30	10	50	30	10	50	30	10	0
0	85	85	85	85	76	76	76	76	57	57	57	41	41	41	25	25	25	18			
1	78	75	72	69	69	67	64	62	51	49	48	36	36	35	23	23	22	16			
2	72	66	61	57	63	59	55	52	45	43	40	33	31	30	21	20	20	14			
3	66	58	53	48	58	52	47	43	40	37	34	29	27	26	19	18	17	13			
4	60	52	45	41	53	46	41	37	36	32	29	26	24	22	17	16	15	11			
5	55	46	40	35	49	41	36	32	32	28	25	23	21	19	15	14	13	10			
6	51	41	35	30	45	37	31	27	29	25	22	21	19	17	14	13	11	9			
7	47	37	30	26	41	33	28	24	26	22	19	19	16	15	13	11	10	8			
8	43	33	27	23	38	30	24	21	23	19	17	17	15	13	11	10	9	7			
9	40	30	24	20	35	27	22	18	21	17	15	15	13	11	10	9	8	6			
10	37	27	21	18	33	24	19	16	19	15	13	14	12	10	9	8	7	5			

### White Enamel Baffle

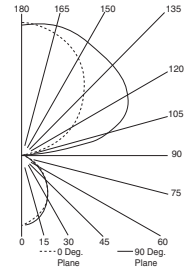
**Catalog Number:** LMSI/D02-PH-SE-4-C-BW-F01M-120-T5HO

**Report Number:** LTL#08690.ies

**Luminaire Description:** Extruded Aluminum Housing with Specular Aluminum Reflector and White Enamel Aluminum Baffle Open Top

**Lamps:** Two Philips F54T5/841/HO Rated at 4400 Lumens Each

Total Luminaire Efficiency = 86.6%  
79% Up 21% Down



### CANDELA DISTRIBUTION

	0.0	22.5	45.0	67.5	90.0	LUMENS
0	785	785	785	785	785	
5	772	777	780	777	779	74
15	706	712	720	726	731	203
25	613	616	619	626	635	286
35	503	503	497	499	513	314
45	383	379	367	364	376	287
55	258	254	240	228	231	216
65	120	130	125	117	114	123
75	57	58	58	59	60	62
85	15	15	15	15	16	18
90	1	4	6	7	8	
95	55	245	228	177	162	234
105	268	559	826	968	991	788
115	524	727	1050	1247	1306	976
125	775	929	1150	1351	1421	1014
135	999	1113	1256	1385	1439	962
145	1184	1255	1367	1441	1470	845
155	1330	1368	1441	1490	1507	660
165	1429	1443	1475	1495	1505	416
175	1482	1478	1487	1485	1484	142
180	1482	1482	1482	1482	1482	

### COEFFICIENTS OF UTILIZATION - ZONAL CAVITY METHOD

Effective Floor Cavity Reflectance 0.20

RC	80				70				50				30				10				0
	70	50	30	10	70	50	30	10	50	30	10	50	30	10	50	30	10	50	30	10	0
0	87	87	87	87	77	77	77	77	58	58	58	41	41	41	25	25	25	18			
1	79	76	73	70	70	67	65	62	51	50	48	36	36	35	23	22	22	16			
2	73	67	62	58	64	59	55	52	45	43	40	32	31	29	21	20	19	14			
3	66	59	53	48	59	52	48	44	40	37	34	29	27	25	19	18	17	12			
4	61	52	46	41	54	46	41	37	36	32	29	26	24	22	17	16	15	11			
5	56	46	40	35	49	41	36	32	32	28	25	23	21	19	15	14	13	9			
6	51	41	35	30	45	37	32	27	29	25	22	21	18	17	14	12	11	8			
7	47	37	31	26	42	33	28	24	26	22	19	19	16	15	12	11	10	7			
8	44	34	27	23	39	30	25	21	23	20	17	17	15	13	11	10	9	6			
9	40	30	24	20	36	27	22	18	21	17	15	16	13	11	10	9	8	6			
10	37	28	22	18	33	25	20	16	19	16	13	14	12	10	9	8	7	5			

