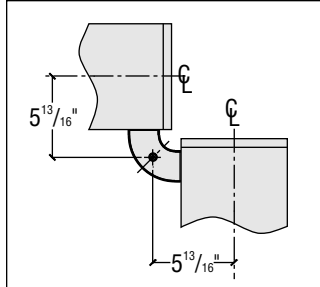


Catalog Number	Type
Project Name	

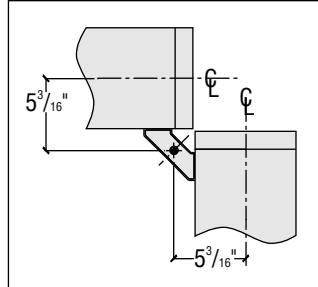
Delgada Series

Connector Specifications

S P E C I F I C A T I O N S



DCS - 90° CONNECTOR



DRS - 90° CONNECTOR

Delgada Series

Curved Housing (DCS) 7 5/8" x 2"

Rectangular Housing (DRS) 7 5/16" x 2"

Construction

One piece die-cast aluminum.

Finish

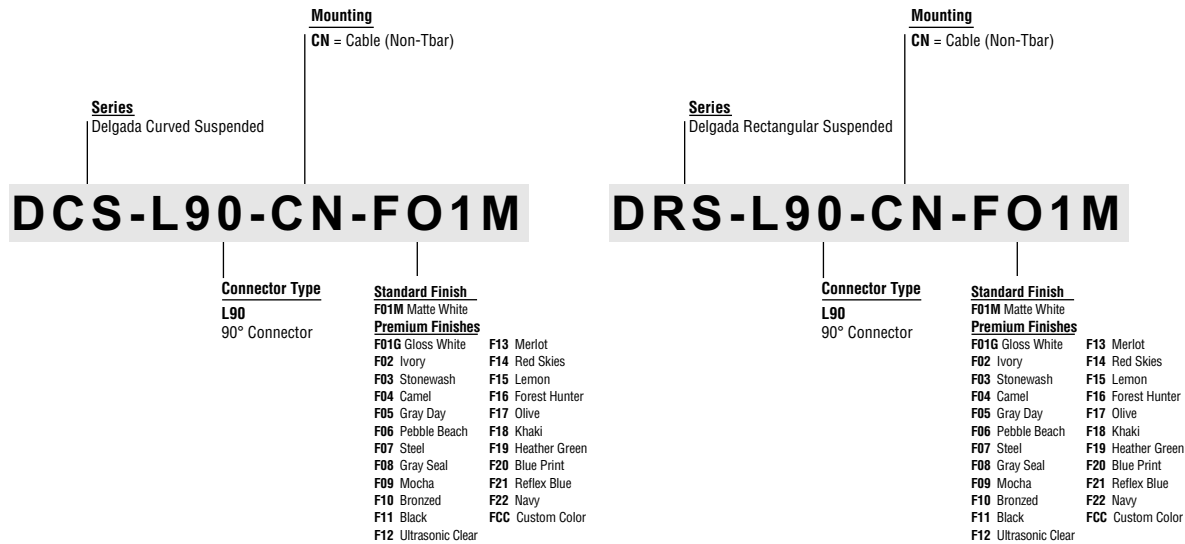
Standard and premium finishes are baked powder coat electrostatically applied (2.0 mil. minimum thickness) to assure aesthetics and durability.

H O W T O O R D E R

Standard Connectors are 2-way 90°

Catalog Logic

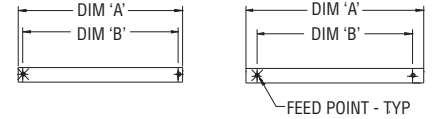
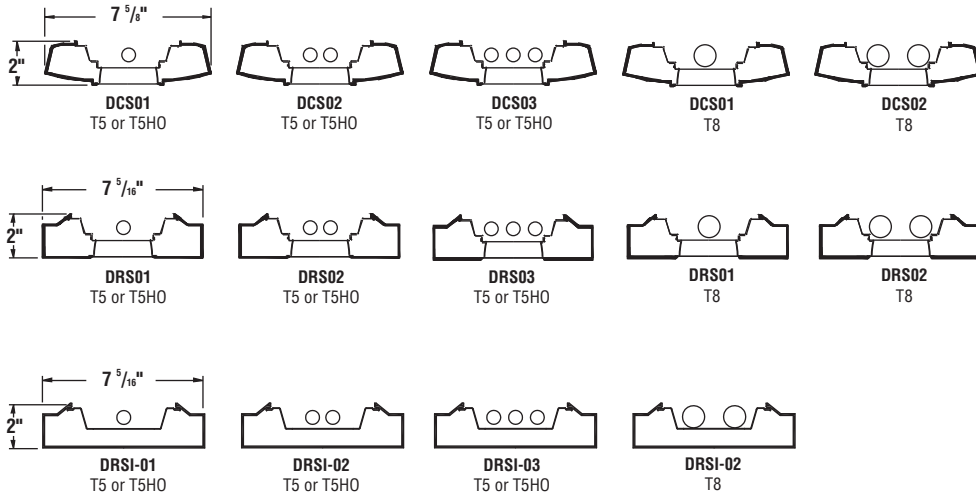
All connectors should be specified and ordered as follows:



Delgada Series

Standard Fixture Lengths and Mounting Centers

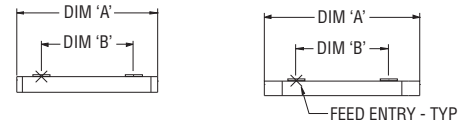
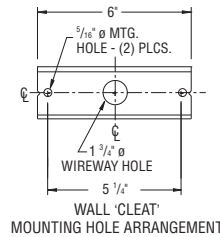
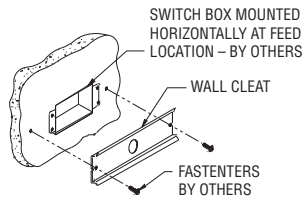
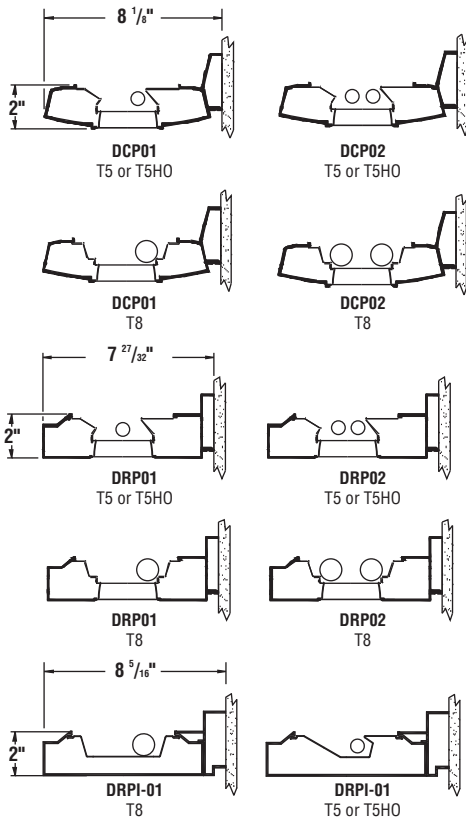
Cable Mount - Indirect/Direct Configurations



FLAT END OPTION		
DCS	MOUNTING CENTERS	DRS
FIXTURE LENGTH	DIM 'B'	FIXTURE LENGTH
DIM 'A'	DIM 'B'	DIM 'A'
49 1/4"	48"	50 1/2"
97 1/4"	96"	98 1/2"

EXTENDED END OPTION		
DCS	MOUNTING CENTERS	DRS
FIXTURE LENGTH	DIM 'B'	FIXTURE LENGTH
DIM 'A'	DIM 'B'	DIM 'A'
57"	48"	57"
105"	96"	105"

Wall Mount - Indirect/Direct Configurations



FLAT END OPTION		
DCP	MOUNTING CENTERS	DRP
FIXTURE LENGTH	DIM 'B'	FIXTURE LENGTH
DIM 'A'	DIM 'B'	DIM 'A'
49 1/4"	36"	50 1/2"
97 1/4"	84"	98 1/2"

EXTENDED END OPTION		
DCP	MOUNTING CENTERS	DRP
FIXTURE LENGTH	DIM 'B'	FIXTURE LENGTH
DIM 'A'	DIM 'B'	DIM 'A'
57"	36"	57"
105"	84"	105"

PAL RESERVES THE RIGHT TO CHANGE PRODUCT DESIGN AND SPECIFICATIONS. CONTACT FACTORY FOR MOST RECENT PRODUCT INFORMATION.

