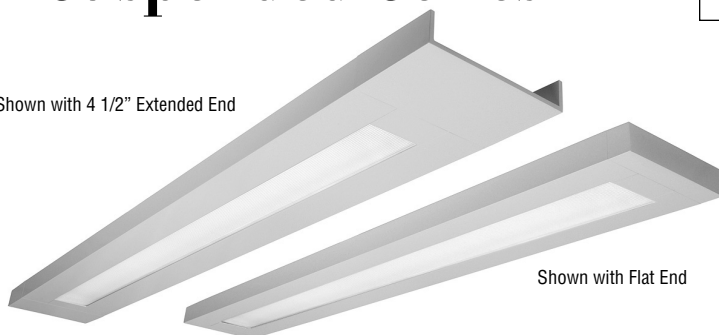


Delgada-LED™ Rectangular Suspended Series

Shown with 4 1/2" Extended End



Shown with Flat End

S P E C I F I C A T I O N S

Housing

Two-piece .080" thick extruded aluminum. Standard lengths are 4' and 8'. Provisions may be made for patterns and continuous rows of any length.

End Caps

- (FE) Flat End – .100" thick die-cast aluminum finished to match fixture housing and secured with no visible fasteners
- (XE) 4 1/2" Extended End – .100" thick die-cast aluminum finished to match fixture housing and secured with no visible fasteners

Finish

Standard and premium finishes are baked powder coat electrostatically applied (2.0 mil minimum thickness) to assure aesthetics and durability. Standard finish for stems and canopies is white.

Indirect Optical Controls

- (OC0) Reflector - Nominal 0% ↑ 100% ↓
- (OC2) Reflector - Nominal 25% ↑ 75% ↓
- (OC4) Reflector - Nominal 40% ↑ 60% ↓
- (OC6) Reflector - Nominal 60% ↑ 40% ↓

Direct Optical Control

- (LOH) Linear Micro-Prismatic Lens - formulated for LED diffusion and maximum light transmission.

Reflector / Heat Sink

.040" thick aluminum finished with a low gloss/ high reflectance baked white powder coat.

Light Engine

Osram-Sylvania LED modules available for 3000K, 3500K, and 4000K CCT, in high and medium light outputs.

Driver

Osram-Sylvania "Optotronic" power supply is UL/CUL recognized, 0-10V dimming available, 120-277 universal voltage. Consult factory for 347V.

Circuitry

All fixtures are factory pre-wired for a single circuit. Provision for multiple switching/circuiting is optional.

Wiring

All fixtures intended for continuous rows are provided with factory installed quick-connect wiring.

Controls

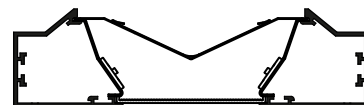
Contact factory for control by Occupancy Sensors, Photo Controls and Daylight Harvesting.

Certification

All fixtures are UL/CUL listed for use in "Dry Applications". "Damp Location" is optional.

DRS-I/D-LED

7 5/16" x 2" Indirect/Direct Susp. (LED)



Performance Data

Distribution	Output	Delivered Lumens/4'	System Watts/4'	Lumens/Watt	DLC QPL Listed
0 ↑ / 100 ↓	HO	4567	49	93	
0 ↑ / 100 ↓	MO	3020	31	99	
25 ↑ / 75 ↓	HO	4681	49	95	
25 ↑ / 75 ↓	MO	3089	31	101	
40 ↑ / 60 ↓	HO	4957	49	101	
40 ↑ / 60 ↓	MO	3280	31	108	Yes
60 ↑ / 40 ↓	HO	5616	49	114	Yes
60 ↑ / 40 ↓	MO	3711	31	121	Yes

DRS-I/D-XE-HO-K35-8-CT-OC6/LOH-FO1M-V-[]

Lumen Output

HO - *High Output
MO - *Medium Output

*See Performance Data Chart Above

Indirect Optical Controls

OC0 = 0% ↑ 100% ↓
OC2 = 25% ↑ 75% ↓
OC4 = 40% ↑ 60% ↓
OC6 = 60% ↑ 40% ↓

Direct Optical Controls

LOH
Linear Micro-Prismatic
Lens - LED

Standard Finishes

FO1M Matte White
Premium Finishes
FO1G Gloss White
FO2 Ivory
FO3 Stonewash
FO4 Camel
FO5 Gray Day
FO6 Pebble Beach
FO7 Steel
FO8 Gray Seal
FO9 Mocha
FO10 Bronze d
FO11G Gloss Black
F11M Matte Black
F12 Ultrasonic Clear
F13 Merlot
F14 Red Skies
F15 Lemon
F16 Forest Hunter
F20 Blue Print
F21 Reflex Blue
F22 Navy
FCC Custom Color

Voltage

120
277
UNV

Options

NLCKT
Separate Night Light Circuit
EMCKT
Separate Emergency Circuit
EBPL
Emergency Battery Pack
(6 Watts)
EBPH
Emergency Battery Pack
(10 Watts)
Dim
Dimming
DL
Damp Location

FS
Fused Drivers
GTD
Generator Transfer Device
DC
Dust Cover
DS
Integral Mount
Daylight Sensor
OS
Integral Mount
Occupancy Sensor



Precision Architectural Lighting 4830 Timber Creek Drive Houston, Texas 77017
Tel 713.946.4343 Fax 713.946.4441 www.pal-lighting.com



Made in America

Suspended

DRS-I/D-HO-K40-OC0/LOH

High Output - Direct Only

LED Optimized Linear Micro-Prismatic Lens

Catalog Number: DRS-I/D-XX-HO-K40-4'-X-OC0/LOH-120

Report Number: LLIA#000537-013.ies

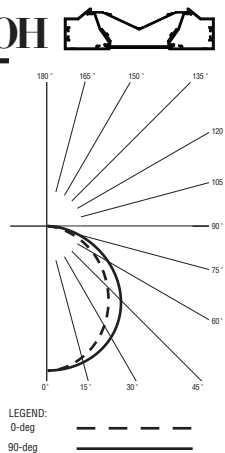
Luminaire Description: Extruded Aluminum Housing with White Aluminum Reflector and LED Optimized Linear Micro-Prismatic Lens

LED Module: Multiple White Low-Power Light Emitting Diodes (LEDs) in a precise lay-out.

Total Luminaire Efficacy = 92.6 Lm/W

Color Rendering Index (CRI) = 82

0% Up 100% Down



lighting facts®	
A Program of the U.S. DOE	
Light Output (Lumens)	4567
Watts	49.3
Lumens per Watt (Efficacy)	92.6
Color Accuracy	82
Color Rendering Index (CRI)	
Light Color	3991 (Bright White)
Correlated Color Temperature (CCT)	
Warm White	Bright White
2700K	3000K
4500K	6500K
All results are according to IESNA LM-79-2008. Approved Method for the Electrical and Photometric Testing of Solid-State Lighting. The U.S. Department of Energy (DOE) verifies product test data and results.	
Visit www.lightingfacts.com for the Label Reference Guide.	
Registration Number: INRP-4CT83V (2/22/2016)	
Model Number: DRS-I/D-HO-K40-4'-X-OC0/LOH-X-120	
Type: Luminaire - Linear	

DRS-I/D-MO-K40-OC0/LOH

Medium Output - Direct Only

LED Optimized Linear Micro-Prismatic Lens

Catalog Number: DRS-I/D-XX-MO-K40-4'-X-OC0/LOH-120

Report Number: LLIA#000537-011.ies

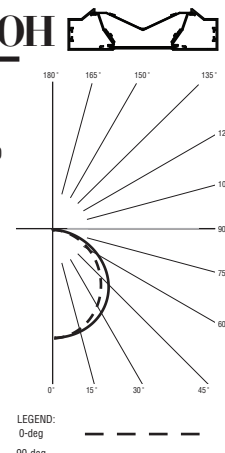
Luminaire Description: Extruded Aluminum Housing with White Aluminum Reflector and LED Optimized Linear Micro-Prismatic Lens

LED Module: Multiple White Low-Power Light Emitting Diodes (LEDs) in a precise lay-out.

Total Luminaire Efficacy = 99.0 Lm/W

Color Rendering Index (CRI) = 83

0% Up 100% Down



lighting facts®	
A Program of the U.S. DOE	
Light Output (Lumens)	3020
Watts	30.53
Lumens per Watt (Efficacy)	99
Color Accuracy	83
Color Rendering Index (CRI)	
Light Color	3985 (Bright White)
Correlated Color Temperature (CCT)	
Warm White	Bright White
2700K	3000K
4500K	6500K
All results, except LED Lumen Maintenance, are according to IESNA LM-79-2008. Approved Method for the Electrical and Photometric Testing of Solid-State Lighting. The U.S. Department of Energy (DOE) verifies product test data and results.	
** See www.lightingfacts.com/products for details.	
Registration Number: INRP-HKSL91 (2/23/2016)	
Model Number: DRS-I/D-MO-K40-4'-X-OC0/LOH-X-120	
Type: Luminaire - Linear	

DRS-I/D-HO-K40-OC2/LOH

High Output - Indirect/Direct

LED Optimized Linear Micro-Prismatic Lens

Catalog Number: DRS-I/D-XX-HO-K40-4'-X-OC2/LOH-120

Report Number: LLIA#000537-015.ies

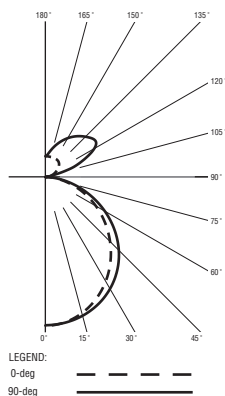
Luminaire Description: Extruded Aluminum Housing with White Aluminum Reflector and LED Optimized Linear Micro-Prismatic Lens

LED Module: Multiple White Low-Power Light Emitting Diodes (LEDs) in a precise lay-out.

Total Luminaire Efficacy = 94.9 Lm/W

Color Rendering Index (CRI) = 82

28% Up 72% Down



lighting facts®	
A Program of the U.S. DOE	
Light Output (Lumens)	4681
Watts	49.3
Lumens per Watt (Efficacy)	94.9
Color Accuracy	82
Color Rendering Index (CRI)	
Light Color	4028 (Bright White)
Correlated Color Temperature (CCT)	
Warm White	Bright White
2700K	3000K
4500K	6500K
All results are according to IESNA LM-79-2008. Approved Method for the Electrical and Photometric Testing of Solid-State Lighting. The U.S. Department of Energy (DOE) verifies product test data and results.	
Visit www.lightingfacts.com for the Label Reference Guide.	
Registration Number: INRP-SVWQDA (2/22/2016)	
Model Number: DRS-I/D-HO-K40-4'-X-OC2/LOH-X-120	
Type: Luminaire - Linear	

DRS-I/D-MO-K40-OC2/LOH

Medium Output - Indirect/Direct

LED Optimized Linear Micro-Prismatic Lens

Catalog Number: DRS-I/D-XX-MO-K40-4'-X-OC2/LOH-120

Report Number: LLIA#000537-009.ies

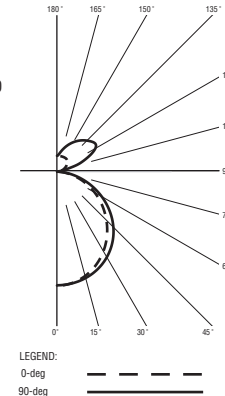
Luminaire Description: Extruded Aluminum Housing with White Aluminum Reflector and LED Optimized Linear Micro-Prismatic Lens

LED Module: Multiple White Low-Power Light Emitting Diodes (LEDs) in a precise lay-out.

Total Luminaire Efficacy = 100.9 Lm/W

Color Rendering Index (CRI) = 82

28% Up 72% Down



lighting facts®	
A Program of the U.S. DOE	
Light Output (Lumens)	3089
Watts	30.54
Lumens per Watt (Efficacy)	100.9
Color Accuracy	82
Color Rendering Index (CRI)	
Light Color	4025 (Bright White)
Correlated Color Temperature (CCT)	
Warm White	Bright White
2700K	3000K
4500K	6500K
All results, except LED Lumen Maintenance, are according to IESNA LM-79-2008. Approved Method for the Electrical and Photometric Testing of Solid-State Lighting. The U.S. Department of Energy (DOE) verifies product test data and results.	
** See www.lightingfacts.com/products for details.	
Registration Number: INRP-KCSAB8 (2/23/2016)	
Model Number: DRS-I/D-MO-K40-4'-X-OC2/LOH-X-120	
Type: Luminaire - Linear	



Precision Architectural Lighting 4830 Timber Creek Drive Houston, Texas 77017
Tel 713.946.4343 Fax 713.946.4441 www.pal-lighting.com



Made in America

For more information, visit our website at www.pal-lighting.com

Suspended

DRS-I/D-HO-K40-OC4/LOH



High Output - Indirect/Direct

LED Optimized Linear Micro-Prismatic Lens

Catalog Number: DRS-I/D-XX-HO-K40-4'-X-OC4/LOH-120

Report Number: LLIA#000537-017.ies

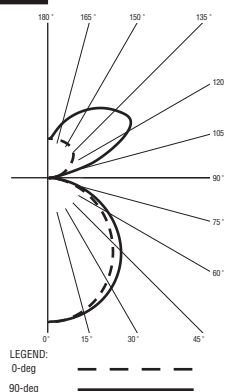
Luminaire Description: Extruded Aluminum Housing with White Aluminum Reflector and LED Optimized Linear Micro-Prismatic Lens

LED Module: Multiple White Low-Power Light Emitting Diodes (LEDs) in a precise lay-out.

Total Luminaire Efficacy = 100.5 Lm/W

Color Rendering Index (CRI) = 82

40% Up 60% Down



lighting facts®	
A Program of the U.S. DOE	
Light Output (Lumens)	4957
Watts	49.3
Lumens per Watt (Efficacy)	100.5
Color Accuracy	82
Color Rendering Index (CRI)	
Light Color	4018 (Bright White)
Correlated Color Temperature (CCT)	
Warm White	Bright White
2700K	3000K
4500K	6500K
All results are according to IESNA LM-79-2008. Approved Method for the Electrical and Photometric Testing of Solid-State Lighting. The U.S. Department of Energy (DOE) verifies product test data and results.	
Visit www.lightingfacts.com for the Label Reference Guide.	
Registration Number: INRP-10KXN2 (2/22/2016)	
Model Number: DRS-I/D-HO-K40-4'-X-OC4/LOH-X-120	
Type: Luminaire - Linear	

DRS-I/D-MO-K40-OC4/LOH



Medium Output - Indirect/Direct

LED Optimized Linear Micro-Prismatic Lens

Catalog Number: DRS-I/D-XX-MO-K40-4'-X-OC4/LOH-120

Report Number: LLIA#000537-007.ies

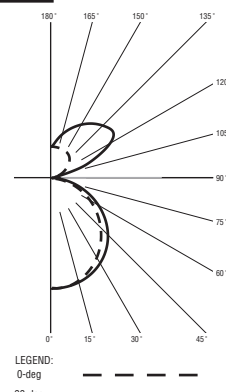
Luminaire Description: Extruded Aluminum Housing with White Aluminum Reflector and LED Optimized Linear Micro-Prismatic Lens

LED Module: Multiple White Low-Power Light Emitting Diodes (LEDs) in a precise lay-out.

Total Luminaire Efficacy = 107.5 Lm/W

Color Rendering Index (CRI) = 82

40% Up 60% Down



lighting facts®	
A Program of the U.S. DOE	
Light Output (Lumens)	3280
Watts	30.55
Lumens per Watt (Efficacy)	107.5
Color Accuracy	82
Color Rendering Index (CRI)	
Light Color	4014 (Bright White)
Correlated Color Temperature (CCT)	
Warm White	Bright White
2700K	3000K
4500K	6500K
All results are according to IESNA LM-79-2008. Approved Method for the Electrical and Photometric Testing of Solid-State Lighting. The U.S. Department of Energy (DOE) verifies product test data and results.	
Visit www.lightingfacts.com for the Label Reference Guide.	
Registration Number: INRP-MPM1 JK (2/23/2016)	
Model Number: DRS-I/D-MO-K40-4'-X-OC4/LOH-X-120	
Type: Luminaire - Linear	



DRS-I/D-HO-K40-OC6/LOH



High Output - Indirect/Direct

LED Optimized Linear Micro-Prismatic Lens

Catalog Number: DRS-I/D-XX-HO-K40-4'-X-OC6/LOH-120

Report Number: LLIA#000537-019.ies

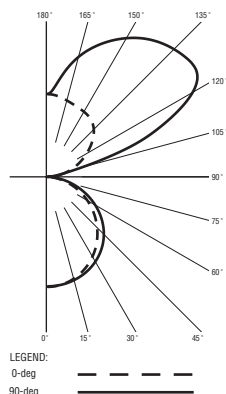
Luminaire Description: Extruded Aluminum Housing with White Aluminum Reflector and LED Optimized Linear Micro-Prismatic Lens

LED Module: Multiple White Low-Power Light Emitting Diodes (LEDs) in a precise lay-out.

Total Luminaire Efficacy = 113.7 Lm/W

Color Rendering Index (CRI) = 82

62% Up 38% Down



lighting facts®	
A Program of the U.S. DOE	
Light Output (Lumens)	5616
Watts	49.4
Lumens per Watt (Efficacy)	113.7
Color Accuracy	82
Color Rendering Index (CRI)	
Light Color	4012 (Bright White)
Correlated Color Temperature (CCT)	
Warm White	Bright White
2700K	3000K
4500K	6500K
All results are according to IESNA LM-79-2008. Approved Method for the Electrical and Photometric Testing of Solid-State Lighting. The U.S. Department of Energy (DOE) verifies product test data and results.	
Visit www.lightingfacts.com for the Label Reference Guide.	
Registration Number: INRP-USOPL3 (2/22/2016)	
Model Number: DRS-I/D-HO-K40-4'-X-OC6/LOH-X-120	
Type: Luminaire - Linear	



DRS-I/D-MO-K40-OC6/LOH



Medium Output - Indirect/Direct

LED Optimized Linear Micro-Prismatic Lens

Catalog Number: DRS-I/D-XX-MO-K40-4'-X-OC6/LOH-120

Report Number: LLIA#000537-005.ies

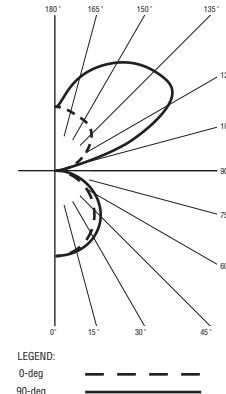
Luminaire Description: Extruded Aluminum Housing with White Aluminum Reflector and LED Optimized Linear Micro-Prismatic Lens

LED Module: Multiple White Low-Power Light Emitting Diodes (LEDs) in a precise lay-out.

Total Luminaire Efficacy = 121.3 Lm/W

Color Rendering Index (CRI) = 83

62% Up 38% Down



lighting facts®	
A Program of the U.S. DOE	
Light Output (Lumens)	3711
Watts	30.54
Lumens per Watt (Efficacy)	121.3
Color Accuracy	83
Color Rendering Index (CRI)	
Light Color	4007 (Bright White)
Correlated Color Temperature (CCT)	
Warm White	Bright White
2700K	3000K
4500K	6500K
Warranty**	Yes
All results, except LED Lumen Maintenance, are according to IESNA LM-79-2008. Approved Method for the Electrical and Photometric Testing of Solid-State Lighting. The U.S. Department of Energy (DOE) verifies product test data and results.	
** See www.lightingfacts.com/products for details.	
Registration Number: INRP-TER1K8 (2/23/2016)	
Model Number: DRS-I/D-MO-K40-4'-X-OC6/LOH-X-120	
Type: Luminaire - Linear	



Precision Architectural Lighting 4830 Timber Creek Drive Houston, Texas 77017
Tel 713.946.4343 Fax 713.946.4441 www.pal-lighting.com

For more information, visit our website at www.pal-lighting.com



Made in America