



**LUMINAIRE TESTING LABORATORY, INC.**

SUSTAINING  
MEMBER  
of the  
IESNA

905 Harrison Street · Allentown, PA 18103 · 610-770-1044 · Fax 610-770-8912 · www.LuminaireTesting.com

LTL NUMBER: 13289

DATE: 05-22-2008

PREPARED FOR: PRECISION ARCHITECTURAL LIGHTING

CATALOG NUMBER: DRSI-03-X-4-X-X-120-T5HO

LUMINAIRE: EXTRUDED ALUMINUM HOUSING, FORMED WHITE ENAMEL ALUMINUM REFLECTOR WITH SPECULAR ALUMINUM SIDES, OPEN TOP.

LAMP: THREE 54 WATT HIGH OUTPUT T5 LINEAR FLUORESCENT LAMPS RATED AT 4400 LUMENS EACH.

LAMP CATALOG NUMBER: PHILIPS F54T5/835/HO/ALTO

BALLASTS: TWO UNIVERSAL LIGHTING TECHNOLOGIES B254PUNV-D

MOUNTING: PENDANT

LUMEN TO CANDELA RATIO USED = 9.18

TOTAL INPUT WATTS =172.0 AT 120.0 VOLTS

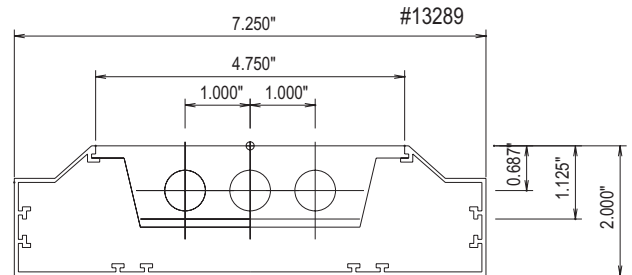
THE 0 DEGREE PLANE IS PARALLEL WITH THE LAMPS.

**CANDELA DISTRIBUTION**

	0.0	22.5	45.0	67.5	90.0
90	0	0	0	0	0
95	124	108	39	12	14
105	589	868	682	561	532
115	1106	1609	1617	1478	1417
125	1605	2055	2394	2416	2384
135	2042	2377	2810	3014	3042
145	2407	2619	2964	3204	3275
155	2693	2801	3021	3170	3229
165	2893	2931	3033	3099	3122
175	2989	2987	3012	3008	3001
180	2994	2994	2994	2994	2994

**FLUX**

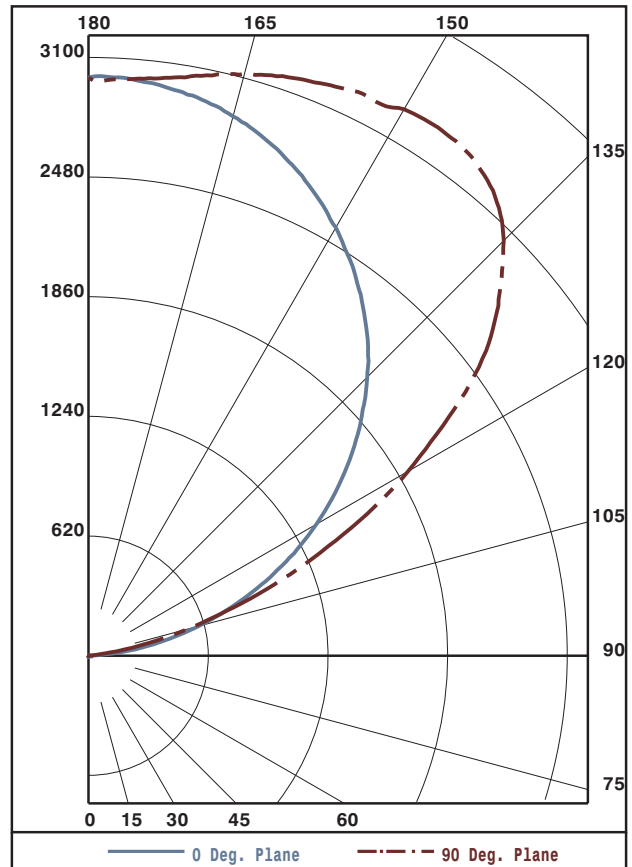
94
707
1475
1975
2069
1823
1382
855
287



**ZONAL LUMEN SUMMARY**

ZONE	LUMENS	%LAMP	%FIXT
0- 90	0	0.0	0.0
90-120	2276	17.2	21.3
90-130	4251	32.2	39.9
90-150	8143	61.7	76.3
90-180	10667	80.8	100.0
0-180	10667	80.8	100.0

TOTAL LUMINAIRE EFFICIENCY: 80.8%  
 TOTAL REFLECTANCE OF PAINT: 88.6%  
 CIE TYPE: INDIRECT



Approved By: MG



LUMINAIRE TESTING LABORATORY, INC.

SUSTAINING MEMBER of the IESNA

905 Harrison Street · Allentown, PA 18103 · 610-770-1044 · Fax 610-770-8912 · www.LuminaireTesting.com

LTL NUMBER: 13289

DATE: 05-22-2008

PREPARED FOR: PRECISION ARCHITECTURAL LIGHTING

COEFFICIENTS OF UTILIZATION - ZONAL CAVITY METHOD
EFFECTIVE FLOOR CAVITY REFLECTANCE 0.20

Table with columns RC, RW, and rows for 80, 70, 50, 30, 10, 0. Values range from 0 to 77.

CANDELA DISTRIBUTION

Table with columns 0.0, 22.5, 45.0, 67.5, 90.0 and rows 90 to 180. Values range from 0 to 2994.

ZONAL LUMEN SUMMARY

Table with columns 90-95, 95-100, 100-105, 105-110, 110-115, 115-120, 120-125, 125-130, 130-135, 135-140, 140-145, 145-150, 150-155, 155-160, 160-165, 165-170, 170-175, 175-180. Values range from 72 to 256.

THIS TEST WAS CONDUCTED USING RELATIVE PHOTOMETRY TECHNIQUES ACCORDING TO STANDARD IESNA PROCEDURES. THE USER MUST THEREFORE USE CAUTION IN THE FOLLOWING SITUATIONS: 1) THIS TEST WAS PERFORMED USING A SPECIFIC BALLAST/LAMP COMBINATION. EXTRAPOLATION OF THESE DATA FOR OTHER BALLAST/LAMP COMBINATIONS MAY PRODUCE ERRONEOUS RESULTS. 2) ACCORDING TO IESNA PROCEDURES, THE BALLAST(S) AND LAMP(S) ARE PRESUMED TO PRODUCE 100% OF RATED OUTPUT. AN APPROPRIATE BALLAST FACTOR MUST BE APPLIED TO THE LUMEN OUTPUT RATINGS AND LUMINOUS INTENSITY VALUES GIVEN. 3) THIS TEST WAS CONDUCTED IN A CONTROLLED LABORATORY ENVIRONMENT WHERE THE AMBIENT TEMPERATURE WAS HELD AT 25°C ±1°C. FIELD PERFORMANCE MAY DIFFER PARTICULARLY IN REGARDS TO CHANGE IN LUMINOUS OUTPUT AS A RESULT OF DIFFERENCE IN AMBIENT TEMPERATURE AND METHOD OF MOUNTING THE LUMINAIRE.