



**LUMINAIRE TESTING LABORATORY, INC.**

SUSTAINING  
MEMBER  
of the  
IESNA

905 Harrison Street · Allentown, PA 18103 · 610-770-1044 · Fax 610-770-8912 · www.LuminaireTesting.com

LTL NUMBER: 13290 DATE: 05-22-2008  
 PREPARED FOR: PRECISION ARCHITECTURAL LIGHTING  
 CATALOG NUMBER: DRSI-02-X-4-X-X-120-T5HO  
 LUMINAIRE: EXTRUDED ALUMINUM HOUSING, FORMED WHITE ENAMEL ALUMINUM REFLECTOR WITH SPECULAR ALUMINUM SIDES, OPEN TOP.  
 LAMP: TWO 54 WATT HIGH OUTPUT T5 LINEAR FLUORESCENT LAMPS RATED AT 4400 LUMENS EACH.  
 LAMP CATALOG NUMBER: PHILIPS FP54T5/835/HO/ALTO  
 BALLAST: ONE UNIVERSAL LIGHTING TECHNOLOGIES B254PUNV-D  
 MOUNTING: PENDANT

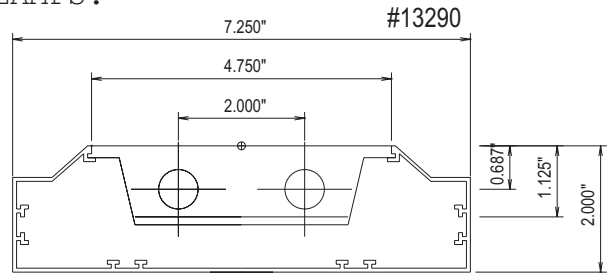
LUMEN TO CANDELA RATIO USED = 9.18  
 TOTAL INPUT WATTS = 115.0 AT 120.0 VOLTS  
 THE 0 DEGREE PLANE IS PARALLEL WITH THE LAMPS.

CANDELA DISTRIBUTION

	0.0	22.5	45.0	67.5	90.0
90	0	0	0	0	0
95	79	128	47	22	21
105	378	693	636	590	576
115	712	1106	1280	1243	1220
125	1034	1355	1706	1839	1844
135	1310	1539	1876	2093	2142
145	1537	1675	1934	2121	2181
155	1716	1786	1937	2052	2102
165	1843	1866	1936	1980	1993
175	1912	1904	1920	1918	1912
180	1909	1909	1909	1909	1909

FLUX

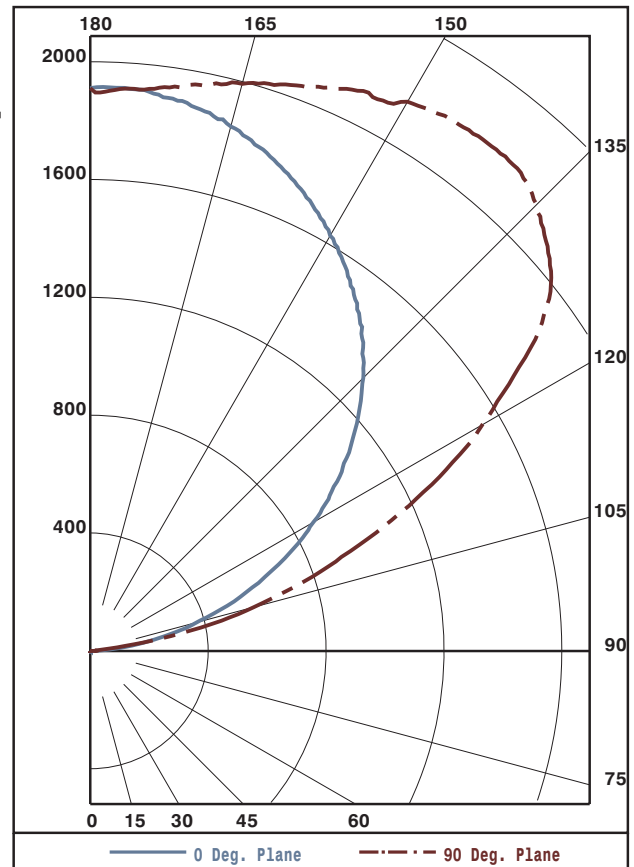
103
632
1135
1411
1395
1191
888
545
183



ZONAL LUMEN SUMMARY

ZONE	LUMENS	%LAMP	%FIXT
0-90	0	0.0	0.0
90-120	1870	21.2	25.0
90-130	3281	37.3	43.8
90-150	5867	66.7	78.4
90-180	7483	85.0	100.0
0-180	7483	85.0	100.0

TOTAL LUMINAIRE EFFICIENCY: 85.0%  
 TOTAL REFLECTANCE OF PAINT: 88.6%  
 CIE TYPE: INDIRECT



Approved By: MG



LUMINAIRE TESTING LABORATORY, INC.

SUSTAINING MEMBER of the IESNA

905 Harrison Street · Allentown, PA 18103 · 610-770-1044 · Fax 610-770-8912 · www.LuminaireTesting.com

LTL NUMBER: 13290

DATE: 05-22-2008

PREPARED FOR: PRECISION ARCHITECTURAL LIGHTING

COEFFICIENTS OF UTILIZATION - ZONAL CAVITY METHOD
EFFECTIVE FLOOR CAVITY REFLECTANCE 0.20

Table with 18 columns (RC, RW, 80, 70, 50, 30, 10, 0) and 11 rows of utilization coefficients.

CANDELA DISTRIBUTION

Table with 6 columns of candela values ranging from 0.0 to 1909.

ZONAL LUMEN SUMMARY

Table with 2 columns of zonal lumen values for various ranges from 90-95 to 175-180.

THIS TEST WAS CONDUCTED USING RELATIVE PHOTOMETRY TECHNIQUES ACCORDING TO STANDARD IESNA PROCEDURES. THE USER MUST THEREFORE USE CAUTION IN THE FOLLOWING SITUATIONS: 1) THIS TEST WAS PERFORMED USING A SPECIFIC BALLAST/LAMP COMBINATION. EXTRAPOLATION OF THESE DATA FOR OTHER BALLAST/LAMP COMBINATIONS MAY PRODUCE ERRONEOUS RESULTS. 2) ACCORDING TO IESNA PROCEDURES, THE BALLAST(S) AND LAMP(S) ARE PRESUMED TO PRODUCE 100% OF RATED OUTPUT. AN APPROPRIATE BALLAST FACTOR MUST BE APPLIED TO THE LUMEN OUTPUT RATINGS AND LUMINOUS INTENSITY VALUES GIVEN. 3) THIS TEST WAS CONDUCTED IN A CONTROLLED LABORATORY ENVIRONMENT WHERE THE AMBIENT TEMPERATURE WAS HELD AT 25°C ±1°C. FIELD PERFORMANCE MAY DIFFER PARTICULARLY IN REGARDS TO CHANGE IN LUMINOUS OUTPUT AS A RESULT OF DIFFERENCE IN AMBIENT TEMPERATURE AND METHOD OF MOUNTING THE LUMINAIRE.