



LUMINAIRE TESTING LABORATORY, INC.

SUSTAINING
MEMBER
of the
IESNA

905 Harrison Street · Allentown, PA 18103 · 610-770-1044 · Fax 610-770-8912 · www.LuminaireTesting.com

LTL NUMBER: 10338

DATE: 10-02-2006

PREPARED FOR: PRECISION ARCHITECTURAL LIGHTING

CATALOG NUMBER: 0505S-02-R-4-OP/PRFP-X-120T5HO

LUMINAIRE: EXTRUDED ALUMINUM HOUSING, FORMED SPECULAR ALUMINUM REFLECTORS, FROSTED PATTERNED ACRYLIC LOWER ENCLOSURE, OPEN TOP.

LAMPS: TWO 54 WATT HIGH OUTPUT T5 LINEAR FLUORESCENT LAMPS RATED AT 4400 LUMENS EACH.

LAMP CATALOG NUMBER: PHILIPS F54T5/841/HO/ECO/ALTO

BALLAST: ONE UNIVERSAL LIGHTING TECHNOLOGIES B254PUNV-D

MOUNTING: PENDANT

LUMEN TO CANDELA RATIO USED = 9.18

TOTAL INPUT WATTS = 116.1 AT 120.0 VOLTS

THE 0 DEGREE PLANE IS PARALLEL WITH THE LAMPS.

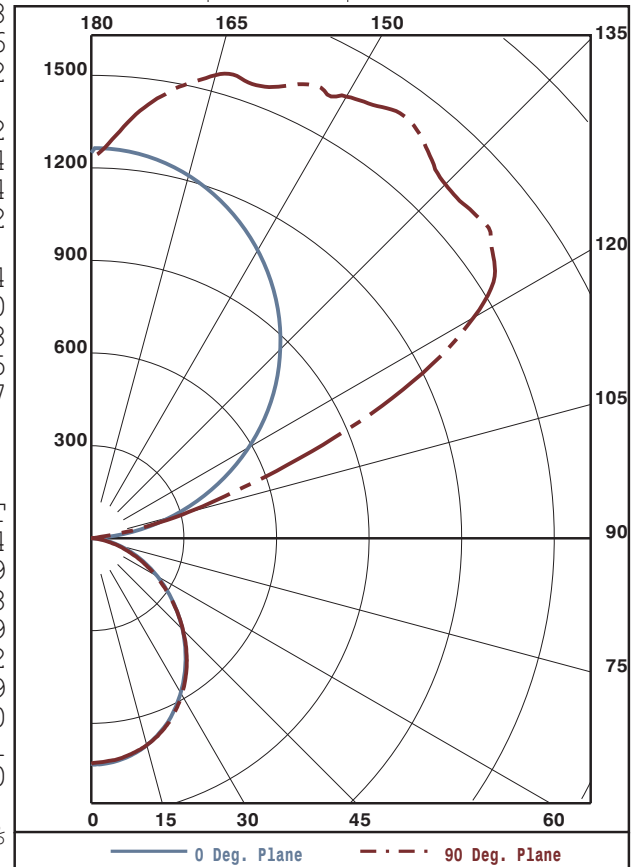
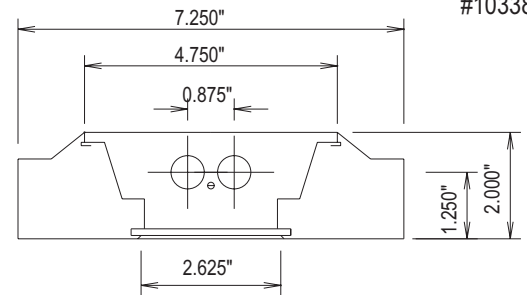
#10338

CANDELA DISTRIBUTION

	0.0	22.5	45.0	67.5	90.0
0	731	731	731	731	731
5	730	727	729	724	724
15	695	692	696	693	694
25	625	624	630	629	630
35	528	529	535	535	535
45	417	417	421	420	419
55	302	302	303	299	297
65	194	193	191	186	184
75	96	95	91	86	84
85	24	22	18	15	15
90	2	1	1	0	0
95	64	61	11	13	13
105	269	562	464	349	323
115	485	808	1118	1119	1075
125	689	994	1277	1515	1590
135	866	1137	1444	1568	1622
145	1014	1278	1481	1629	1696
155	1133	1339	1489	1571	1624
165	1217	1339	1468	1530	1554
175	1260	1268	1316	1344	1353
180	1250	1250	1250	1250	1250

FLUX

69
196
289
333
324
270
188
96
22
52
444
934
1102
1044
900
668
405
127
84.8%



ZONAL LUMEN SUMMARY

ZONE	LUMENS	%LAMP	%FIXT
0- 30	554	6.3	7.4
0- 40	887	10.1	11.9
0- 60	1481	16.8	19.8
0- 90	1786	20.3	23.9
90-120	1431	16.3	19.2
90-130	2533	28.8	33.9
90-150	4476	50.9	60.0
90-180	5676	64.5	76.1
0-180	7463	84.8	100.0

TOTAL LUMINAIRE EFFICIENCY:

CIE TYPE: SEMI-INDIRECT

PLANE: 0-DEG 90-DEG

SPACING CRITERIA: 1.2 1.2

Approved By: MG

THIS REPORT BASED ON LM-41 AND OTHER PERTINENT IESNA PROCEDURES.



LUMINAIRE TESTING LABORATORY, INC.

SUSTAINING MEMBER of the IESNA

905 Harrison Street · Allentown, PA 18103 · 610-770-1044 · Fax 610-770-8912 · www.LuminaireTesting.com

LTL NUMBER: 10338

DATE: 10-02-2006

PREPARED FOR: PRECISION ARCHITECTURAL LIGHTING

COEFFICIENTS OF UTILIZATION - ZONAL CAVITY METHOD
EFFECTIVE FLOOR CAVITY REFLECTANCE 0.20

Table with 18 columns (RC, RW, 80, 70, 50, 30, 10, 0) and 11 rows of utilization coefficients.

PLANE: 0-DEG 90-DEG
LUMINOUS LENGTH: 44.375 2.625

LUMINANCE IN CANDELA PER SQUARE METER

Table with 4 columns (ANGLE IN DEG, AVERAGE 0-DEG, AVERAGE 45-DEG, AVERAGE 90-DEG) and 6 rows of luminance values.



LUMINAIRE TESTING LABORATORY, INC.

SUSTAINING MEMBER of the IESNA

905 Harrison Street · Allentown, PA 18103 · 610-770-1044 · Fax 610-770-8912 · www.LuminaireTesting.com

LTL NUMBER: 10338
PREPARED FOR: PRECISION ARCHITECTURAL LIGHTING

DATE: 10-02-2006

CANDELA DISTRIBUTION

Table with 6 columns representing candela values at various distances (0.0, 22.5, 45.0, 67.5, 90.0) for distances from 0 to 180.

ZONAL LUMEN SUMMARY

Table with 2 columns representing zonal lumen values for distance ranges from 0-5 to 175-180.

THIS TEST WAS CONDUCTED USING RELATIVE PHOTOMETRY TECHNIQUES ACCORDING TO STANDARD IESNA PROCEDURES. THE USER MUST THEREFORE USE CAUTION IN THE FOLLOWING SITUATIONS: 1) THIS TEST WAS PERFORMED USING A SPECIFIC BALLAST/LAMP COMBINATION. EXTRAPOLATION OF THESE DATA FOR OTHER BALLAST/LAMP COMBINATIONS MAY PRODUCE ERRONEOUS RESULTS. 2) ACCORDING TO IESNA PROCEDURES, THE BALLAST(S) AND LAMP(S) ARE PRESUMED TO PRODUCE 100% OF RATED OUTPUT. AN APPROPRIATE BALLAST FACTOR MUST BE APPLIED TO THE LUMEN OUTPUT RATINGS AND LUMINOUS INTENSITY VALUES GIVEN. 3) THIS TEST WAS CONDUCTED IN A CONTROLLED LABORATORY ENVIRONMENT WHERE THE AMBIENT TEMPERATURE WAS HELD AT 25°C ±1°C. FIELD PERFORMANCE MAY DIFFER PARTICULARLY IN REGARDS TO CHANGE IN LUMINOUS OUTPUT AS A RESULT OF DIFFERENCE IN AMBIENT TEMPERATURE AND METHOD OF MOUNTING THE LUMINAIRE.