



LUMINAIRE TESTING LABORATORY, INC.

SUSTAINING
MEMBER
of the
IESNA

905 Harrison Street · Allentown, PA 18103 · 610-770-1044 · Fax 610-770-8912 · www.LuminaireTesting.com

LTL NUMBER: 10336 DATE: 09-20-2006
 PREPARED FOR: PRECISION ARCHITECTURAL LIGHTING
 CATALOG NUMBER: 0505S-01-C-4-OP/PBW-X-120T8
 LUMINAIRE: EXTRUDED ALUMINUM HOUSING, FORMED SPECULAR ALUMINUM REFLECTORS, 29 CELL, 3/4" DEEP, FORMED WHITE ENAMEL ALUMINUM LOUVER, OPEN TOP.
 LAMPS: TWO 32 WATT T8 LINEAR FLUORESCENT LAMPS RATED AT 2850 LUMENS EACH.
 LAMP CATALOG NUMBER: PHILIPS F32T8/TL830/ALTO
 BALLAST: ONE UNIVERSAL LIGHTING TECHNOLOGIES B232IUNV-C
 MOUNTING: PENDANT
 LUMEN TO CANDELA RATIO USED = 9.18
 TOTAL INPUT WATTS = 58.2 AT 120.0 VOLTS
 THE 0 DEGREE PLANE IS PARALLEL WITH THE LAMPS.

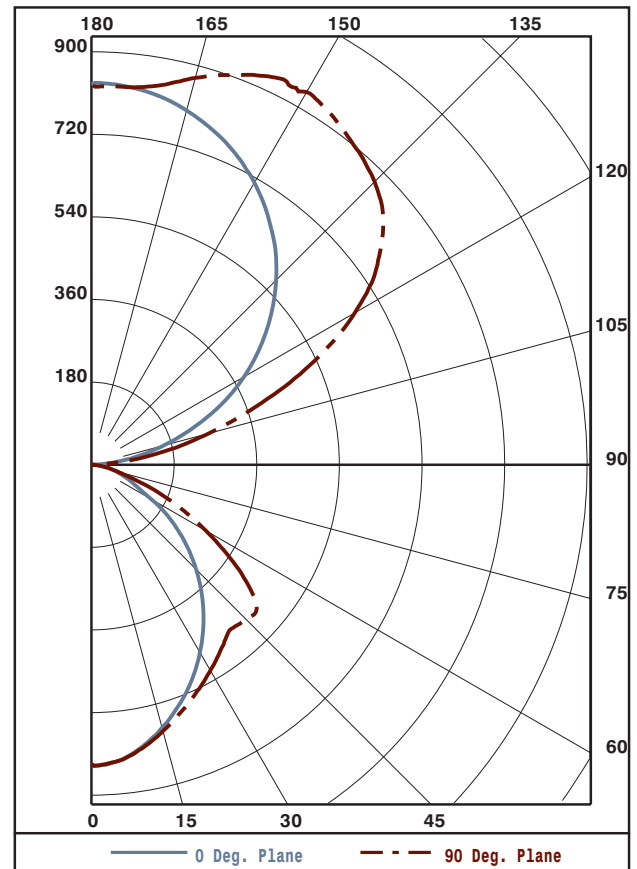
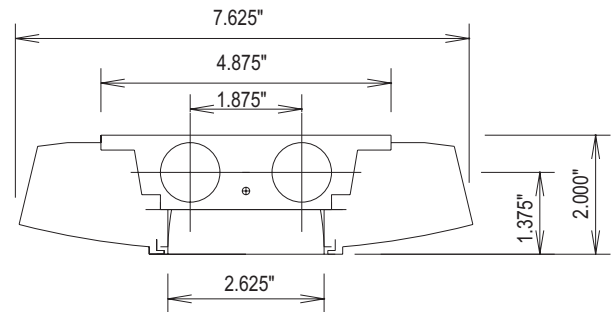
#10336

CANDELA DISTRIBUTION

	0.0	22.5	45.0	67.5	90.0
0	653	653	653	653	653
5	648	642	651	647	649
15	594	593	595	597	601
25	517	512	514	529	545
35	425	417	430	462	492
45	322	316	343	411	476
55	213	215	269	341	385
65	104	107	143	172	198
75	54	54	54	59	61
85	13	11	10	9	9
90	0	1	1	1	1
95	39	62	61	57	56
105	164	278	281	268	266
115	313	454	530	541	537
125	449	590	687	744	761
135	569	677	792	849	872
145	668	733	856	908	922
155	746	772	854	912	932
165	800	805	833	863	872
175	828	826	830	829	827
180	829	829	829	829	829

FLUX

61
168
240
277
284
250
144
60
12
65
276
481
587
587
516
390
237
79



ZONAL LUMEN SUMMARY

ZONE	LUMENS	%LAMP	%FIXT
0- 30	469	8.2	10.0
0- 40	746	13.1	15.8
0- 60	1280	22.5	27.2
0- 90	1497	26.3	31.8
90-120	822	14.4	17.4
90-130	1409	24.7	29.9
90-150	2511	44.0	53.3
90-180	3217	56.4	68.2
0-180	4714	82.7	100.0

TOTAL LUMINAIRE EFFICIENCY: 82.7%
 CIE TYPE: SEMI-INDIRECT
 PLANE: 0-DEG 90-DEG
 SPACING CRITERIA: 1.1 1.2
 SHIELDING ANGLES: 30 21

Approved By: *MG*



LTL NUMBER: 10336

DATE: 09-20-2006

PREPARED FOR: PRECISION ARCHITECTURAL LIGHTING

COEFFICIENTS OF UTILIZATION - ZONAL CAVITY METHOD
EFFECTIVE FLOOR CAVITY REFLECTANCE 0.20

Table with 19 columns (RC, RW, 80, 70, 50, 30, 10, 0) and 11 rows (0-10) showing utilization coefficients.

PLANE: 0-DEG 90-DEG
LUMINOUS LENGTH: 43.875 2.625

LUMINANCE IN CANDELA PER SQUARE METER

Table with 4 columns (ANGLE IN DEG, AVERAGE 0-DEG, AVERAGE 45-DEG, AVERAGE 90-DEG) and 5 rows (0, 45, 55, 65, 75, 85) showing average luminance values.



LUMINAIRE TESTING LABORATORY, INC.

SUSTAINING MEMBER of the IESNA

905 Harrison Street · Allentown, PA 18103 · 610-770-1044 · Fax 610-770-8912 · www.LuminaireTesting.com

LTL NUMBER: 10336

DATE: 09-20-2006

PREPARED FOR: PRECISION ARCHITECTURAL LIGHTING

CANDELA DISTRIBUTION

ZONAL LUMEN SUMMARY

Table with 6 columns: Candela values (0.0, 22.5, 45.0, 67.5, 90.0) and Zonal Lumen Summary (0-5, 5-10, etc.).

THIS TEST WAS CONDUCTED USING RELATIVE PHOTOMETRY TECHNIQUES ACCORDING TO STANDARD IESNA PROCEDURES. THE USER MUST THEREFORE USE CAUTION IN THE FOLLOWING SITUATIONS: 1) THIS TEST WAS PERFORMED USING A SPECIFIC BALLAST/LAMP COMBINATION. EXTRAPOLATION OF THESE DATA FOR OTHER BALLAST/LAMP COMBINATIONS MAY PRODUCE ERRONEOUS RESULTS. 2) ACCORDING TO IESNA PROCEDURES, THE BALLAST(S) AND LAMP(S) ARE PRESUMED TO PRODUCE 100% OF RATED OUTPUT. AN APPROPRIATE BALLAST FACTOR MUST BE APPLIED TO THE LUMEN OUTPUT RATINGS AND LUMINOUS INTENSITY VALUES GIVEN. 3) THIS TEST WAS CONDUCTED IN A CONTROLLED LABORATORY ENVIRONMENT WHERE THE AMBIENT TEMPERATURE WAS HELD AT 25°C ±1°C. FIELD PERFORMANCE MAY DIFFER PARTICULARLY IN REGARDS TO CHANGE IN LUMINOUS OUTPUT AS A RESULT OF DIFFERENCE IN AMBIENT TEMPERATURE AND METHOD OF MOUNTING THE LUMINAIRE.