



LUMINAIRE TESTING LABORATORY, INC.

SUSTAINING
MEMBER
of the
IESNA

905 Harrison Street · Allentown, PA 18103 · 610-770-1044 · Fax 610-770-8912 · www.LuminaireTesting.com

LTL NUMBER: 10597

DATE: 11-07-2006

PREPARED FOR: PRECISION ARCHITECTURAL LIGHTING

CATALOG NUMBER: 0505P-01-R-4-OP/PRFD-X-120T5HO

LUMINAIRE: EXTRUDED ALUMINUM HOUSING, FORMED SPECULAR ALUMINUM REFLECTOR, FROSTED PATTERNED ACRYLIC LOWER ENCLOSURE, OPEN TOP.

LAMP: ONE 54 WATT HIGH OUTPUT T5 LINEAR FLUORESCENT LAMP RATED AT 4400 LUMENS.

LAMP CATALOG NUMBER: PHILIPS F54T5/841/HO/ALTO

BALLAST: ONE UNIVERSAL LIGHTING TECHNOLOGIES B254PUNV-D

MOUNTING: WALL

LUMEN TO CANDELA RATIO USED = 9.18

TOTAL INPUT WATTS = 59.0 AT 120.0 VOLTS

THE 0 DEGREE PLANE IS PERPENDICULAR TO THE LAMPS.

CANDELA DISTRIBUTION

FLUX

	0.0	22.5	45.0	67.5	90.0	112.5	135.0	157.5	180.0	
0	376	376	376	376	376	376	376	376	376	
5	398	396	392	383	375	365	360	354	353	36
15	435	427	411	385	359	334	320	309	305	103
25	443	433	408	367	327	293	273	259	254	156
35	414	402	375	328	279	242	220	205	200	184
45	340	331	308	266	219	185	167	157	154	181
55	243	236	223	192	156	130	118	116	115	151
65	146	140	136	119	97	81	76	76	75	104
75	65	62	62	56	47	40	37	37	36	52
85	13	11	12	12	11	9	7	6	6	12
90	2	2	2	1	1	0	0	0	0	
95	46	62	69	83	23	4	1	0	0	42
105	386	447	428	272	105	94	48	9	10	207
115	657	623	528	438	202	238	192	79	73	331
125	737	728	629	742	296	288	325	269	304	424
135	788	786	892	775	383	363	452	445	422	455
145	1029	1125	1138	715	458	452	431	512	538	438
155	1255	1144	913	726	518	521	509	484	487	329
165	882	842	795	667	560	568	564	556	558	188
175	679	650	632	598	583	590	600	593	596	59
180	584	584	584	584	584	584	584	584	584	

ZONAL LUMEN SUMMARY

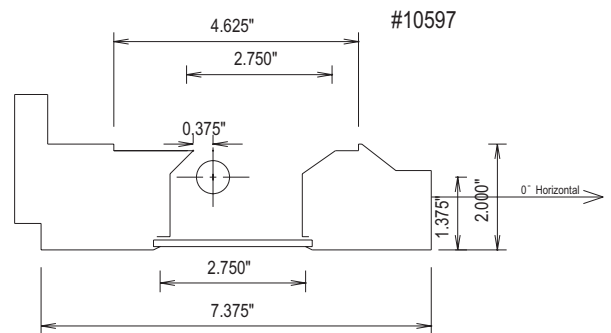
ZONE	LUMENS	%LAMP	%FIXT
0- 30	295	6.7	8.5
0- 40	479	10.9	13.9
0- 60	811	18.4	23.5
0- 90	978	22.2	28.4
90-120	580	13.2	16.8
90-130	1003	22.8	29.1
90-150	1897	43.1	55.0
90-180	2472	56.2	71.6
0-180	3451	78.4	100.0

TOTAL LUMINAIRE EFFICIENCY: 78.4%

CIE TYPE: SEMI-INDIRECT

PLANE: 0-DEG 90-DEG 180-DEG

SPACING CRITERIA: 1.6 1.2 0.9



Approved By: MG

THIS REPORT BASED ON LM-41 AND OTHER PERTINENT IESNA PROCEDURES.



LUMINAIRE TESTING LABORATORY, INC.

SUSTAINING
MEMBER
of the
IESNA

905 Harrison Street · Allentown, PA 18103 · 610-770-1044 · Fax 610-770-8912 · www.LuminaireTesting.com

LTL NUMBER: 10597

DATE: 11-07-2006

PREPARED FOR: PRECISION ARCHITECTURAL LIGHTING

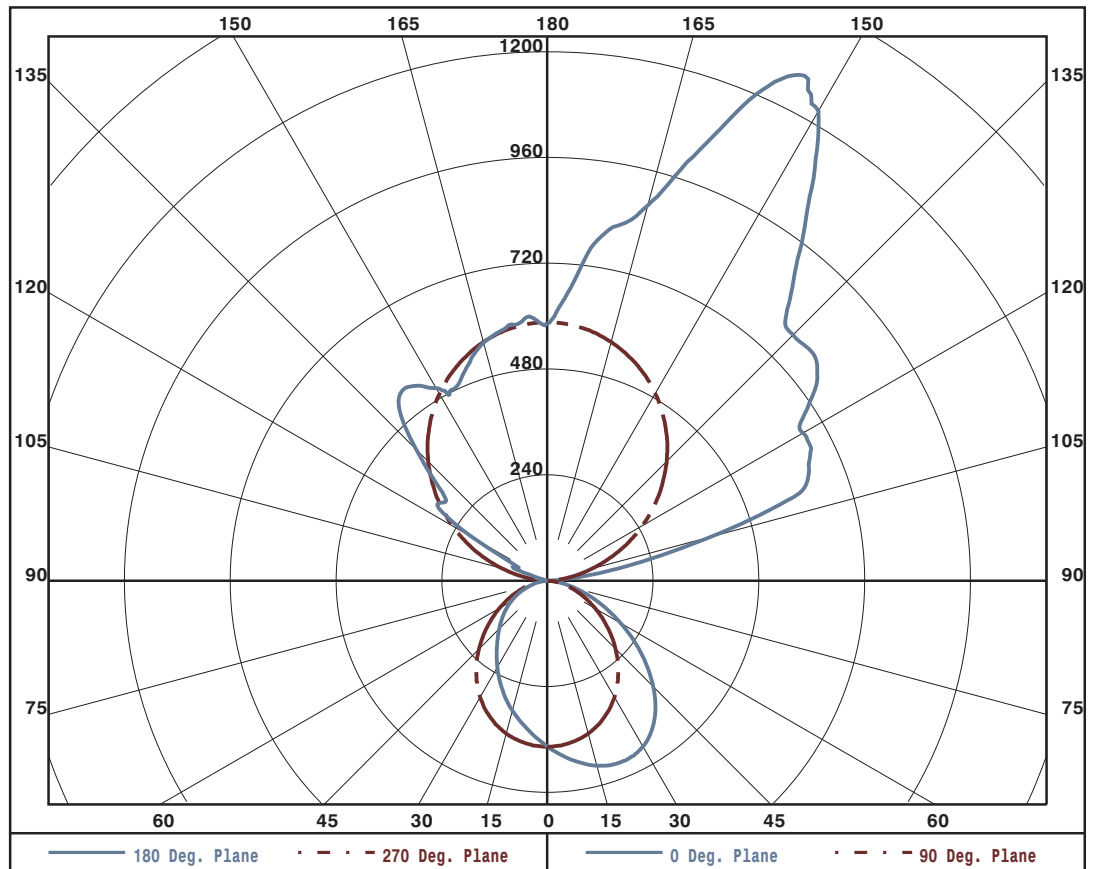
ZONAL LUMEN SUMMARY

0- 5	9.
5- 10	27.
10- 15	44.
15- 20	59.
20- 25	73.
25- 30	83.
30- 35	91.
35- 40	94.
40- 45	93.
45- 50	88.
50- 55	81.
55- 60	70.
60- 65	58.
65- 70	45.
70- 75	32.
75- 80	20.
80- 85	9.
85- 90	2.
90- 95	5.
95-100	38.
100-105	81.
105-110	125.
110-115	152.
115-120	179.
120-125	206.
125-130	218.
130-135	225.
135-140	230.
140-145	227.
145-150	211.
150-155	183.
155-160	146.
160-165	110.
165-170	77.
170-175	45.
175-180	14.

PLANE: 0-DEG 90-DEG
 LUMINOUS LENGTH: 2.750 43.875

LUMINANCE IN CANDELA PER SQUARE METER

ANGLE IN DEG	AVERAGE 0-DEG	AVERAGE 45-DEG	AVERAGE 90-DEG
0	4830.	4830.	4830.
45	6177.	5595.	3978.
55	5442.	4994.	3494.
65	4438.	4134.	2948.
75	3226.	3077.	2333.
85	1916.	1769.	1621.





LUMINAIRE TESTING LABORATORY, INC.

SUSTAINING MEMBER of the IESNA

905 Harrison Street · Allentown, PA 18103 · 610-770-1044 · Fax 610-770-8912 · www.LuminaireTesting.com

LTL NUMBER: 10597

DATE: 11-07-2006

PREPARED FOR: PRECISION ARCHITECTURAL LIGHTING

COEFFICIENTS OF UTILIZATION - ZONAL CAVITY METHOD

EFFECTIVE FLOOR CAVITY REFLECTANCE 0.20

Table with columns RC, RW, and rows for ceiling reflectance (80, 70, 50, 30, 10, 0) and room width (70, 50, 30, 10). Values range from 0 to 93.

NOTE: THE ZONAL CAVITY CALCULATION TECHNIQUE IS ACCURATE WHEN LUMINAIRES WITH SYMMETRIC CANDELA DISTRIBUTIONS ARE EMPLOYED AND WHEN THE LUMINAIRES ARE LOCATED SYMMETRICALLY THROUGHOUT THE ROOM. THIS UNIT HAS SPECIAL CHARACTERISTICS AND THEREFORE THESE COEFFICIENTS SHOULD BE USED WITH CAUTION.

THIS TEST WAS CONDUCTED USING RELATIVE PHOTOMETRY TECHNIQUES ACCORDING TO STANDARD IESNA PROCEDURES. THE USER MUST THEREFORE USE CAUTION IN THE FOLLOWING SITUATIONS: 1) THIS TEST WAS PERFORMED USING A SPECIFIC BALLAST/LAMP COMBINATION. EXTRAPOLATION OF THESE DATA FOR OTHER BALLAST/LAMP COMBINATIONS MAY PRODUCE ERRONEOUS RESULTS. 2) ACCORDING TO IESNA PROCEDURES, THE BALLAST(S) AND LAMP(S) ARE PRESUMED TO PRODUCE 100% OF RATED OUTPUT. AN APPROPRIATE BALLAST FACTOR MUST BE APPLIED TO THE LUMEN OUTPUT RATINGS AND LUMINOUS INTENSITY VALUES GIVEN. 3) THIS TEST WAS CONDUCTED IN A CONTROLLED LABORATORY ENVIRONMENT WHERE THE AMBIENT TEMPERATURE WAS HELD AT 25°C ±1°C. FIELD PERFORMANCE MAY DIFFER PARTICULARLY IN REGARDS TO CHANGE IN LUMINOUS OUTPUT AS A RESULT OF DIFFERENCE IN AMBIENT TEMPERATURE AND METHOD OF MOUNTING THE LUMINAIRE.