



LUMINAIRE TESTING LABORATORY, INC.

SUSTAINING
MEMBER
of the
IESNA

905 Harrison Street · Allentown, PA 18103 · 610-770-1044 · Fax 610-770-8912 · www.LuminaireTesting.com

LTL NUMBER: 10344

DATE: 09-22-2006

PREPARED FOR: PRECISION ARCHITECTURAL LIGHTING

CATALOG NUMBER: 0505P-01-C-4-OP/PB-W-120T8

LUMINAIRE: EXTRUDED ALUMINUM HOUSING, FORMED SPECULAR ALUMINUM REFLECTORS, 29 CELL, 3/4" DEEP, FORMED SEMI-SPECULAR ALUMINUM LOUVER, OPEN TOP.

LAMP: ONE 32 WATT T8 LINEAR FLUORESCENT LAMP RATED AT 2850 LUMENS.

LAMP CATALOG NUMBER: PHILIPS F32T8/TL830/ALTO

BALLAST: ONE UNIVERSAL LIGHTING TECHNOLOGIES B232IUNV-C

MOUNTING: WALL

LUMEN TO CANDELA RATIO USED = 9.18

TOTAL INPUT WATTS = 35.5 AT 120.0 VOLTS

THE 0 DEGREE PLANE IS PERPENDICULAR TO THE LAMPS.

CANDELA DISTRIBUTION										FLUX
	0.0	22.5	45.0	67.5	90.0	112.5	135.0	157.5	180.0	
0	262	262	262	262	262	262	262	262	262	
5	291	288	281	270	259	247	239	232	232	25
15	342	330	307	275	242	207	178	160	154	69
25	379	359	321	268	217	159	116	89	81	101
35	395	368	318	252	183	110	59	30	22	120
45	365	331	295	224	142	63	24	47	76	131
55	296	271	242	183	97	29	57	107	133	133
65	161	134	112	46	17	11	42	89	114	74
75	18	10	5	5	3	2	5	10	12	11
85	4	3	2	0	0	0	0	0	0	1
90	4	5	3	2	0	0	0	0	0	
95	36	50	56	57	15	2	0	0	0	29
105	231	253	238	164	64	121	35	8	9	132
115	387	375	324	251	126	160	221	160	153	234
125	456	444	397	317	186	215	272	351	360	288
135	506	492	449	347	240	266	290	326	350	275
145	529	515	464	362	286	295	332	343	351	238
155	512	488	438	372	324	317	353	370	378	179
165	446	431	408	375	350	343	348	361	365	107
175	391	385	381	371	366	360	359	358	358	35
180	366	366	366	366	366	366	366	366	366	

ZONAL LUMEN SUMMARY

ZONE	LUMENS	%LAMP	%FIXT
0- 30	195	6.8	8.9
0- 40	315	11.0	14.4
0- 60	578	20.3	26.5
0- 90	664	23.3	30.4
90-120	395	13.9	18.1
90-130	684	24.0	31.3
90-150	1196	42.0	54.8
90-180	1518	53.3	69.6
0-180	2183	76.6	100.0

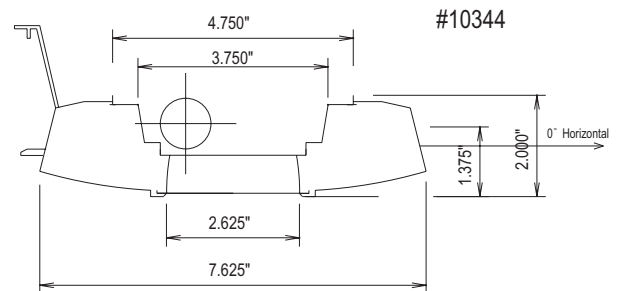
TOTAL LUMINAIRE EFFICIENCY: 76.6%

CIE TYPE: SEMI-INDIRECT

PLANE: 0-DEG 90-DEG 180-DEG

SPACING CRITERIA: 2.0 1.2 0.6

SHIELDING ANGLES: 18 30



Approved By: MG



LUMINAIRE TESTING LABORATORY, INC.

SUSTAINING
MEMBER
of the
IESNA

905 Harrison Street · Allentown, PA 18103 · 610-770-1044 · Fax 610-770-8912 · www.LuminaireTesting.com

LTL NUMBER: 10344

DATE: 09-22-2006

PREPARED FOR: PRECISION ARCHITECTURAL LIGHTING

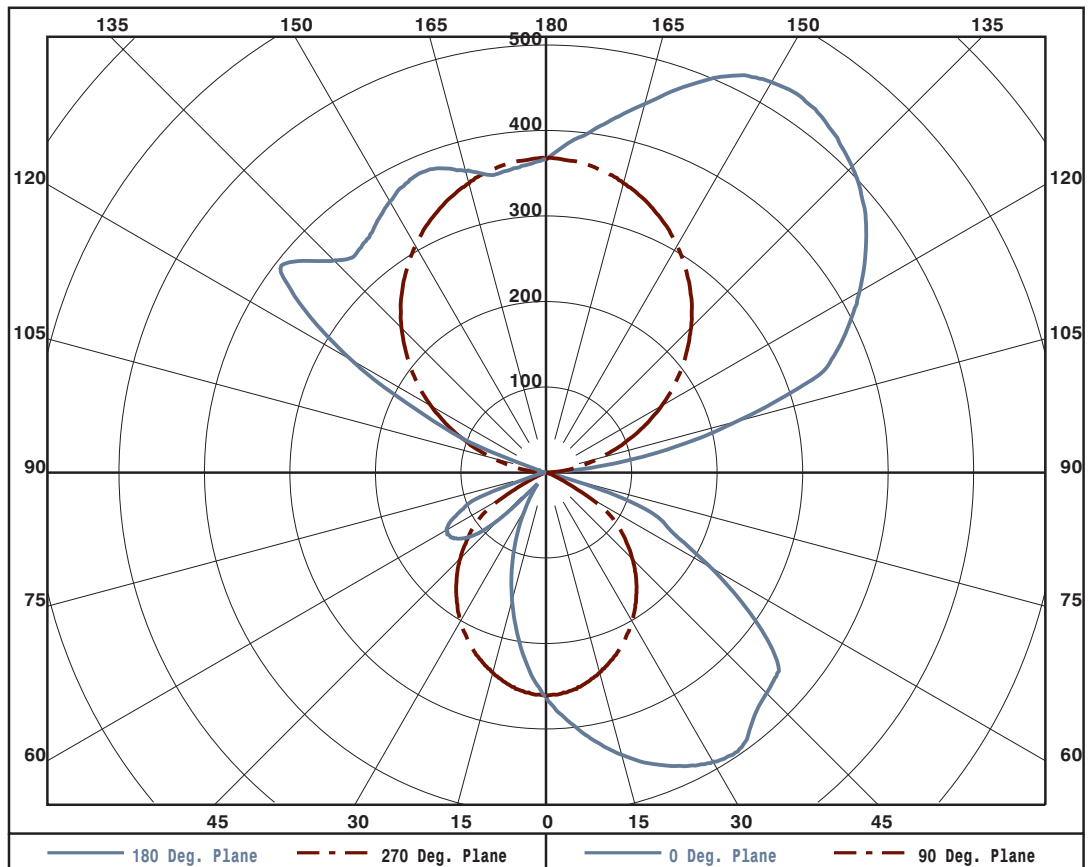
ZONAL LUMEN SUMMARY

0- 5	6.
5- 10	18.
10- 15	29.
15- 20	39.
20- 25	47.
25- 30	54.
30- 35	59.
35- 40	61.
40- 45	63.
45- 50	68.
50- 55	69.
55- 60	63.
60- 65	47.
65- 70	27.
70- 75	9.
75- 80	2.
80- 85	1.
85- 90	1.
90- 95	4.
95-100	25.
100-105	52.
105-110	80.
110-115	107.
115-120	128.
120-125	142.
125-130	146.
130-135	141.
135-140	134.
140-145	125.
145-150	113.
150-155	98.
155-160	81.
160-165	63.
165-170	44.
170-175	27.
175-180	9.

PLANE: 0-DEG 90-DEG
 LUMINOUS LENGTH: 2.625 43.875

LUMINANCE IN CANDELA PER SQUARE METER

ANGLE IN DEG	AVERAGE 0-DEG	AVERAGE 45-DEG	AVERAGE 90-DEG
0	3526.	3526.	3526.
45	6946.	5614.	2702.
55	6945.	5678.	2276.
65	5127.	3566.	541.
75	936.	260.	156.
85	618.	309.	0.





LUMINAIRE TESTING LABORATORY, INC.

SUSTAINING
MEMBER
of the
IESNA

905 Harrison Street · Allentown, PA 18103 · 610-770-1044 · Fax 610-770-8912 · www.LuminaireTesting.com

LTL NUMBER: 10344

DATE: 09-22-2006

PREPARED FOR: PRECISION ARCHITECTURAL LIGHTING

COEFFICIENTS OF UTILIZATION - ZONAL CAVITY METHOD

EFFECTIVE FLOOR CAVITY REFLECTANCE 0.20

RC RW	80				70				50			30			10			0
	70	50	30	10	70	50	30	10	50	30	10	50	30	10	50	30	10	0
0	78	78	78	78	70	70	70	70	55	55	55	42	42	42	29	29	29	23
1	72	69	66	64	65	62	60	58	49	48	46	37	36	36	27	26	26	21
2	66	61	56	53	59	55	51	48	44	41	39	33	32	30	24	23	22	18
3	60	54	48	44	54	48	44	40	39	36	33	30	28	26	21	20	19	16
4	55	47	42	37	49	43	38	34	34	31	28	26	24	22	19	18	17	13
5	50	42	36	32	45	38	33	29	30	27	24	23	21	19	17	15	14	11
6	46	37	31	27	41	34	29	25	27	23	21	21	18	16	15	14	12	10
7	42	33	28	23	38	30	25	22	24	21	18	19	16	14	14	12	11	9
8	39	30	24	20	35	27	22	19	22	18	16	17	14	12	12	11	9	7
9	36	27	21	18	32	25	20	16	20	16	14	15	13	11	11	9	8	6
10	34	25	19	16	30	22	18	14	18	14	12	14	11	10	10	8	7	6

NOTE: THE ZONAL CAVITY CALCULATION TECHNIQUE IS ACCURATE WHEN LUMINAIRES WITH SYMMETRIC CANDELA DISTRIBUTIONS ARE EMPLOYED AND WHEN THE LUMINAIRES ARE LOCATED SYMMETRICALLY THROUGHOUT THE ROOM. THIS UNIT HAS SPECIAL CHARACTERISTICS AND THEREFORE THESE COEFFICIENTS SHOULD BE USED WITH CAUTION.

THIS TEST WAS CONDUCTED USING RELATIVE PHOTOMETRY TECHNIQUES ACCORDING TO STANDARD IESNA PROCEDURES. THE USER MUST THEREFORE USE CAUTION IN THE FOLLOWING SITUATIONS: 1) THIS TEST WAS PERFORMED USING A SPECIFIC BALLAST/LAMP COMBINATION. EXTRAPOLATION OF THESE DATA FOR OTHER BALLAST/LAMP COMBINATIONS MAY PRODUCE ERRONEOUS RESULTS. 2) ACCORDING TO IESNA PROCEDURES, THE BALLAST(S) AND LAMP(S) ARE PRESUMED TO PRODUCE 100% OF RATED OUTPUT. AN APPROPRIATE BALLAST FACTOR MUST BE APPLIED TO THE LUMEN OUTPUT RATINGS AND LUMINOUS INTENSITY VALUES GIVEN. 3) THIS TEST WAS CONDUCTED IN A CONTROLLED LABORATORY ENVIRONMENT WHERE THE AMBIENT TEMPERATURE WAS HELD AT 25°C ±1°C. FIELD PERFORMANCE MAY DIFFER PARTICULARLY IN REGARDS TO CHANGE IN LUMINOUS OUTPUT AS A RESULT OF DIFFERENCE IN AMBIENT TEMPERATURE AND METHOD OF MOUNTING THE LUMINAIRE.