



**LUMINAIRE TESTING LABORATORY, INC.**

SUSTAINING  
MEMBER  
of the  
IESNA

905 Harrison Street · Allentown, PA 18103 · 610-770-1044 · Fax 610-770-8912 · www.LuminaireTesting.com

LTL NUMBER: 10341

DATE: 09-26-2006

PREPARED FOR: PRECISION ARCHITECTURAL LIGHTING

CATALOG NUMBER: 0505P-01-C-4-OP/PBW-W-120T5HO

LUMINAIRE: EXTRUDED ALUMINUM HOUSING, FORMED SPECULAR ALUMINUM REFLECTORS, 29 CELL, 3/4" DEEP, FORMED WHITE ENAMEL ALUMINUM LOUVER, OPEN TOP.

LAMP: ONE 54 WATT HIGH OUTPUT T5 LINEAR FLUORESCENT LAMP RATED AT 4400 LUMENS.

LAMP CATALOG NUMBER: PHILIPS F54T5/841/HO/ALTO

BALLAST: ONE UNIVERSAL LIGHTING TECHNOLOGIES B254PUNV-D

MOUNTING: WALL

LUMEN TO CANDELA RATIO USED = 9.18

TOTAL INPUT WATTS = 60.5 AT 120.0 VOLTS

THE 0 DEGREE PLANE IS PERPENDICULAR TO THE LAMPS.

CANDELA DISTRIBUTION										FLUX
	0.0	22.5	45.0	67.5	90.0	112.5	135.0	157.5	180.0	
0	689	689	689	689	689	689	689	689	689	
5	781	768	747	708	676	641	622	606	603	65
15	914	885	813	713	618	529	532	577	592	192
25	891	856	791	673	533	454	561	641	664	303
35	745	721	672	592	434	417	503	420	384	337
45	596	571	498	451	325	350	277	193	144	293
55	430	407	327	287	211	218	133	117	102	220
65	277	216	171	124	112	108	100	103	118	143
75	84	75	68	63	59	54	50	54	56	68
85	14	12	13	14	14	11	10	9	6	14
90	0	0	0	0	0	0	0	0	0	
95	23	27	32	76	34	0	0	0	0	29
105	311	363	379	258	127	55	5	2	2	175
115	611	588	483	394	233	156	90	45	28	285
125	627	588	533	525	324	262	195	146	138	332
135	624	643	703	546	403	362	299	256	253	353
145	802	825	753	537	468	450	398	359	356	341
155	811	750	640	540	518	517	486	454	454	262
165	626	606	578	556	550	551	553	537	539	160
175	571	572	572	567	568	565	569	568	567	54
180	569	569	569	569	569	569	569	569	569	

ZONAL LUMEN SUMMARY

ZONE	LUMENS	%LAMP	%FIXT
0- 30	559	12.7	15.4
0- 40	896	20.4	24.7
0- 60	1410	32.0	38.9
0- 90	1635	37.2	45.1
90-120	490	11.1	13.5
90-130	821	18.7	22.6
90-150	1515	34.4	41.8
90-180	1992	45.3	54.9
0-180	3627	82.4	100.0

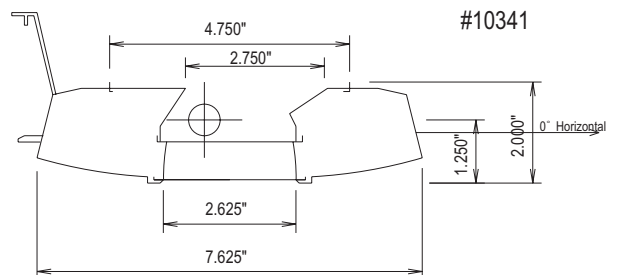
TOTAL LUMINAIRE EFFICIENCY: 82.4%

CIE TYPE: GENERAL DIFFUSE

PLANE: 0-DEG 90-DEG 180-DEG

SPACING CRITERIA: 1.6 1.1 1.2

SHIELDING ANGLES: 28 30



Approved By: MG

**THIS REPORT BASED ON LM-41 AND OTHER PERTINENT IESNA PROCEDURES.**



# LUMINAIRE TESTING LABORATORY, INC.

SUSTAINING  
MEMBER  
of the  
IESNA

905 Harrison Street · Allentown, PA 18103 · 610-770-1044 · Fax 610-770-8912 · [www.LuminaireTesting.com](http://www.LuminaireTesting.com)

LTL NUMBER: 10341  
PREPARED FOR: PRECISION ARCHITECTURAL LIGHTING

DATE: 09-26-2006

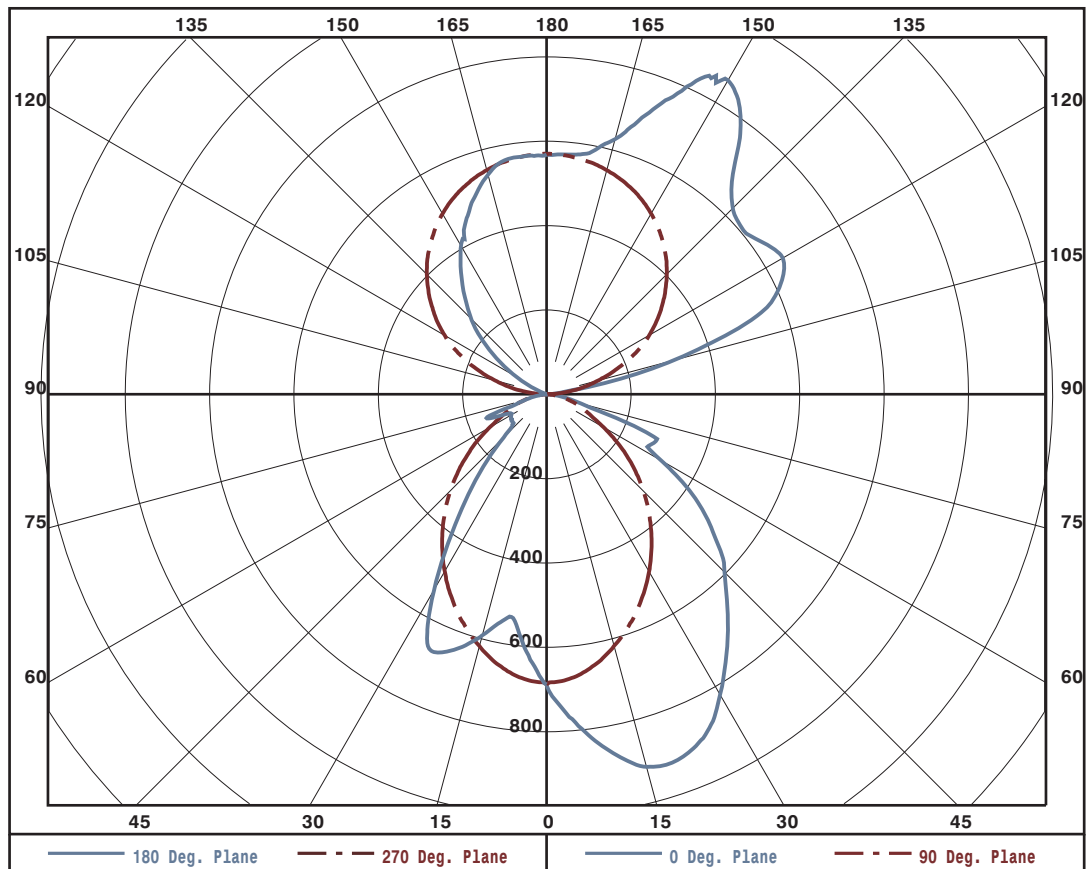
### ZONAL LUMEN SUMMARY

0- 5	16.
5- 10	48.
10- 15	80.
15- 20	112.
20- 25	141.
25- 30	162.
30- 35	170.
35- 40	167.
40- 45	155.
45- 50	138.
50- 55	121.
55- 60	100.
60- 65	77.
65- 70	66.
70- 75	42.
75- 80	26.
80- 85	13.
85- 90	2.
90- 95	2.
95-100	27.
100-105	69.
105-110	106.
110-115	133.
115-120	152.
120-125	162.
125-130	169.
130-135	175.
135-140	178.
140-145	176.
145-150	165.
150-155	144.
155-160	119.
160-165	93.
165-170	67.
170-175	41.
175-180	14.

PLANE: 0-DEG 90-DEG  
 LUMINOUS LENGTH: 2.625 43.875

LUMINANCE IN CANDELA PER SQUARE METER

ANGLE IN DEG	AVERAGE 0-DEG	AVERAGE 45-DEG	AVERAGE 90-DEG
0	9272.	9272.	9272.
45	11343.	9478.	6185.
55	10089.	7672.	4950.
65	8820.	5445.	3566.
75	4368.	3536.	3068.
85	2162.	2007.	2162.







LUMINAIRE TESTING LABORATORY, INC.

SUSTAINING  
MEMBER  
of the  
IESNA

905 Harrison Street · Allentown, PA 18103 · 610-770-1044 · Fax 610-770-8912 · www.LuminaireTesting.com

LTL NUMBER: 10341

DATE: 09-26-2006

PREPARED FOR: PRECISION ARCHITECTURAL LIGHTING

COEFFICIENTS OF UTILIZATION - ZONAL CAVITY METHOD

EFFECTIVE FLOOR CAVITY REFLECTANCE 0.20

RC	80				70				50			30			10			0
RW	70	50	30	10	70	50	30	10	50	30	10	50	30	10	50	30	10	0
0	87	87	87	87	80	80	80	80	66	66	66	54	54	54	43	43	43	37
1	80	77	74	71	74	71	68	66	59	57	56	49	47	46	39	38	37	33
2	74	68	63	60	68	63	59	55	53	50	47	43	41	40	35	34	32	29
3	68	60	55	50	62	56	51	47	47	44	41	39	37	34	32	30	28	25
4	62	54	48	43	57	50	44	40	42	38	35	35	32	30	28	27	25	22
5	57	48	42	37	52	44	39	35	38	33	30	31	28	26	26	23	22	19
6	53	43	37	32	48	40	34	30	34	30	26	28	25	23	23	21	19	17
7	49	39	32	28	44	36	30	26	31	26	23	26	23	20	21	19	17	15
8	45	35	29	24	41	32	27	23	28	23	20	23	20	18	19	17	15	13
9	41	32	25	21	38	29	24	20	25	21	18	21	18	15	17	15	13	11
10	38	29	23	19	35	27	21	18	23	19	16	19	16	14	16	13	12	10

NOTE: THE ZONAL CAVITY CALCULATION TECHNIQUE IS ACCURATE WHEN LUMINAIRES WITH SYMMETRIC CANDELA DISTRIBUTIONS ARE EMPLOYED AND WHEN THE LUMINAIRES ARE LOCATED SYMMETRICALLY THROUGHOUT THE ROOM. THIS UNIT HAS SPECIAL CHARACTERISTICS AND THEREFORE THESE COEFFICIENTS SHOULD BE USED WITH CAUTION.

THIS TEST WAS CONDUCTED USING RELATIVE PHOTOMETRY TECHNIQUES ACCORDING TO STANDARD IESNA PROCEDURES. THE USER MUST THEREFORE USE CAUTION IN THE FOLLOWING SITUATIONS: 1) THIS TEST WAS PERFORMED USING A SPECIFIC BALLAST/LAMP COMBINATION. EXTRAPOLATION OF THESE DATA FOR OTHER BALLAST/LAMP COMBINATIONS MAY PRODUCE ERRONEOUS RESULTS. 2) ACCORDING TO IESNA PROCEDURES, THE BALLAST(S) AND LAMP(S) ARE PRESUMED TO PRODUCE 100% OF RATED OUTPUT. AN APPROPRIATE BALLAST FACTOR MUST BE APPLIED TO THE LUMEN OUTPUT RATINGS AND LUMINOUS INTENSITY VALUES GIVEN. 3) THIS TEST WAS CONDUCTED IN A CONTROLLED LABORATORY ENVIRONMENT WHERE THE AMBIENT TEMPERATURE WAS HELD AT 25°C ±1°C. FIELD PERFORMANCE MAY DIFFER PARTICULARLY IN REGARDS TO CHANGE IN LUMINOUS OUTPUT AS A RESULT OF DIFFERENCE IN AMBIENT TEMPERATURE AND METHOD OF MOUNTING THE LUMINAIRE.