

Delgada Series™

Shown with 4 1/2" Extended End and Round Perf Lens



Shown with Flat End and Semi-Specular Parabolic Baffle

DCP02

8 1/8" x 2" Indirect/Direct
(T8 Lamps)

S P E C I F I C A T I O N S

Housing

Two-piece .080" thick extruded aluminum. Standard lengths are 4' and 8'. Provisions may be made for continuous rows of any length.

End Caps

- (FE) Flat End – .100" thick die-cast aluminum finished to match fixture housing and secured with no visible fasteners
- (XE) 4 1/2" Extended End – .100" thick die-cast aluminum finished to match fixture housing and secured with no visible fasteners

Finish

Standard and premium finishes are baked powder coat electrostatically applied (2.0 mil minimum thickness) to assure aesthetics and durability.

Indirect Optical Controls

- (OP) Open Top
- (DC) Clear Extruded 100% Acrylic Dust Cover

Direct Optical Controls

- (PB) 3/4" deep semi-specular aluminum parabolic baffle with blades on 1 1/2" centers
- (PBW) 3/4" deep white aluminum parabolic baffle with blades on 1 1/2" centers
- (RDPL) .118" thick acrylic optical panel with .080" round openings on .110 centers (50% open area)

- (SQPL) .118" thick acrylic optical panel with .080" square openings on .110 centers (50% open area)
- (MPL) .115" thick acrylic compression molded micro-prismatic lens

Reflectors

Die-formed from .020" thick high reflectance specular aluminum.

Ballast

Standard ballasts for T8 lamps are UL/CUL listed, Class P, HPF electronic, universal 120/277volt, instant start with <10% THD.

Circuitry

All fixtures are factory pre-wired for a single circuit. Provision for multiple switching/circuiting is optional.

Wiring

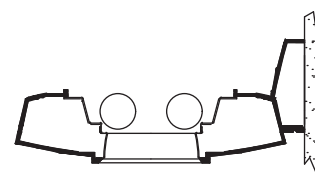
All fixtures intended for continuous rows are provided with factory installed quick-connect wiring.

Controls

Contact factory for control by Occupancy Sensors, Photo Controls and Daylight Harvesting.

Certification

All fixtures are UL/CUL listed for use in "Dry Applications". "Damp Location" is optional.



Standard Lengths:		Mounting		Voltage		Lamp Type		Options	
4' and 8'		W = Wall		120		T8		SS-L/R (Left/Right)	
Series		Direct Optical Controls		Standard Finish		Voltage		Options	
DCP02		Indirect Optical Controls		Premium Finishes		277		Dim	
End Caps		Direct Optical Controls		F016 Gloss White		347		FS	
FE Flat End		PB Semi-Specular Parabolic Baffle		F02 Ivory				Fused Ballasts	
XE 4 1/2" Extended End		PBW White Parabolic Baffle		F03 Stonewash				GTD	
		RDPL Round Perf Lens		F04 Camel				Generator Transfer Device	
		SQPL Square Perf Lens		F05 Gray Day				AO	
		MPL Micro-Prismatic Lens		F06 Pebble Beach				Translucent White Acrylic Overlay above Baffle	
				F07 Steel				DS	
				F08 Gray Seal				Integral Mount	
				F09 Mocha				Daylight Sensor	
				F10 Bronzed					
				F11 Black					
				F12 Ultrasonic Clear					



DCP02

Indirect/Direct - T8 Lamps

DCP02-OP/PB-T8

Open Up / Semi-Specular Baffle Down

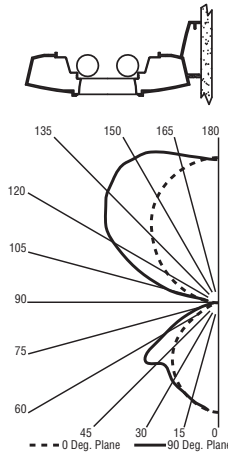
Catalog Number: DCP02-X-4-X-OP/PB-F01M-120-T8

Report Number: LTL#10335.ies

Luminaire Description: Extruded Aluminum Housing with Specular Aluminum Reflector and Semi-Specular Aluminum Baffle Open Top

Lamps: Two Philips F32T8/841/ALTO
Rated at 2850 Lumens Each

Total Luminaire Efficiency = 79.8%
67% Up 33% Down



DCP02-OP/SQPL-T8

Open Up / Frosted Patterned Acrylic Lens Down

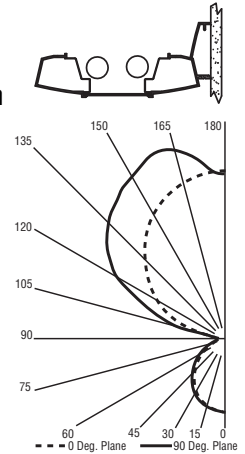
Catalog Number: DCP02-X-4-X-OP/SQPL-F01M-120-T8

Report Number: LTL#10339.ies

Luminaire Description: Extruded Aluminum Housing with Specular Aluminum Reflector and Frosted Patterned Acrylic Enclosure Open Top

Lamps: Two Philips F32T8/841/ALTO
Rated at 2850 Lumens Each

Total Luminaire Efficiency = 79.8%
78% Up 22% Down



DCP02-OP/MPL-T8

Open Up / Micro-Prismatic Lens Down

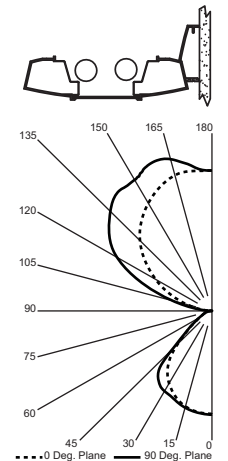
Catalog Number: DCP02-X-4-X-OP/MPL-F01M-120-T8

Report Number: LTL#22465.ies

Luminaire Description: Extruded Aluminum Housing with Specular Aluminum Reflector and Micro-Prismatic Acrylic Lens Open Top

Lamps: Two Philips F32T8/841/ALTO
Rated at 2850 Lumens Each

Total Luminaire Efficiency = 87.9%
71% Up 29% Down



Visit www.pal-lighting.com for complete photometric reports.

